

WAAS CH <b>69527</b> <b>W01A</b>	APP CRS <b>007°</b>	Rwy Ldg TDZE Apt Elev	<b>4151</b> <b>2694</b> <b>2694</b>
--	------------------------	-----------------------------	---

# RNAV (GPS) RWY 1

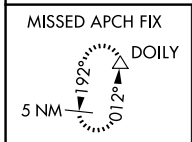
TWIN COUNTY (HLX)

RNP APCH - GPS.

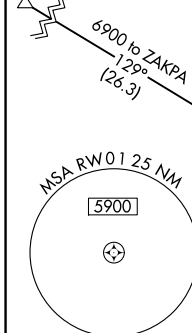
Baro-VNAV NA when using PSK altimeter setting. For uncompensated Baro-VNAV systems, LNAV/VNAV NA below -20°C or above 54°C. Rwy 1 helicopter visibility reduction below ¾ SM NA. VDP NA with PSK altimeter setting. When local altimeter setting not received, use PSK altimeter setting: increase LPV DA to 3103 feet and all visibilities ½ SM; increase LNAV/VNAV DA to 3154 feet and all visibilities ½ SM; increase all MDAs 140 feet and LNAV visibility Cats C and D ½ SM and Circling Cat C ¼ SM.

MISSED APPROACH: Climb to 3200 then climbing right turn to 5100 direct DOILY and hold, continue climb-in-hold to 5100.

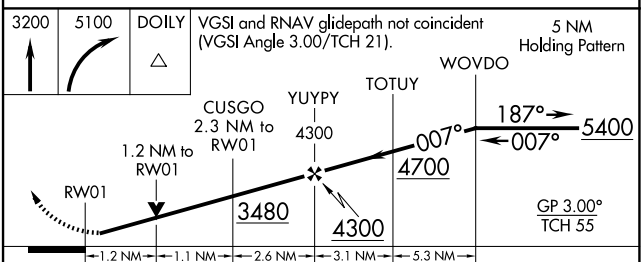
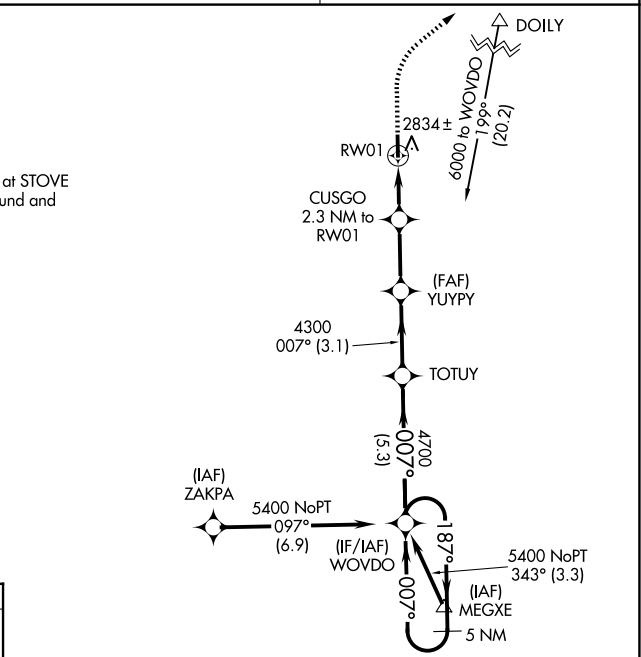
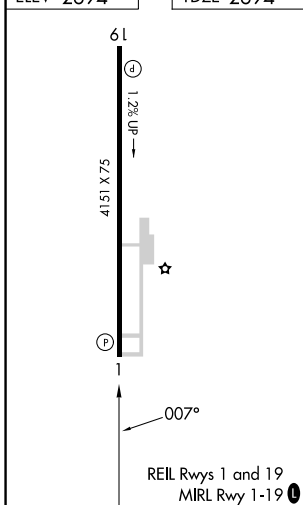
AWOS-3 <b>118.375</b>	ROANOKE APP CON <b>126.0 339.8</b>	UNICOM <b>122.8 (CTAF)</b>
--------------------------	---------------------------------------	-------------------------------



STOVE Procedure NA for arrivals at STOVE on V16-136 southwest bound and on V133 northbound.



ELEV 2694	TDZE 2694
-----------	-----------



CATEGORY	A	B	C	D
LPV DA		2965-1	271 (300-1)	
LNAV/VNAV DA		3016-1	322 (400-1)	
LNAV MDA	3100-1	406 (500-1)	3100-1½	406 (500-1½)
CIRCLING	3200-1	506 (600-1)	3200-1½	3680-3 986 (1000-3)