

WAAS CH <b>82643</b> <b>W14A</b>	APP CRS <b>138°</b>	Rwy Ldg TDZE Apt Elev	<b>5201</b> <b>1393</b> <b>1396</b>
--	------------------------	-----------------------------	---

# RNAV (GPS) RWY 14

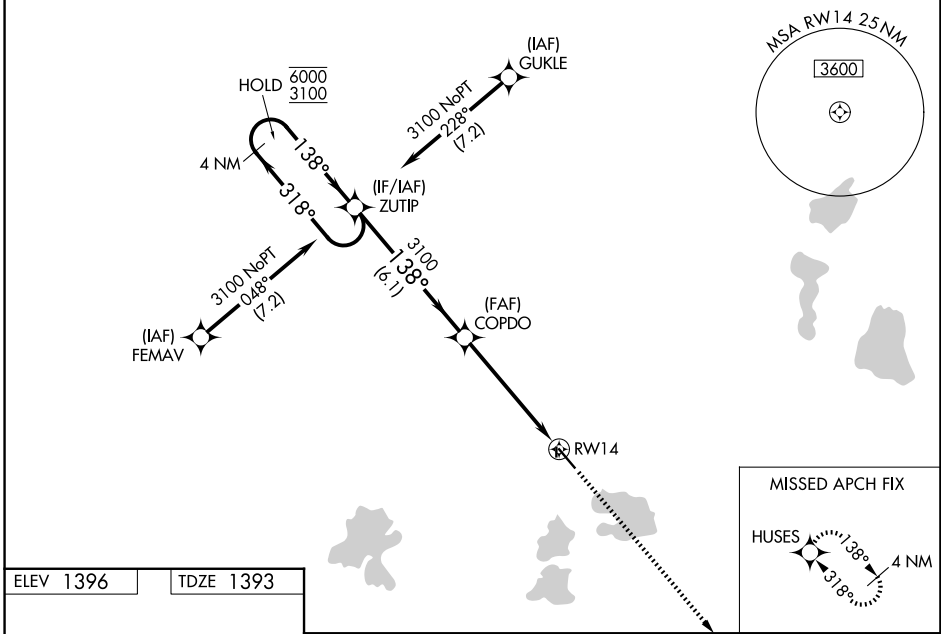
DETROIT LAKES/WETHING FLD (DTL)

RNP APCH.

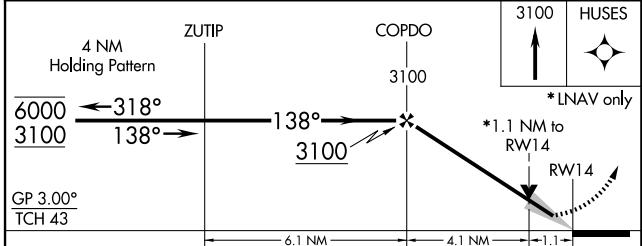
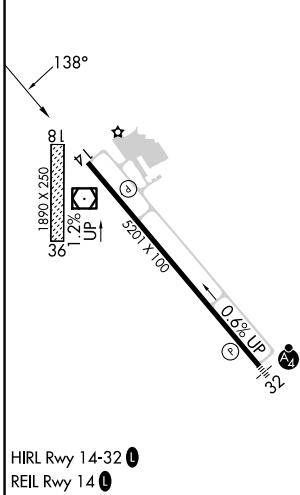
**⚠** Circling NA to Rwy 18 and 36. Baro-VNAV and VDP NA when using Park Rapids altimeter setting. For uncompensated Baro-VNAV systems, LNAV/VNAV NA below -17°C or above 54°C. When local altimeter setting not received, use Park Rapids altimeter setting: increase DA to 1728 feet and all visibilities ¼ SM, increase all MDA 100 feet and visibility Cats C and D ¼ SM.

MISSED APPROACH: Climb to 3100 direct HUSES and hold.

AWOS-3PT <b>119.075</b>	MINNEAPOLIS CENTER <b>126.1 269.2</b>	UNICOM <b>122.8 (CTAF) 0</b>
----------------------------	--	---------------------------------



ELEV 1396	TDZE 1393
-----------	-----------



CATEGORY	A	B	C	D
LPV DA		1643-1	250 (300-1)	
LNAV/VNAV DA		1643-1	250 (300-1)	
LNAV MDA	1780-1	387 (400-1)	1780-1½	387 (400-1½)
CIRCLING	1820-1 424 (500-1)	1860-1 464 (500-1)	2080-2 684 (700-2)	2140-2½ 744 (800-2½)