

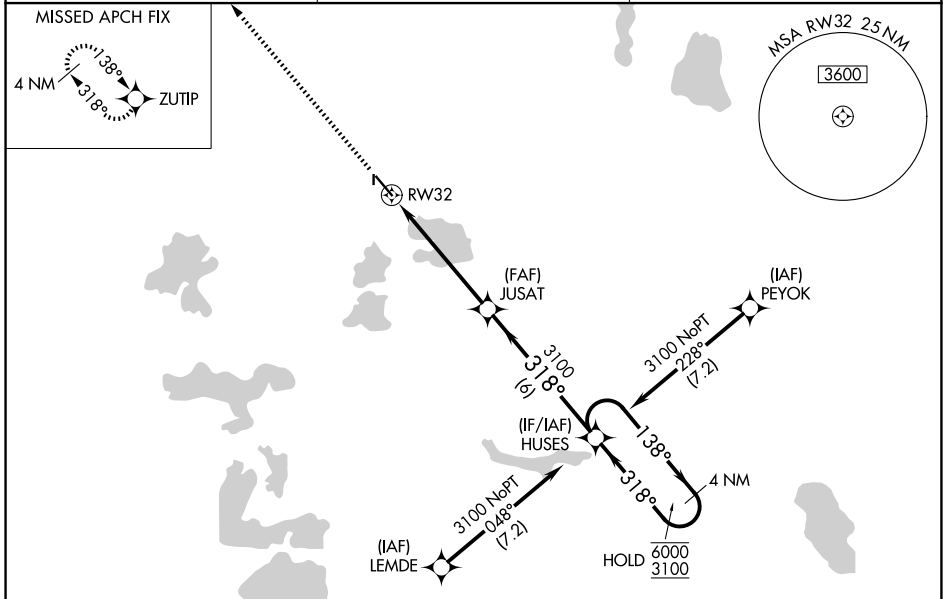
WAAS CH 86704 W32A	APP CRS 318°	Rwy Ldg TDZE Apt Elev	5201 1372 1396
----------------------------------------	------------------------	-----------------------------	-------------------------------------------

RNAV (GPS) RWY 32

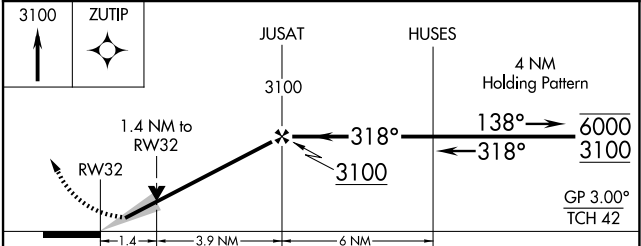
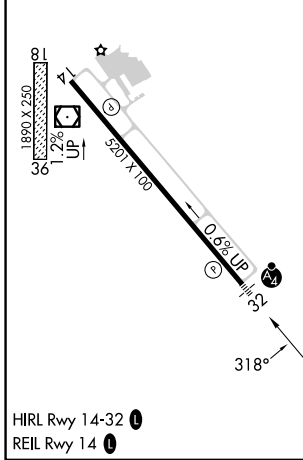
DETROIT LAKES/WETHING FLD (DTL)

RNP APCH-GPS.	MALSF	MISSED APPROACH: Climb to 3100 direct ZUTIP and hold.
<p>⚠ Circling NA to Rwy 18 and 36. Inop table does not apply to LPV.</p> <p>⚠ For uncompensated Baro-VNAV systems, LNAV/VNAV NA below -17°C or above 54°C. For inop ALS, increase LNAV/VNAV all Cats visibility to ½ SM.</p>		

AWOS-3PT 119.075	MINNEAPOLIS CENTER 126.1 269.2	UNICOM 122.8 (CTAF)
----------------------------	------------------------------------------	-------------------------------



ELEV 1396	TDZE 1372
-----------	-----------



CATEGORY	A	B	C	D
LPV DA	1622- ³ / ₄ 250 (300- ³ / ₄)			
LNAV/VNAV DA	1656- ³ / ₄ 284 (300- ³ / ₄)			
LNAV MDA	1860- ³ / ₄	488 (500- ³ / ₄)	1860-1 ¹ / ₈	488 (500-1 ¹ / ₈)
CIRCLING	1860-1	464 (500-1)	2080-2 684 (700-2)	2140-2 ¹ / ₂ 744 (800-2 ¹ / ₂)

NC-1, 16 APR 2026 to 14 MAY 2026

NC-1, 16 APR 2026 to 14 MAY 2026