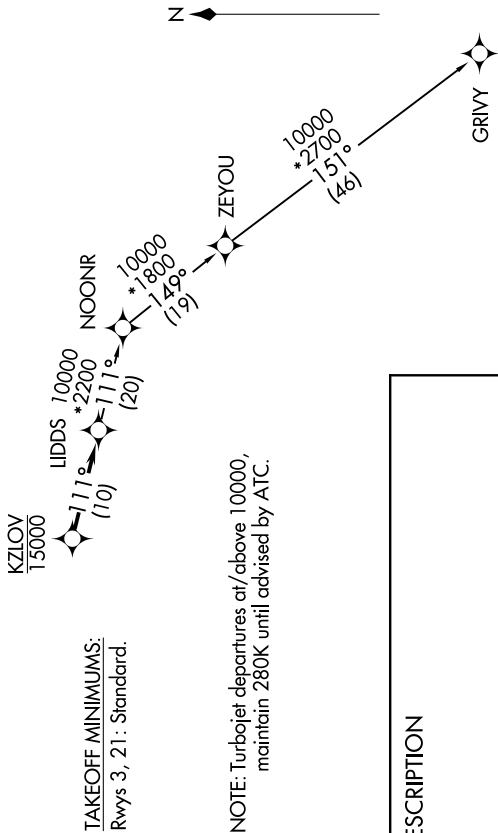
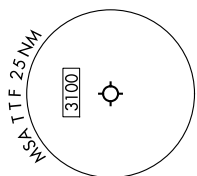


EC-1, 16 APR 2026 to 14 MAY 2026

DETROIT DEP CON
134.3 284.0
AWOS-3P
119,075
CTAF
122.7

RNAV - DME/DME/IRU or GPS.
RADAR required
RADAR required for non-GPS equipped aircraft.

**TOP ALTITUDE:
ASSIGNED BY ATC**



TAKEOFF MINIMUMS:
Rwys 3, 21: Standard.

NOTE: Turbojet departures at/above 10000,
maintain 280K until advised by ATC.

DEPARTURE ROUTE DESCRIPTION

TAKEOFF RUNWAY 3: Climb on heading 027° or as assigned by ATC, thence....
TAKEOFF RUNWAY 21: Climb on heading 208° or as assigned by ATC, thence....
....for RADAR vectors to cross KZLOV at or below 15000, then on track 111° to LIDDS,
then on (transition). Maintain ATC assigned altitude, expect filed altitude 10 minutes
after departure.

GRIVY TRANSITION (LIDDS4.GRIVY):

NOTE: Chart not to scale.

EC-1, 16 APR 2026 to 14 MAY 2026