

WAAS CH 69520 W28A	APP CRS 276°	Rwy Ldg TDZE Apt Elev	5002 1797 1803
--	------------------------	-----------------------------	---

RNAV (GPS) RWY 28

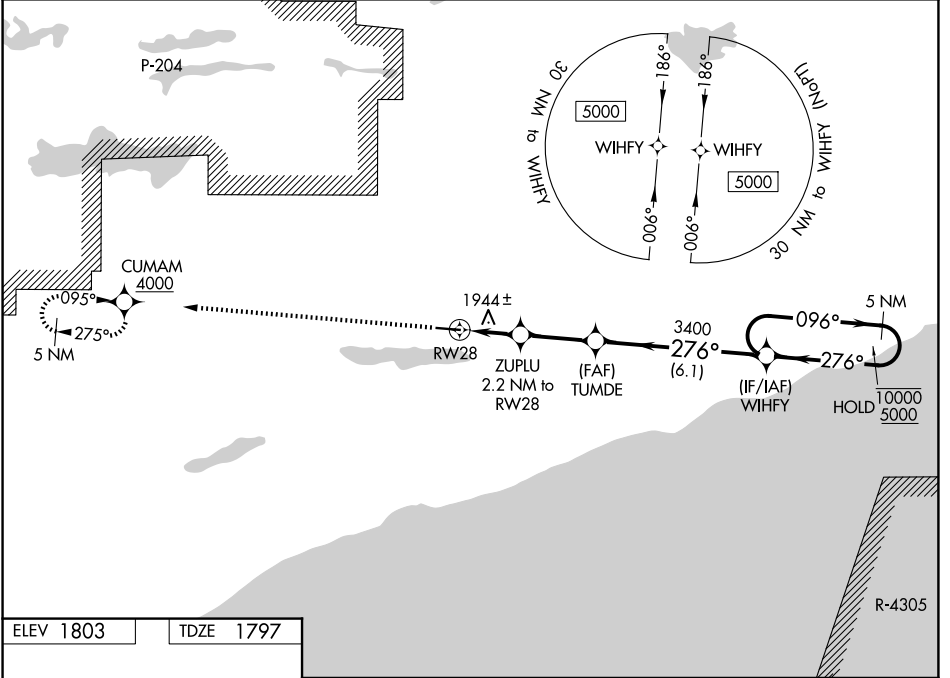
GRAND MARAIS/COOK COUNTY (CKC)

RNP APCH.

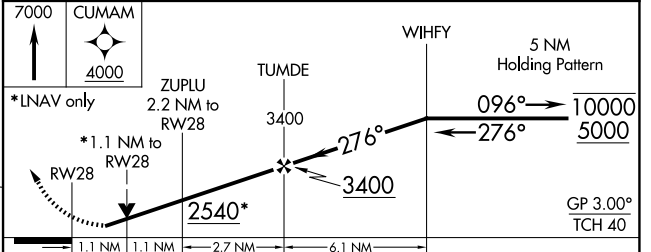
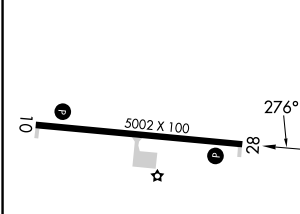
⚠ Circling Rwy 10 NA at night. Rwy 28 helicopter visibility reduction below 3/4 SM NA. For uncompensated Baro-VNAV systems, LNAV/VNAV NA below -18°C or above 54°C.

MISSED APPROACH: Climb to 7000 direct CUMAM, cross CUMAM at or above 4000 and hold, continue climb-in-hold to 7000.

AWOS-3 119.925	MINNEAPOLIS CENTER 127.9 281.45	UNICOM 122.8 (CTAF) 0
--------------------------	---	---------------------------------



ELEV 1803	TDZE 1797
-----------	-----------



CATEGORY	A	B	C	D
LPV DA	2047-1		250 (300-1)	
LNAV/VNAV DA	2219-1¼		422 (500-1¼)	
LNAV MDA	2200-1	403 (400-1)	2200-1½	403 (400-1½)
CIRCLING	2300-1	497 (500-1)	2380-1½ 577 (600-1½)	2640-2¾ 837 (900-2¾)

NC-1, 16 APR 2026 to 14 MAY 2026

NC-1, 16 APR 2026 to 14 MAY 2026