

WAAS CH <b>53742</b> <b>W17A</b>	APP CRS <b>177°</b>	Rwy Ldg TDZE Apt Elev	<b>3598</b> <b>1411</b> <b>1411</b>
--	------------------------	-----------------------------	---

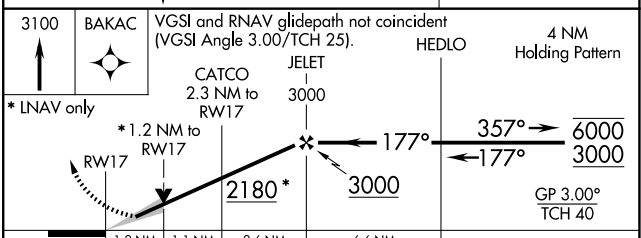
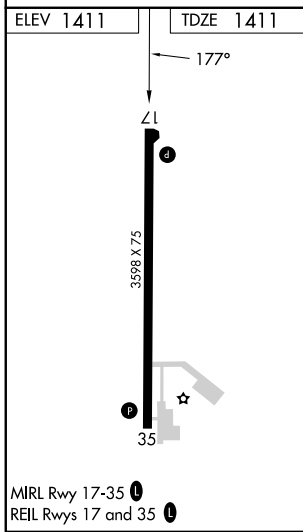
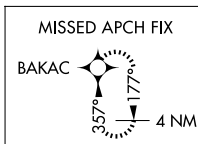
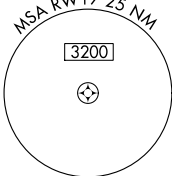
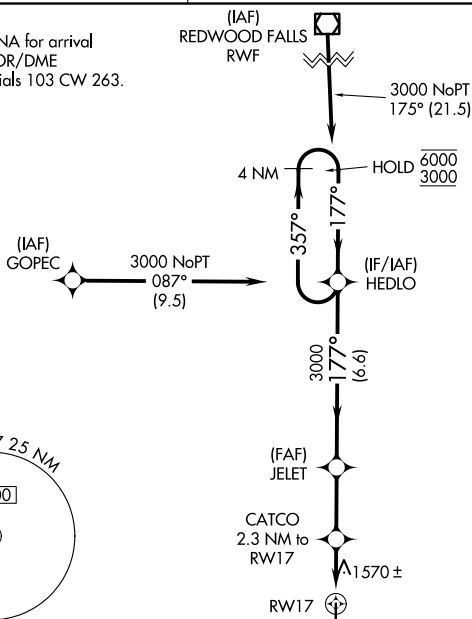
# RNAV (GPS) RWY 17

WINDOM MUNI (MWM)

RNP APCH.	MISSED APPROACH: Climb to 3100 direct BAKAC and hold.
<p>▼ For uncompensated Baro-VNAV systems, LNAV/VNAV NA</p> <p>▲ below -17°C or above 54°C.</p>	

AWOS-3PT <b>119.325</b>	MINNEAPOLIS CENTER <b>127.1 290.2</b>	CTAF <b>122.9</b>
----------------------------	--	----------------------

Procedure NA for arrival on RWF VOR/DME airway radials 103 CW 263.



CATEGORY	A	B	C	D
LPV DA	1661-1	250 (300-1)		NA
LNAV/VNAV DA	1858-1 <sup>3</sup> / <sub>8</sub>	447 (500-1 <sup>3</sup> / <sub>8</sub> )		NA
LNAV MDA	1820-1	409 (500-1)	1820-1 <sup>1</sup> / <sub>8</sub> 409 (500-1 <sup>1</sup> / <sub>8</sub> )	NA
CIRCLING	1880-1 469 (500-1)	1900-1 489 (500-1)	1920-1 <sup>1</sup> / <sub>2</sub> 509 (600-1 <sup>1</sup> / <sub>2</sub> )	NA

NC-1, 16 APR 2026 to 14 MAY 2026

NC-1, 16 APR 2026 to 14 MAY 2026