

VORTAC BNA 114.1 Chan 88	APP CRS 045°	Rwy Ldg TDZE Apt Elev 583	N/A N/A 583
--	------------------------	--	--

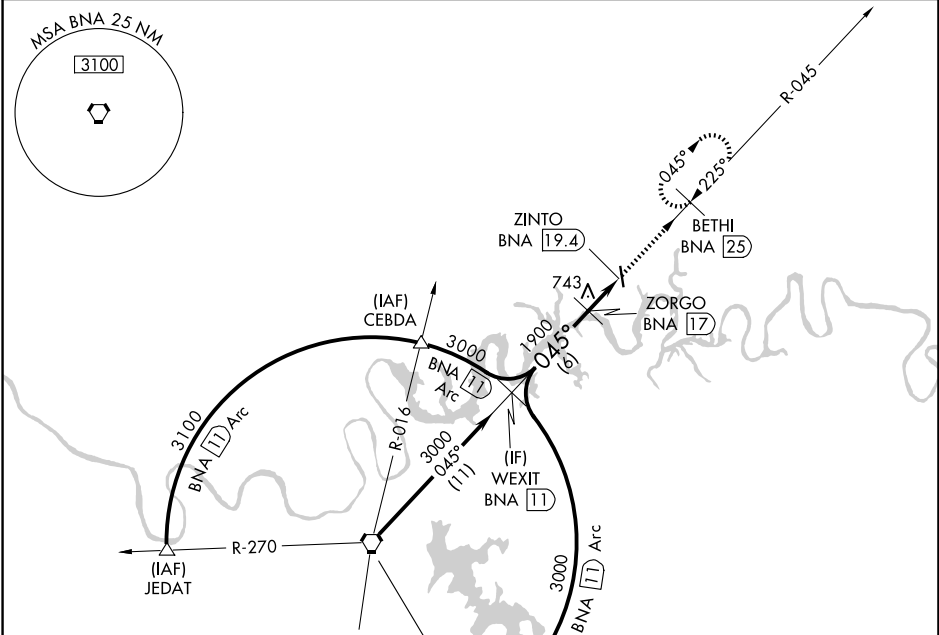
VOR-A
MUSIC CITY EXEC (X.N.X)

DME required.

▼ When local altimeter setting not received, use Nashville Intl altimeter setting and increase all MDA 60 feet, increase Cat C/D visibility 1/4 mile.

▲ MISSED APPROACH: Climb to 3000 on BNA VORTAC R-045 to BETHI/25 DME and hold, continue climb-in-hold to 3000.

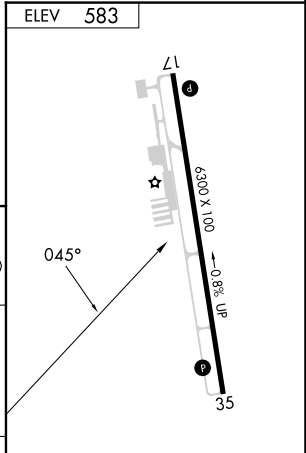
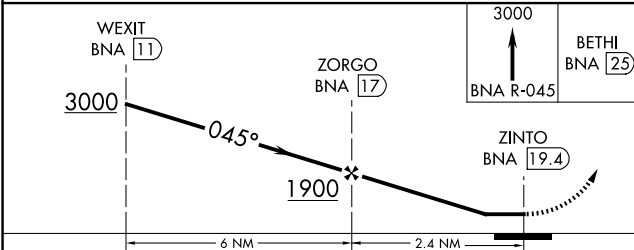
AWOS-3 132.725	NASHVILLE APP CON 118.4 360.7	GCO 135.075	UNICOM 123.05 (CTAF) 0
--------------------------	---	-----------------------	---



Procedure NA for arrival on BNA VORTAC airway radials 016 CW 072.

ELEV 583

IAF NASHVILLE
114.1 BNA
Chan 88



CATEGORY	A	B	C	D
CIRCLING	1100-1 517 (600-1)	1120-1 537 (600-1)	1240-1 3/4 657 (700-1 3/4)	1280-2 1/4 697 (700-2 1/4)

MIRL Rwy 17-35 **0**
REIL Rwy 17 and 35 **0**

SE-1, 16 APR 2026 to 14 MAY 2026

SE-1, 16 APR 2026 to 14 MAY 2026