

RNAV (GPS) RWY 18

NACOGDOCHES A L MANGHAM JR RGNL (OCH)

APP CRS	Rwy Ldg	5001
177°	TDZE	343
	Apt Elev	343

RNP APCH-GPS.

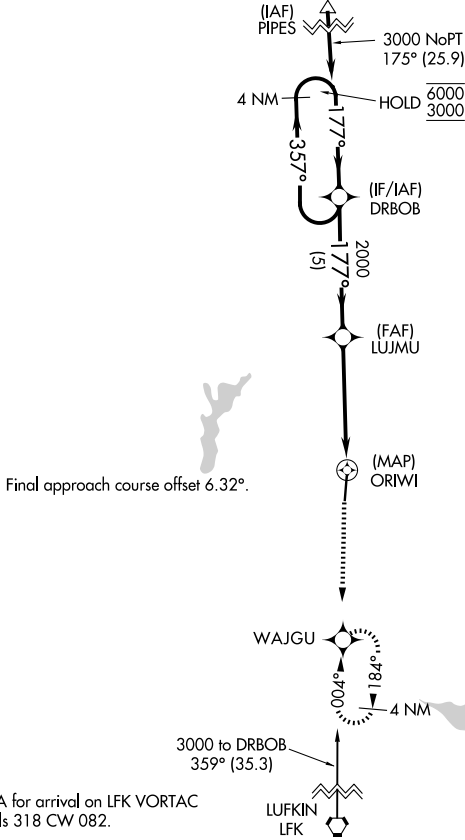
⚠ Rwy 18 helicopter visibility reduction below 1 SM NA. When local altimeter setting not received, use LFK altimeter setting: Increase all MDAs 60 feet and visibility Cat C ¼ SM.

MISSED APPROACH: Climb to 2400 direct WAJGU and hold, continue climb-in-hold.

AWOS-3PT
135.625

HOUSTON CENTER
125.175 285.575

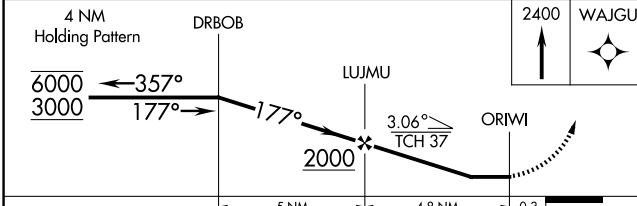
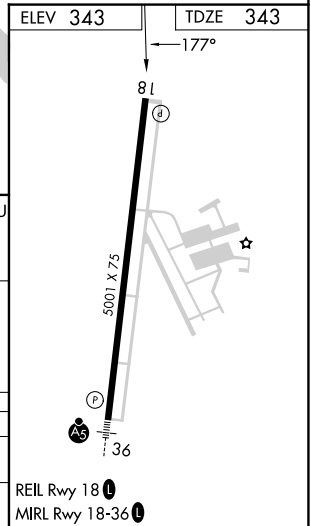
UNICOM
123.0(CTAF) 0



SC-5, 16 APR 2026 to 14 MAY 2026

SC-5, 16 APR 2026 to 14 MAY 2026

Procedure NA for arrival on LFK VORTAC airway radials 318 CW 082.



CATEGORY	A	B	C	D
LNVA MDA	980-1	637 (700-1)	980-1¾ 637 (700-1¾)	NA
CIRCLING	980-1	637 (700-1)	1080-2 737 (800-2)	NA

RNAV (GPS) RWY 18