

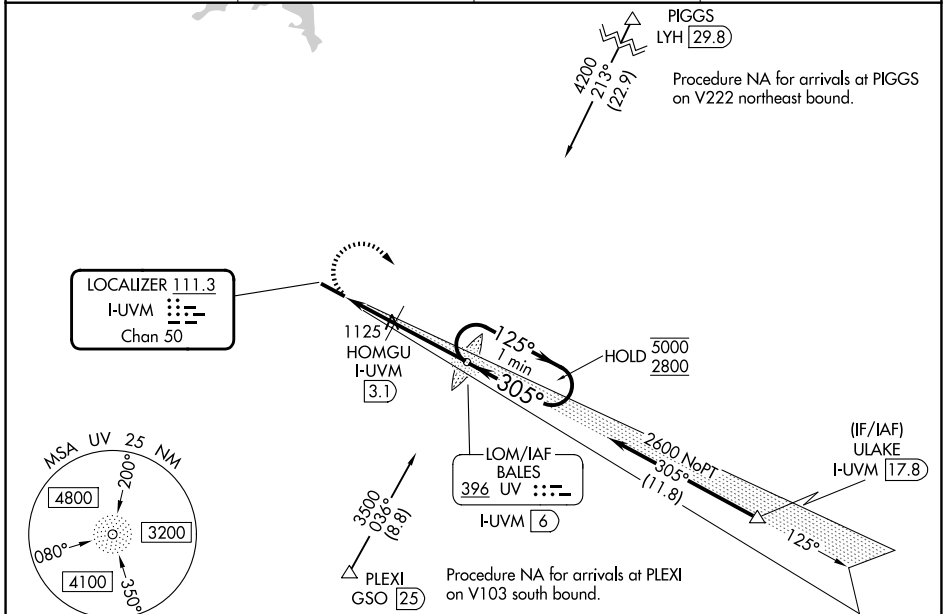
LOC/DME I-UVM <b>111.3</b> Chan <b>50</b>	APP CRS <b>305°</b>	Rwy Ldg <b>5002</b> TDZE <b>925</b> Apt Elev <b>941</b>
---	------------------------	---

# LOC RWY 31

BLUE RIDGE (MTV)

ADF or DME required for procedure entry. ADF required.	ODALS 	MISSED APPROACH: Climbing right turn to 2800 direct BALES LOM/I-UVM 6 DME and hold, continue climb in hold to 2800.
 Rwy 31 helicopter visibility reduction below 3/4 SM NA. For inop ALS while using HOMGU fix minimums, increase Cat C/D visibility to 1 1/2 SM.		
 -16°C		

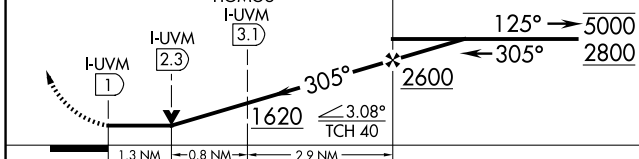
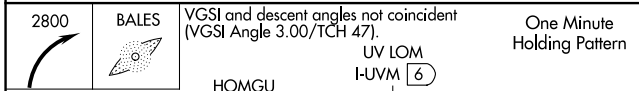
AWOS-3 <b>118.45</b>	GREENSBORO APP CON <b>124.35 269.225</b>	CLNC DEL <b>124.85</b>	UNICOM <b>122.7 (CTAF)</b>
-------------------------	---	---------------------------	-------------------------------



NE-3, 16 APR 2026 to 14 MAY 2026

NE-3, 16 APR 2026 to 14 MAY 2026

ELEV <b>941</b>	TDZE <b>925</b>
-----------------	-----------------



CATEGORY	A	B	C	D
S-31	1620-3/4	695 (700-3/4)	1620-1 1/8	695 (700-1 1/8)
CIRCLING	1620-1	679 (700-1)	1620-2 679 (700-2)	1800-2 3/4 859 (900-2 3/4)
HOMGU FIX MINIMUMS				
S-31	1380-3/4	455 (500-3/4)	1380-1 1/8	455 (500-1 1/8)
CIRCLING	1420-1 479 (500-1)	1440-1 499 (500-1)	1540-1 1/2 599 (600-1 1/2)	1800-2 3/4 859 (900-2 3/4)

MRL Rwy 13-31

REIL Rwys 13 and 31

FAF to MAP 5 NM

Knots	60	90	120	150	180
Min:Sec	5:00	3:20	2:30	2:00	1:40