

WAAS CH <b>49219</b> <b>W16A</b>	APP CRS <b>160°</b>	Rwy Ldg <b>5000</b> TDZE <b>573</b> Apt Elev <b>586</b>
--	------------------------	---

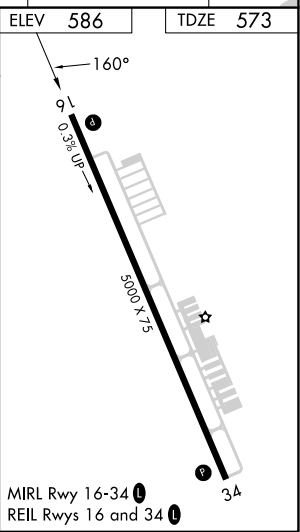
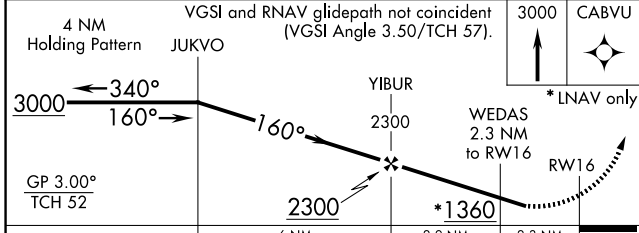
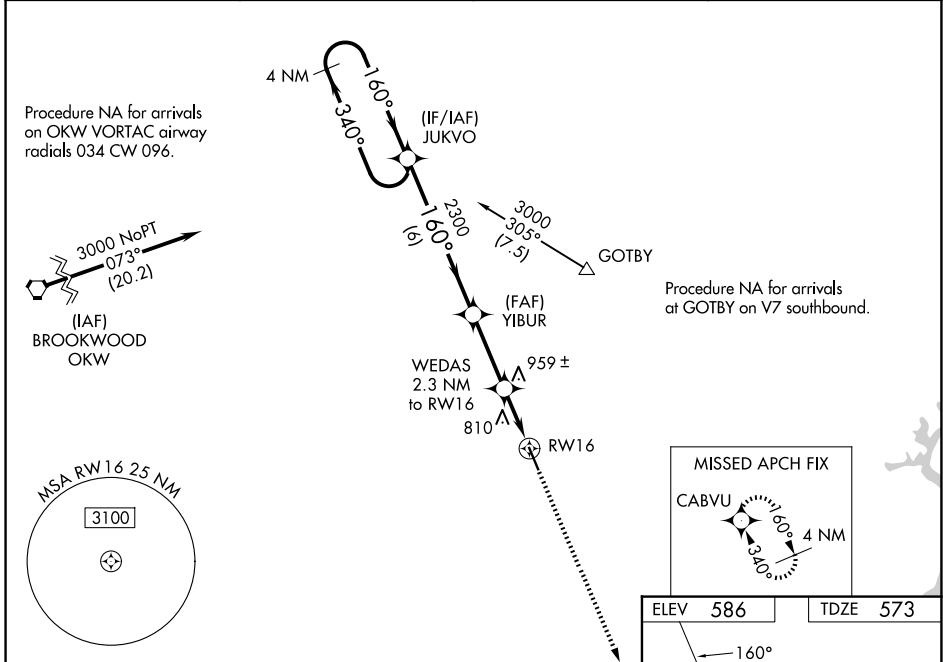
# RNAV (GPS) RWY 16

SHELBY COUNTY (EET)

**⚠** DME/DME RNP-0.3 NA. Visibility reduction by helicopters NA. When local altimeter setting not received, use Birmingham altimeter setting and increase all DA 63 feet and all MDA 80 feet; increase LPV all Cats, LNAV/VNAV all Cats and LNAV Cats C/D and Circling Cat C visibilities ¼ SM. Baro-VNAV NA when using Birmingham altimeter setting. For uncompensated Baro-VNAV systems, LNAV/VNAV NA below -16°C (4°F) or above 47°C (116°F).

MISSED APPROACH: Climb to 3000 direct CABVU and hold.

ASOS <b>134.325</b>	BIRMINGHAM APP CON <b>123.8 256.8</b>	CLNC DEL <b>121.725 (GCO)</b>	UNICOM <b>122.7 (CTAF) 0</b>
------------------------	--	----------------------------------	---------------------------------



CATEGORY	A	B	C	D
LPV DA	931-1¼ 358 (400-1¼)			
LNAV/VNAV DA	1176-2 603 (600-2)			
LNAV MDA	1220-1 647 (700-1)	1220-1¾ 647 (700-1¾)		1220-2 647 (700-2)
CIRCLING	1220-1 634 (700-1)	1340-2¼ 754 (800-2¼)		1580-3 994 (1000-3)

SE-4, 16 APR 2026 to 14 MAY 2026

SE-4, 16 APR 2026 to 14 MAY 2026