

WAAS CH 63219 W34A	APP CRS 340°	Rwy Ldg TDZE 586 Apt Elev 586	5000
--	------------------------	---	-------------

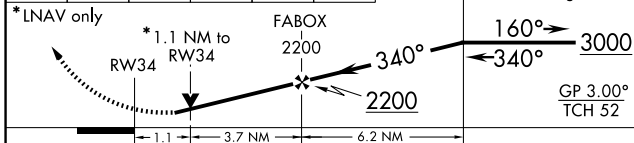
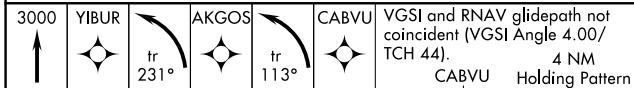
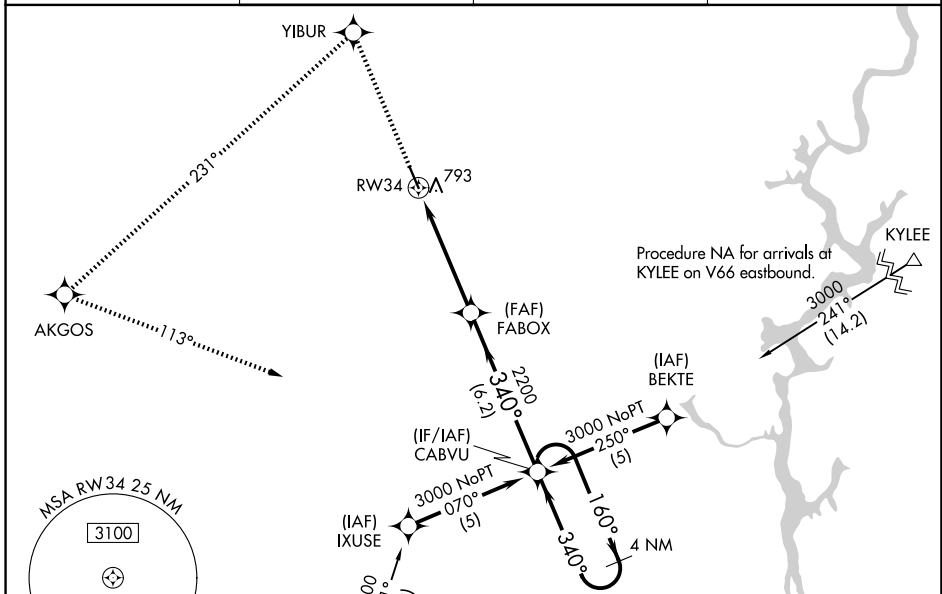
RNAV (GPS) RWY 34

SHELBY COUNTY (E/E/T)

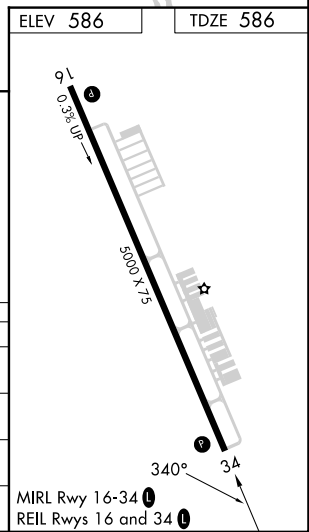
⚠ DME/DME RNP-0.3 NA. Visibility reduction by helicopters NA. When local altimeter setting not received, use Birmingham altimeter setting and increase all DA 63 feet and all MDA 80 feet; increase LPV all Cats, LNAV/VNAV all Cats and Circling Cat C visibilities 1/2 SM. Baro-VNAV NA when using Birmingham altimeter setting. For uncompensated Baro-VNAV systems, LNAV/VNAV NA below -16°C (4°F) or above 47°C (116°F). VDP NA with Birmingham altimeter setting.

⚠ MISSED APPROACH: Climb to 3000 direct YIBUR and left turn on track 231° to AKGOS and left turn on track 113° to CABVU and hold.

ASOS 134.325	BIRMINGHAM APP CON 123.8 256.8	CLNC DEL 121.725 (GCO)	UNICOM 122.7 (CTAF) 1
------------------------	--	----------------------------------	---------------------------------



CATEGORY	A	B	C	D
LPV DA	947-1¼		361 (400-1¼)	
LNAV/VNAV DA	1093-1¾		507 (600-1¾)	
LNAV MDA	1100-1	514 (600-1)	1100-1½ 514 (600-1½)	1100-1¾ 514 (600-1¾)
CIRCLING	1120-1	534 (600-1)	1340-2¼ 754 (800-2¼)	1580-3 994 (1000-3)



SE-4, 16 APR 2026 to 14 MAY 2026

SE-4, 16 APR 2026 to 14 MAY 2026