

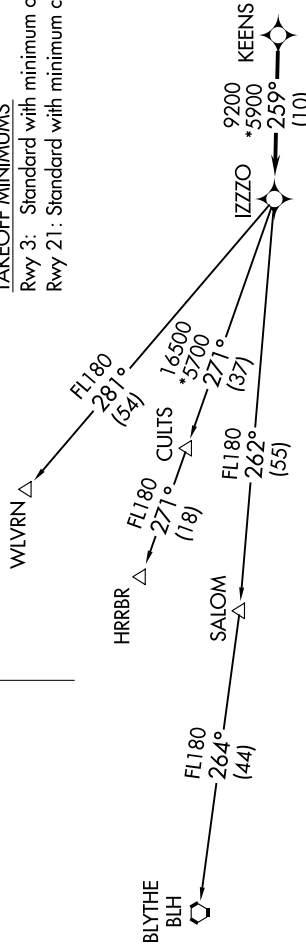
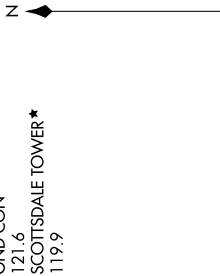
**TOP ALTITUDE:
ASSIGNED BY ATC**

PHOENIX DEP CON
120.7 239.0
ATIS
118.6
CLINIC DEL
124.8
GND CON
121.6
SCOTTSDALE TOWER*
119.9

- NOTE: Turbojets and turboprops only.
- NOTE: Aircraft requesting FL220 and below must file BLYTHE Transition.
- NOTE: Turbojets landing LAX, file WLVRN Transition.
- NOTE: Aircraft landing other than LAX and turboprops landing at LAX: Requesting FL240 and above, file HRRBR Transition.
- NOTE: Aircraft departing KGEU and KGYR ATC assigned only.
- NOTE: Rwy 21: Do not exceed 210K until established on assigned heading.

TAKEOFF MINIMUMS

Rwy 3: Standard with minimum climb of 445' /NM to 4600.
Rwy 21: Standard with minimum climb of 300' /NM to 4600.

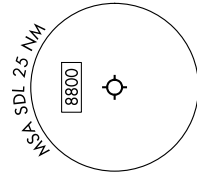


DEPARTURE ROUTE DESCRIPTION

TAKEOFF RUNWAY 3: Climbing left turn heading 335° or as assigned by ATC, thence. . . .
TAKEOFF RUNWAY 21: Climbing right turn heading 335° or as assigned by ATC. Thence. . . .

. . . for RADAR vectors to KEENS, then on track 259° to IZZO, then on (transition).
Maintain ATC assigned altitude, expect filed altitude 3 minutes after departure.

- BLYTHE TRANSITION (IZZ08.BLH)
- HRRBR TRANSITION (IZZ08.HRRBR)
- WLVRN TRANSITION (IZZ08.WLVRN)



NOTE: Chart not to scale.