

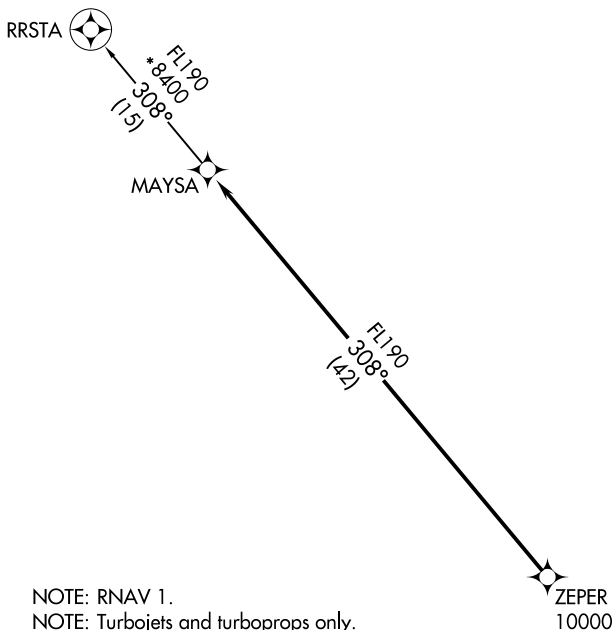
(MAYSA7.MAYSA) 25051

MAYSA SEVEN DEPARTURE (RNAV) AL-5651 (FAA)

SCOTTSDALE (SDL)  
SCOTTSDALE, ARIZONA

**TOP ALTITUDE:  
ASSIGNED BY ATC**

PHOENIX DEP CON 120.7 239.0  
ATIS 118.6  
CLNC DEL 124.8  
GND CON 121.6  
SCOTTSDALE TOWER★ 119.9

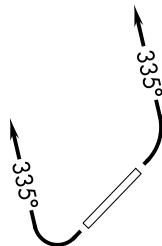


- NOTE: RNAV 1.
- NOTE: Turbojets and turboprops only.
- NOTE: RADAR required.
- NOTE: GPS required.
- NOTE: Aircraft departing KGEU and KGYR ATC assigned only. Do not file.
- NOTE: Rwy 21: Do not exceed 210K until established on assigned heading.

**TAKEOFF MINIMUMS**

Rwy 3: Standard with minimum climb of 445' per NM to 4600.  
Rwy 21: Standard with minimum climb of 300' per NM to 4600.

NOTE: Chart not to scale.



**DEPARTURE ROUTE DESCRIPTION**

TAKEOFF RUNWAY 3: Climbing left turn heading 335° or as assigned by ATC, thence. . . .

TAKEOFF RUNWAY 21: Climbing right turn heading 335° or as assigned by ATC. Thence. . . .

. . . .expect RADAR vectors to cross ZEPER at or above 10000, then on track 308° to MAYSA, then on RRSTA TRANSITION. Maintain ATC assigned altitude, expect filed altitude 3 minutes after departure.

RRSTA TRANSITION (MAYSA7.RRSTA)

MAYSA SEVEN DEPARTURE(RNAV)  
(MAYSA7.MAYSA) 21MAY20

SCOTTSDALE, ARIZONA  
SCOTTSDALE (SDL)

SW-4, 16 APR 2026 to 14 MAY 2026

SW-4, 16 APR 2026 to 14 MAY 2026