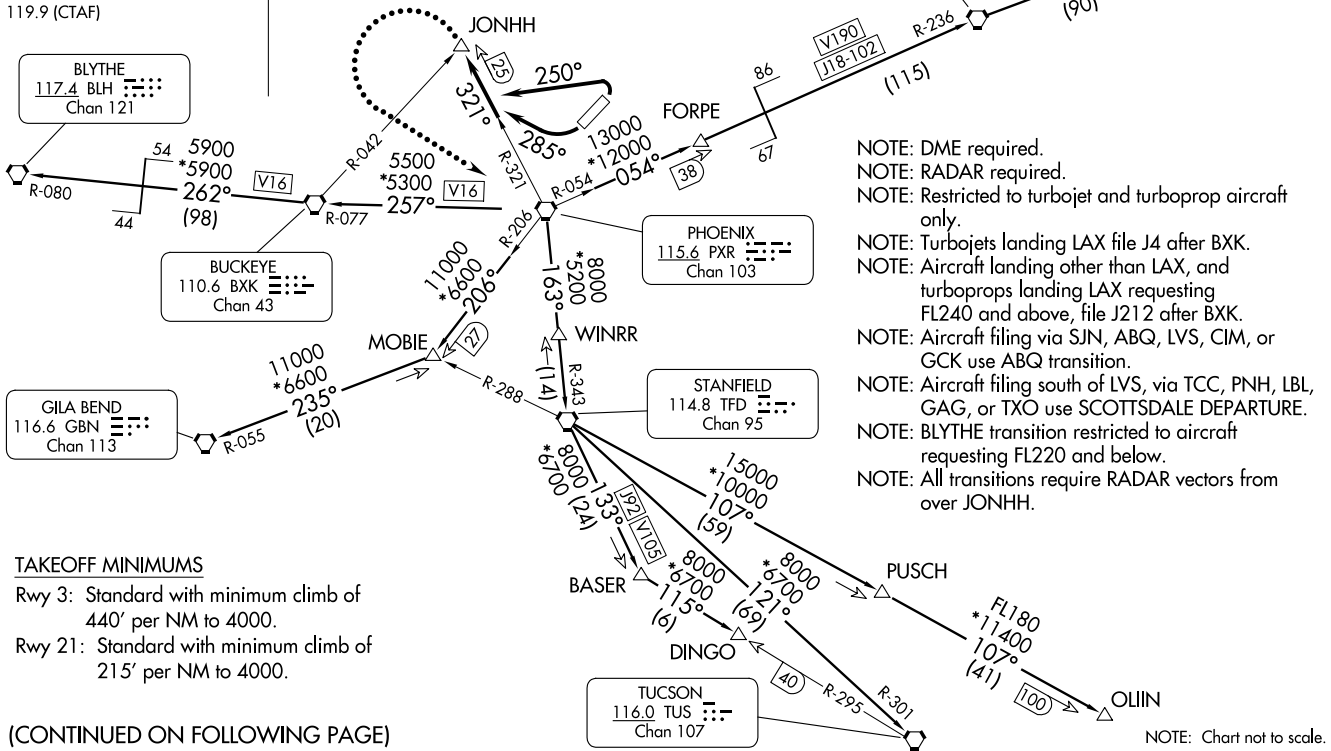


PHOENIX DEP CON
120.7 239.0
ATIS
118.6
CLNC DEL
124.8
GND CON
121.6
SCOTSDALE TOWER*
119.9 (CTAF)

Approximate distance from Take-off area
to JONHH, 18 NM.





DEPARTURE ROUTE DESCRIPTION

TAKEOFF RUNWAY 3: Climbing left turn heading 250° to intercept and proceed via PXR R-321 to JONHH INT. Thence. . . .

TAKEOFF RUNWAY 21: Climbing right turn heading 285° to intercept and proceed via PXR R-321 to JONHH INT. Thence. . . .

. . . .via RADAR vectors to (assigned route).

LOST COMMUNICATIONS: If not in contact with departure control at JONHH INT, turn left direct to PXR VORTAC, thence via assigned transition. Expect filed altitude 3 minutes after departure.

ALBUQUERQUE TRANSITION (SCOT7.ABQ): From over JONHH INT on RADAR vectors and PXR R-054 and SJN R-236 to SJN VORTAC, then on SJN R-059 and ABQ R-240 to ABQ VORTAC.

BLYTHE TRANSITION (SCOT7.BLH): From over JONHH INT on RADAR vectors and BXK R-077 to BXK VORTAC, then on BXK R-262 and BLH R-080 to BLH VORTAC.

BUCKEYE TRANSITION (SCOT7.BXK): From over JONHH INT on RADAR vectors and BXK R-077 to BXK VORTAC.

DINGO TRANSITION (SCOT7.DINGO): From over JONHH INT on RADAR vectors and TFD R-343 to TFD VORTAC, then on TFD R-133 to BASER INT, and then on TUS R-295 to DINGO INT.

GILA BEND TRANSITION (SCOT7.GBN): From over JONHH INT on RADAR vectors and PXR R-206 to MOBIE INT, then on GBN R-055 to GBN VORTAC.

OLIIN TRANSITION (SCOT7.OLIIN): From over JONHH INT on RADAR vectors and TFD R-343 to TFD VORTAC, then on TFD R-107 to PUSCH INT, and then on TFD R-107 to OLIIN INT.

TUCSON TRANSITION (SCOT7.TUS): From over JONHH INT on RADAR vectors and TFD R-343 to TFD VORTAC, then on TFD R-121 and TUS R-301 to TUS VORTAC.

SW-4, 16 APR 2026 to 14 MAY 2026

SW-4, 16 APR 2026 to 14 MAY 2026