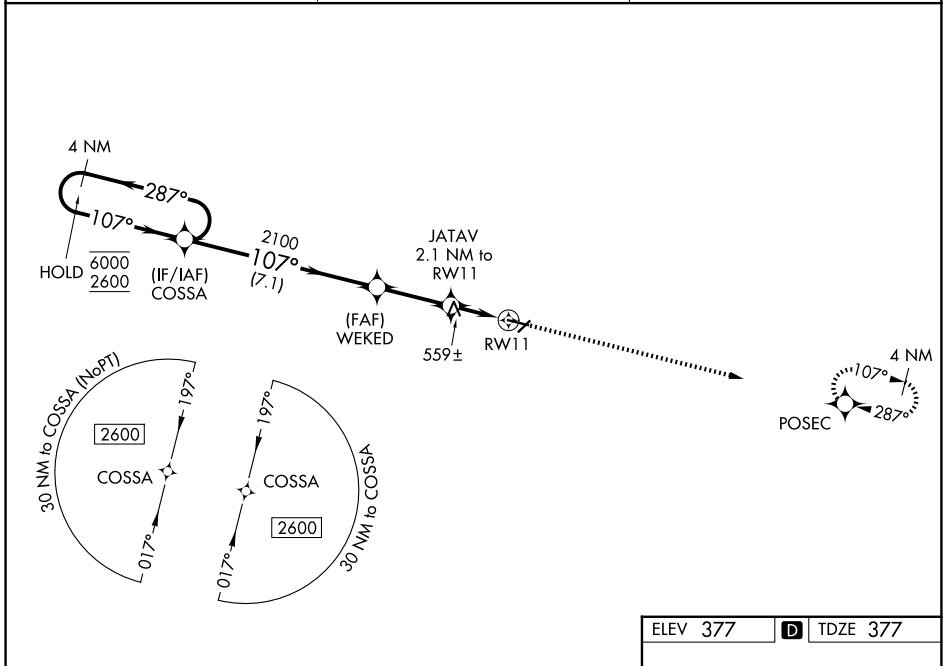


WAAS CH 82521 W11A	APP CRS 107°	Rwy Ldg 4400 TDZE 377 Apt Elev 377
--	------------------------	---

RNAV (GPS) RWY 11

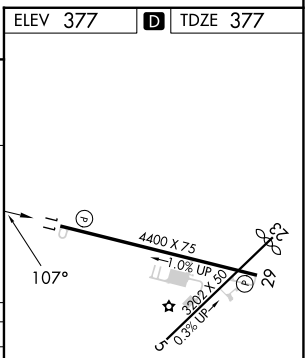
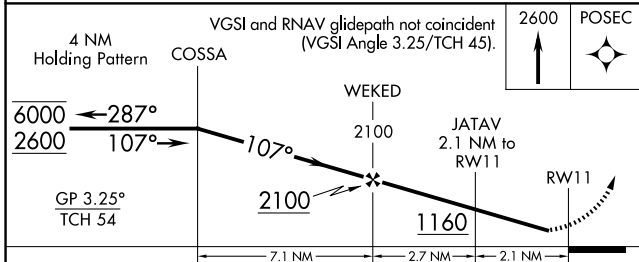
COCHRAN (48A)

RNP APCH - GPS.		<p>MISSED APPROACH: Climb to 2600 direct POSEC and hold.</p>
<p>⚠ Rwy 11 helicopter visibility reduction below 1 SM NA. For uncompensated Baro-VNAV systems, LNAV/VNAV NA below -15°C or above 54°C. Straight-in Rwy 11 NA at night, Circling Rwy 5, 11 and 23 NA at night.</p>		
AWOS-3PT 120.975	ATLANTA APP CON * 124.2 279.6	UNICOM 122.8 (CTAF) 0



SE-4, 16 APR 2026 to 14 MAY 2026

SE-4, 16 APR 2026 to 14 MAY 2026



CATEGORY	A	B	C	D
LPV DA	678-1 301 (400-1)			
LNAV/VNAV DA	690-1 313 (400-1)			
LNAV MDA	820-1 443 (500-1)	820-1 3/8 443 (500-1 3/8)		
CIRCLING	820-1 443 (500-1)	860-1 483 (500-1)	980-1 3/4 603 (700-1 3/4)	980-2 603 (700-2)

MIRL Rwy 11-29 0