

APP CRS	Rwy Ldg	4002
021°	TDZE	765
	Apt Elev	765

RNAV (GPS) RWY 2

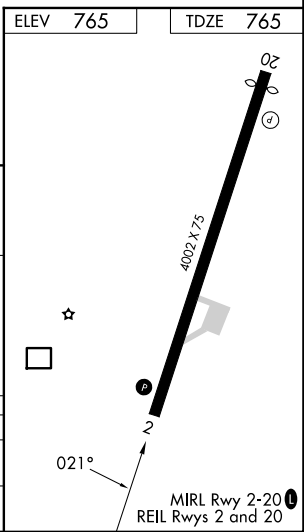
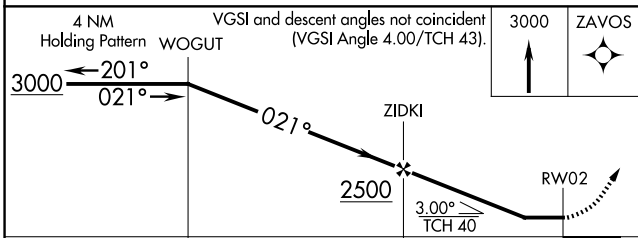
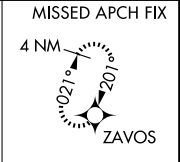
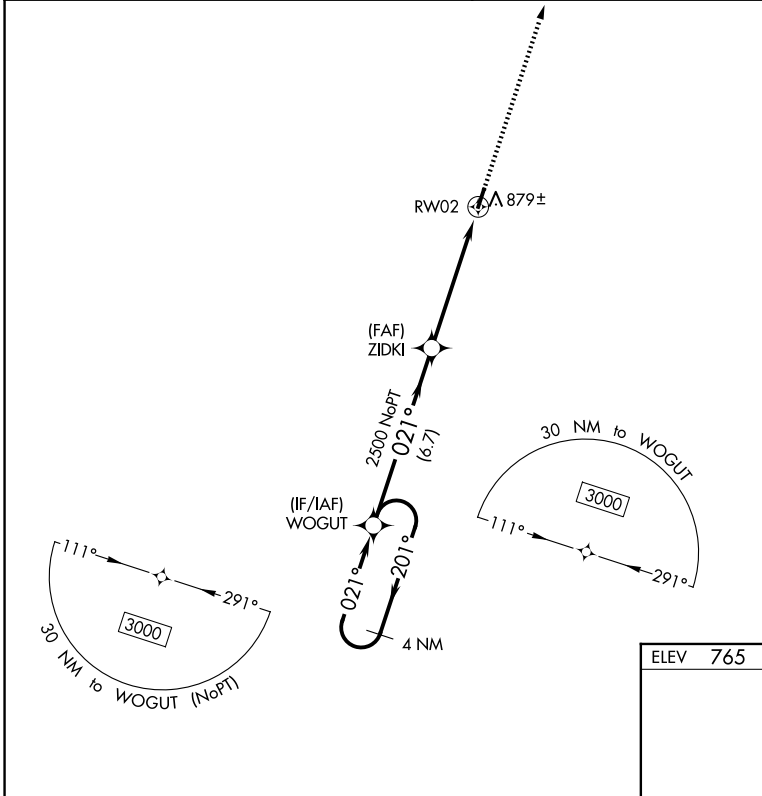
CENTERVILLE MUNI (GHM)

⚠ NA Obtain local altimeter setting on CTAF, when not received, use Columbia/Mount Pleasant altimeter setting and increase all MDA 80 feet. Increase LNAV Cats C and D visibility $\frac{3}{8}$ mile and Circling Cat D $\frac{1}{4}$ mile. DME/DME RNP-0.3 NA. Procedure NA at night. Helicopter visibility reduction below 1 SM NA.

MISSED APPROACH:
Climb to 3000 direct ZAVOS and hold.

NASHVILLE APP CON
119.35 372.0

UNICOM
122.8 (CTAF) 0



CATEGORY	A	B	C	D
LNAV MDA	1140-1 375 (400-1)			
CIRCLING	1260-1	495 (500-1)	1280-1½ 515 (600-1½)	1520-2½ 755 (800-2½)

SE-1, 16 APR 2026 to 14 MAY 2026

SE-1, 16 APR 2026 to 14 MAY 2026