

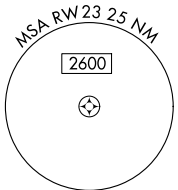
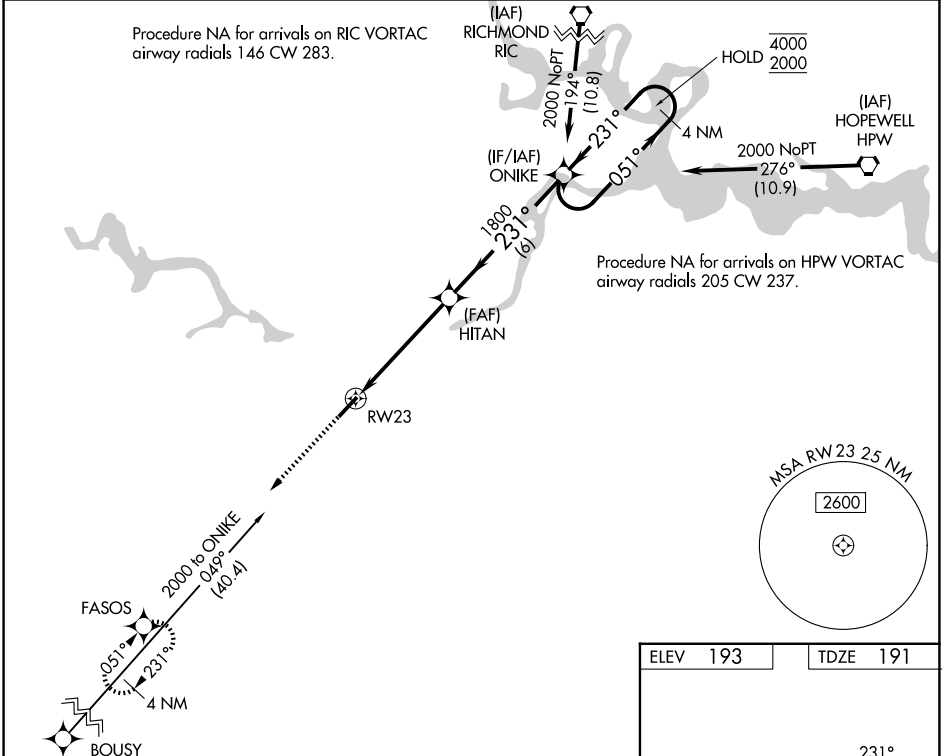
WAAS CH <b>86706</b> <b>W23A</b>	APP CRS <b>231°</b>	Rwy Ldg TDZE <b>191</b> Apt Elev <b>193</b>	<b>5002</b>
--	------------------------	---	-------------

# RNAV (GPS) RWY 23

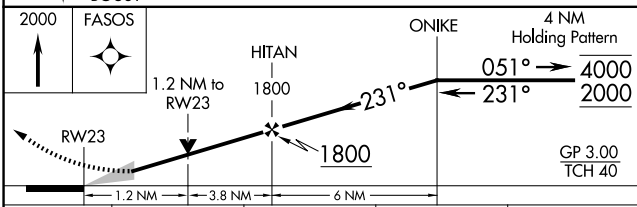
TRI CITIES EXEC/DINWIDDIE COUNTY (PTB)

RNP APCH - GPS.		MISSED APPROACH: Climb to 2000 direct FASOS and hold.	
For uncompensated Baro-VNAV systems, LNAV/VNAV NA below -15°C or above 54°C.			

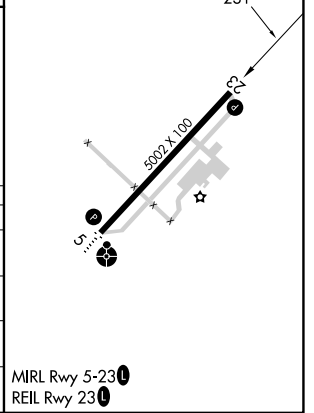
AWOS-3 <b>133.325</b>	POTOMAC APP CON <b>126.75 307.2</b>	GCO <b>135.075</b>	UNICOM <b>122.7 (CTAF) 0</b>
--------------------------	--	-----------------------	---------------------------------



ELEV 193	TDZE 191
----------	----------



CATEGORY	A	B	C	D
LPV DA	441-3/4	250 (300-3/4)		NA
LNAV/VNAV DA	490-7/8	299 (300-7/8)		NA
LNAV MDA	600-1	409 (500-1)	600-1 1/8 409 (500-1 1/8)	NA
CIRCLING	680-1	487 (500-1)	760-1 1/2 567 (600-1 1/2)	NA



NE-3, 16 APR 2026 to 14 MAY 2026

NE-3, 16 APR 2026 to 14 MAY 2026

MIRL Rwy 5-23 0  
REIL Rwy 23 0