

APP CRS	Rwy Idg	<b>5009</b>
<b>137°</b>	TDZE	<b>494</b>
	Apt Elev	<b>494</b>

# RNAV (GPS) RWY 14

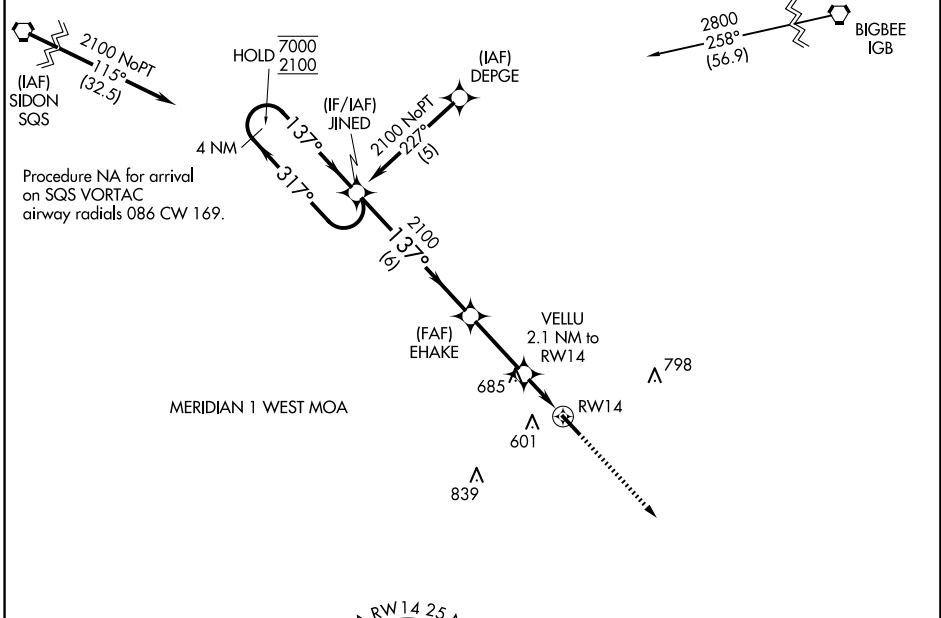
KOSCIUSKO-ATTALA COUNTY (OSX)

RNP APCH - GPS.

**NA** Rwy 14 helicopter visibility reduction below 1 SM NA. Procedure NA at night. Use Philadelphia altimeter setting; when not received, use Greenwood altimeter setting and increase all MDAs 80 feet, increase visibility LNAV Cat C ¼ SM and Circling Cat C ¾ SM.

MISSED APPROACH: Climb to 2200 direct GUDRE and hold.

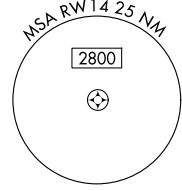
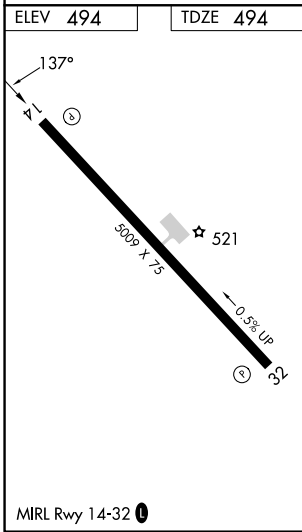
MPE AWOS-3P <b>118.725</b>	MEMPHIS CENTER <b>132.75 263.0</b>	CTAF <b>122.9</b>
-------------------------------	---------------------------------------	----------------------



Procedure NA for arrival on SQS VORTAC airway radials 086 CW 169.

SC-4, 16 APR 2026 to 14 MAY 2026

SC-4, 16 APR 2026 to 14 MAY 2026



4 NM Holding Pattern		JINED	EHAKE	VELLU 2.1 NM to RW14	RW14
7000	2100	2100	1180		
← 317°		→ 137°	→ 137°	→ 137°	
6 NM		2.8 NM		2.1 NM	
CATEGORY	A	B	C	D	
LNAV MDA	1020-1	526 (600-1)	1020-1½ 526 (600-1½)	NA	
CIRCLING	1020-1	526 (600-1)	1160-1¾ 666 (700-1¾)	NA	