

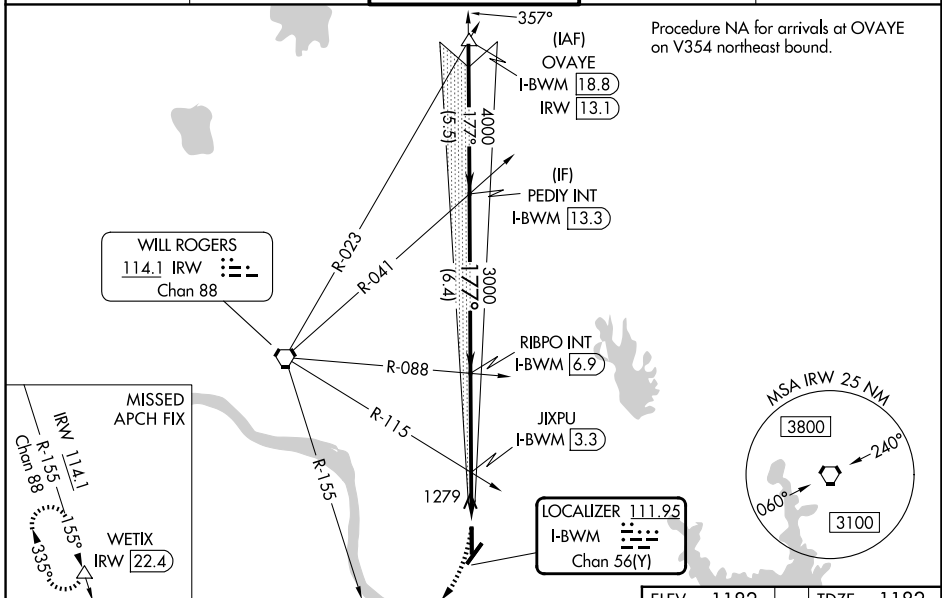
LOC/DME I-BWMM <b>111.95</b> Chan <b>56(Y)</b>	APP CRS <b>177°</b>	Rwy Ldg <b>5199</b> TDZE <b>1182</b> Apt Elev <b>1182</b>
--	------------------------	---

# ILS or LOC RWY 18

UNIVERSITY OF OKLAHOMA WESTHEIMER (OUN)

DME required.	MALSR	MISSED APPROACH: Climbing right turn to 3100 on heading 185° and IRW VORTAC R-155 to WETIX/IRW VORTAC 22.4 DME and hold.
---------------	-------	--

AWOS-3PT <b>119.55</b>	OKE CITY APP CON <b>120.45 288.325</b>	WESTHEIMER TOWER★ <b>118.0 (CTAF) 0</b>	GND CON <b>121.6</b>	UNICOM <b>122.95</b>
---------------------------	---	--	-------------------------	-------------------------



Procedure NA for arrivals at OVAYE on V354 northeast bound.

PEDIY INT I-BWMM <b>13.3</b>	VGSI and ILS glidepath not coincident (VGSI Angle 3.00/TCH 55).	3100	IRW R-155	WETIX
4000	RIBPO INT I-BWMM <b>6.9</b>	hdg 185°		△
3000	JIXPU INT I-BWMM <b>3.3</b>			*LOC only.
GS 3.00° TCH 51	I-BWMM <b>2.3</b>			
*1860 when using OKC altimeter setting.	I-BWMM <b>1.3</b>			
6.4 NM	3.6 NM	1 NM	1 NM	

ELEV 1182	TDZE 1182
177°	81
5199 X 100	36
REIL Rwy 36	1
MIRL Rwys 3-21 and 18-36	1
FAF to MAP 5.6 NM	
Knots	60 90 120 150 180
Min:Sec	5:36 3:44 2:48 2:14 1:52

CATEGORY	A	B	C	D
S-ILS 18		1382-1/2	200 (200-1/2)	
S-LOC 18	1800-1/2	618 (700-1/2)	1800-13/8	618 (700-13/8)
CIRCLING	1800-1	618 (700-1)	1940-21/4	1940-21/2
JIXPU FIX MINIMUMS (DUAL VOR RECEIVERS OR DME REQUIRED)				
S-LOC 18	1540-1/2	358 (400-1/2)	1540-5/8	358 (400-5/8)
CIRCLING	1660-1	478 (500-1)	1940-21/4	1940-21/2

SC-1, 16 APR 2026 to 14 MAY 2026

SC-1, 16 APR 2026 to 14 MAY 2026