


LOC/DME I-PHY 111.1 Chan 48	APP CRS 033°	Rwy Ldg TDZE 1177 Apt Elev 1182	4748
---	------------------------	---	-------------


LOC RWY 3

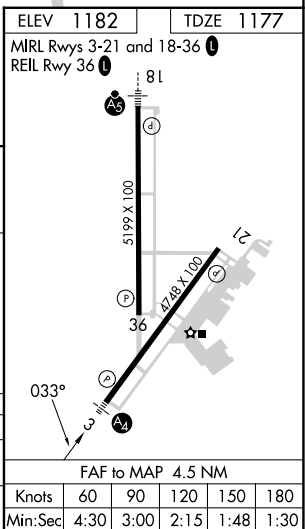
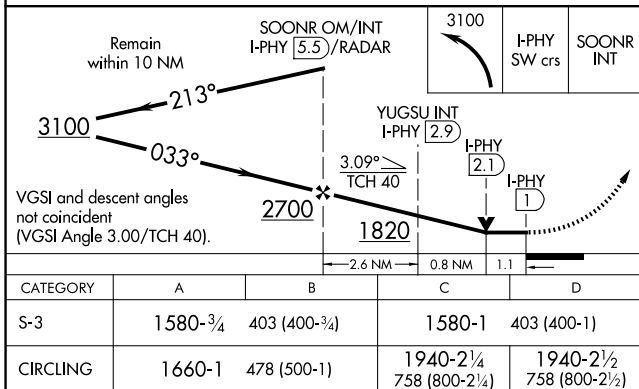
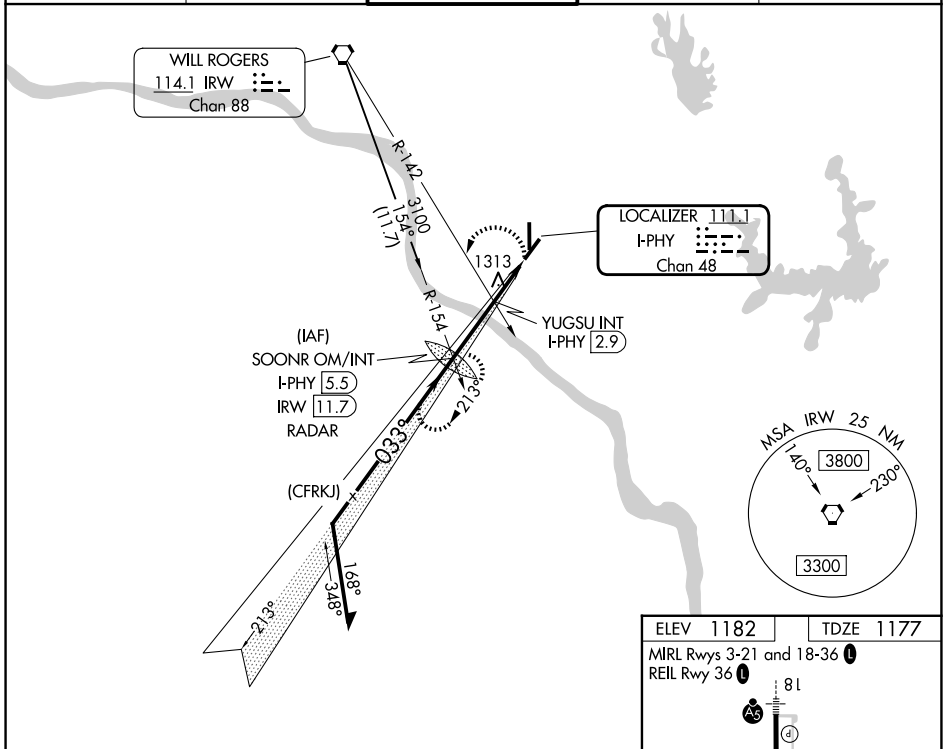
UNIVERSITY OF OKLAHOMA WESTHEIMER (OUN)

⚠ When local altimeter setting not received, use OKC Will Rogers Intl altimeter setting and increase all MDA 60 feet; increase S-3 Cat C/D visibility ¼ mile, Circling Cat C/D ½ mile. For inop MALS increase S-3 Cat C/D visibility to 1¾ mile. For inop MALS when using OKC Will Rogers Intl altimeter setting, increase S-3 Cat C/D visibility to 1¾ mile. Circling NA southeast of Rwy 3 and 21.

MALS 

MISSED APPROACH: Climbing left turn to 3100 on I-PHY SW course to SOONR OM/INT/I-PHY 5.5 DME/RADAR and hold, continue climb-in-hold to 3100.

AWOS-3PT 119.55	OKE CITY APP CON 120.45 288.325	WESTHEIMER TOWER* 118.0 (CTAF) 	GND CON 121.6	UNICOM 122.95
---------------------------	---	--	-------------------------	-------------------------



SC-1, 16 APR 2026 to 14 MAY 2026

SC-1, 16 APR 2026 to 14 MAY 2026