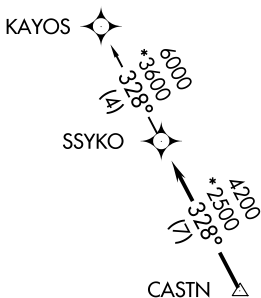


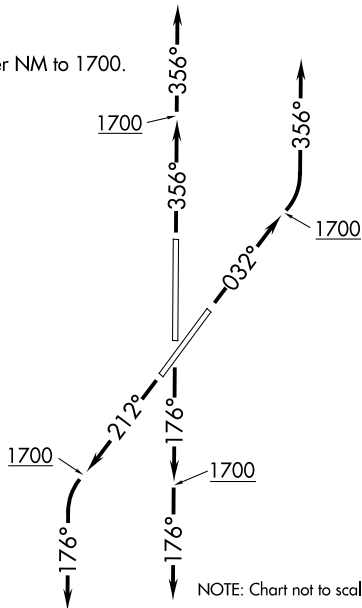
AWOS-3PT
119.55
GND CON
121.6
WESTHEIMER TOWER *
118.0
OKE CITY DEP CON
120.45 288.325

**TOP ALTITUDE:
ASSIGNED BY ATC**



TAKEOFF MINIMUMS

Rwys 3, 18, 21, 36: Standard with minimum climb of 500' per NM to 1700.



- NOTE: RADAR required.
- NOTE: DME/DME/IRU or GPS required.
- NOTE: RNAV 1.

NOTE: Chart not to scale.

DEPARTURE ROUTE DESCRIPTION

TAKEOFF RUNWAY 3: Climb on heading 032° to 1700, then left turn heading 356° or as assigned by ATC, expect RADAR vectors to CASTN, thence . . .

TAKEOFF RUNWAY 18: Climb on heading 176° to 1700, then heading 176° or as assigned by ATC, expect RADAR vectors to CASTN, thence . . .

TAKEOFF RUNWAY 21: Climb on heading 212° to 1700, then left turn heading 176° or as assigned by ATC, expect RADAR vectors to CASTN, thence . . .

TAKEOFF RUNWAY 36: Climb on heading 356° to 1700, then heading 356° or as assigned by ATC, expect RADAR vectors to CASTN, thence . . .

. . . on track 328° to SSYKO, then on (transition). Maintain 3000 or as assigned by ATC. Expect filed altitude 10 minutes after departure.

KAYOS TRANSITION (SSYKO3.KAYOS)