

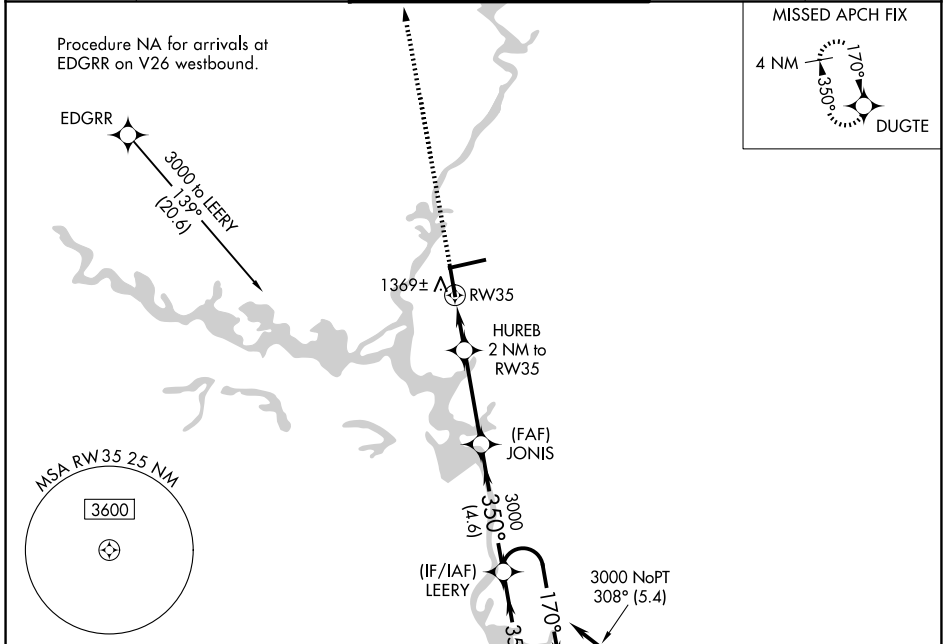
WAAS CH <b>93521</b> <b>W35A</b>	APP CRS <b>350°</b>	Rwy Ldg TDZE Apt Elev	<b>6501</b> <b>1251</b> <b>1277</b>
--	------------------------	-----------------------------	---

# RNAV (GPS) RWY 35

CENTRAL WISCONSIN(CWA)

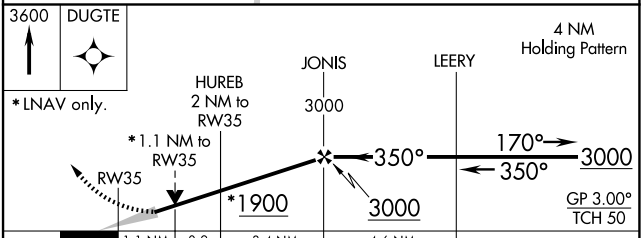
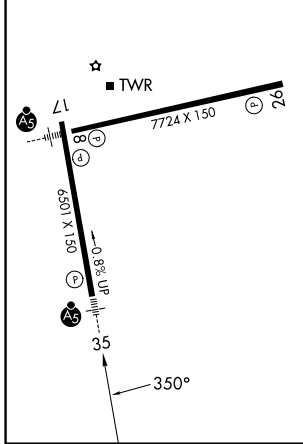
For uncompensated Baro-VNAV systems, LNAV/VNAV NA below -17°C (2°F) or above 54°C (130°F). DME/DME RNP-0.3 NA.	MALSR ALS	MISSED APPROACH: Climb to 3600 direct DUGTE and hold.
	MISSED APCH FIX 4 NM 170° 350° DUGTE	

ATIS <b>127.45</b>	MINNEAPOLIS CENTER <b>124.4 317.7</b>	CWA TOWER* <b>119.75 (CTAF) 0 360.7</b>	GND CON <b>121.9 360.7</b>	UNICOM <b>122.95</b>
-----------------------	--	--	-------------------------------	-------------------------



ELEV <b>1277</b>	<b>D</b>	TDZE <b>1251</b>
------------------	----------	------------------

REIL Rwy 17 and 26   
 HIRL Rwy 8-26 and 17-35



CATEGORY	A	B	C	D
LPV DA		1451- <sup>1</sup> / <sub>2</sub>	200 (200- <sup>1</sup> / <sub>2</sub> )	
LNAV/VNAV DA		1576- <sup>3</sup> / <sub>4</sub>	325 (300- <sup>3</sup> / <sub>4</sub> )	
LNAV MDA	1620- <sup>1</sup> / <sub>2</sub>	369 (400- <sup>1</sup> / <sub>2</sub> )	1620- <sup>5</sup> / <sub>8</sub>	369 (400- <sup>5</sup> / <sub>8</sub> )
CIRCLING	1740-1	463 (500-1)	1740- <sup>1</sup> / <sub>2</sub> 463 (500- <sup>1</sup> / <sub>2</sub> )	1840-2 563 (600-2)

EC-3, 16 APR 2026 to 14 MAY 2026

EC-3, 16 APR 2026 to 14 MAY 2026