

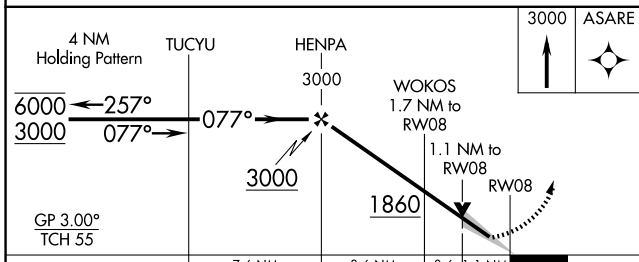
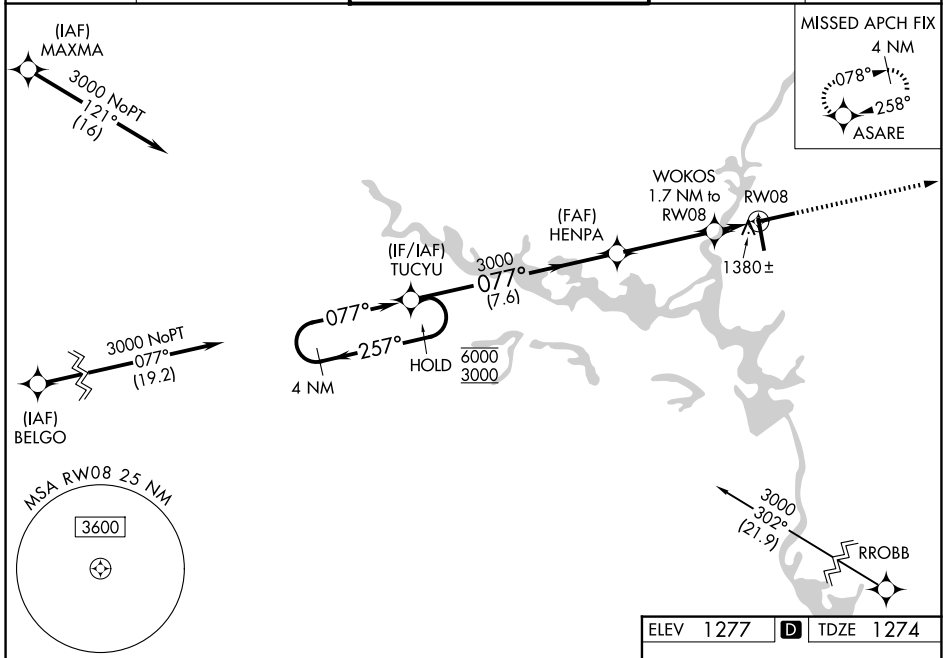
WAAS CH 42820 W08A	APP CRS 077°	Rwy Ldg TDZE Apt Elev	7724 1274 1277
--	------------------------	-----------------------------	---

RNAV (GPS) RWY 8

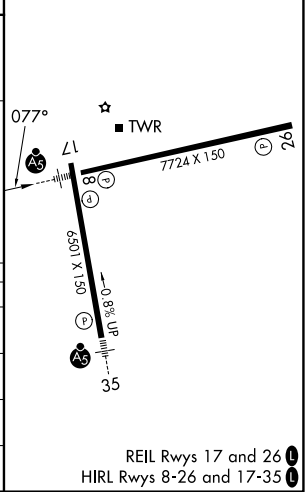
CENTRAL WISCONSIN (CWA)

RNP APCH - GPS.		MALSR	MISSED APPROACH: Climb to 3000 direct ASARE and hold.
<p>For uncompensated Baro-VNAV systems, LNAV/VNAV NA below -17°C or above 54°C. For inop ALS, increase LNAV Cat C and D visibility to 1½ SM.</p>			

ATIS 127.45	MINNEAPOLIS CENTER 124.4 317.7	CWA TOWER ★ 119.75 (CTAF) 360.7	GND CON 121.9 360.7	UNICOM 122.95
-----------------------	--	---	-------------------------------	-------------------------



ELEV 1277	D	TDZE 1274
-----------	---	-----------



CATEGORY	A	B	C	D
LPV DA		1474-½	200 (200-½)	
LNAV/VNAV DA		1601-½	327 (400-½)	
LNAV MDA	1640-½ 366 (400-½)		1640-¾ 366 (400-¾)	
CIRCLING	1740-1 463 (500-1)		1740-1½ 463 (500-1½)	1840-2 563 (600-2)

REIL Rwy 17 and 26
HIRL Rwy 8-26 and 17-35

EC-3, 16 APR 2026 to 14 MAY 2026

EC-3, 16 APR 2026 to 14 MAY 2026