

SKYEE ONE DEPARTURE (RNAV)

CLNC DEL
120.25
DENVER DEP CON
134.85 251.125

**TOP ALTITUDE:
FL230**

TAKEOFF MINIMUMS

Rwys 6, 24: NA.

Rwys 15, 33: Standard.

NOTE: DME/DME/IRU or GPS required.

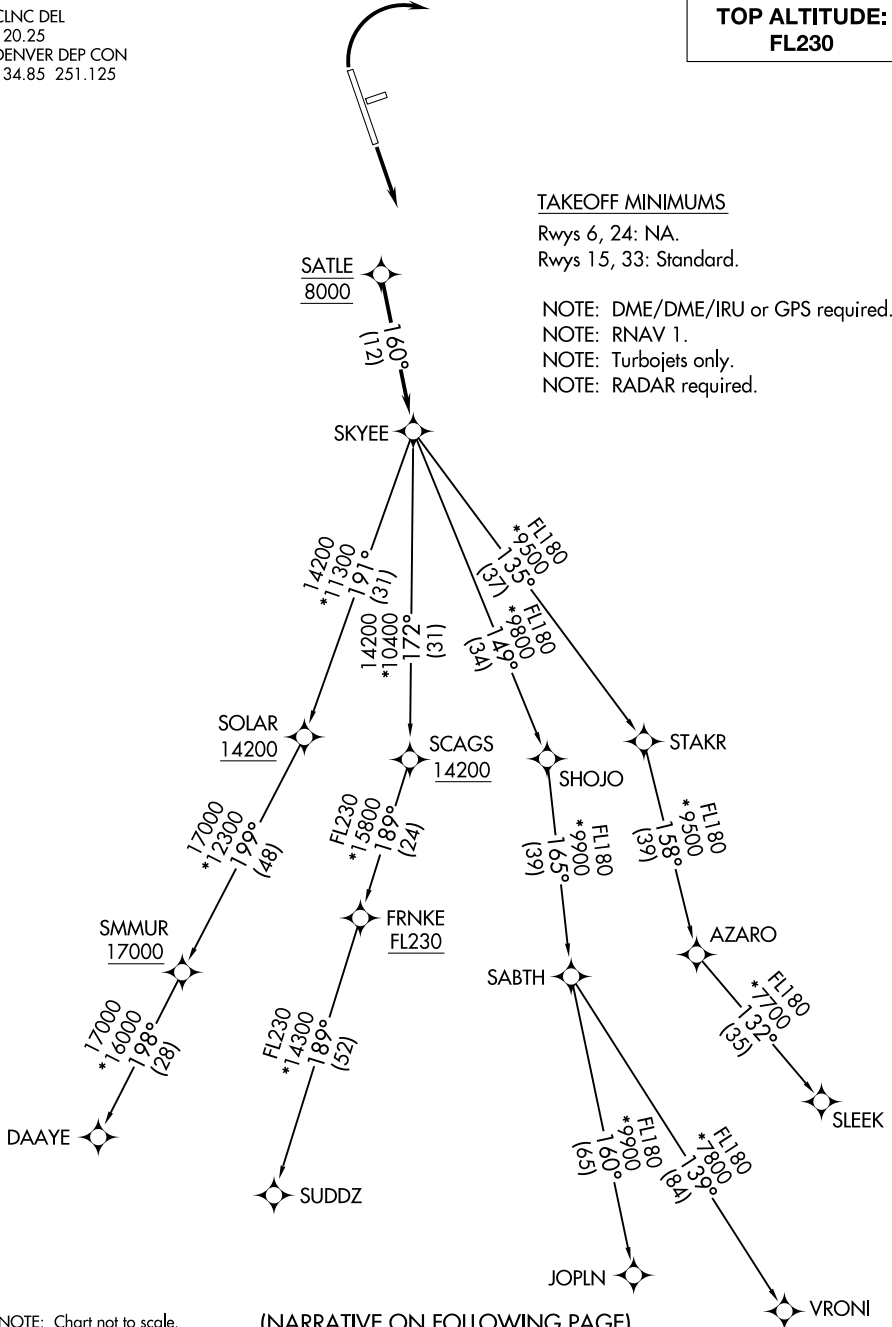
NOTE: RNAV 1.

NOTE: Turbojets only.

NOTE: RADAR required.

SW-1, 16 APR 2026 to 14 MAY 2026

SW-1, 16 APR 2026 to 14 MAY 2026



NOTE: Chart not to scale.

(NARRATIVE ON FOLLOWING PAGE)

SKYEE ONE DEPARTURE (RNAV)



DEPARTURE ROUTE DESCRIPTION

TAKEOFF RUNWAY 15: Climb on a heading between 350° CW 180° as assigned by ATC. Thence. . . .

TAKEOFF RUNWAY 33: Climbing right turn on a heading between 350° CW 150° as assigned by ATC. Thence. . . .

. . . .expect RADAR vectors to cross SATLE at 8000 then on track 160° to SKYEE then on (transition) maintain FL230 or filed lower altitude. Expect higher filed altitude ten minutes after departure.

DAAYE TRANSITION (SKYEE1.DAAYE)

JOPLN TRANSITION (SKYEE1.JOPLN)

SLEEK TRANSITION (SKYEE1.SLEEK)

SUDDZ TRANSITION (SKYEE1.SUDDZ)

VRONI TRANSITION (SKYEE1.VRONI)

SW-1, 16 APR 2026 to 14 MAY 2026

SW-1, 16 APR 2026 to 14 MAY 2026