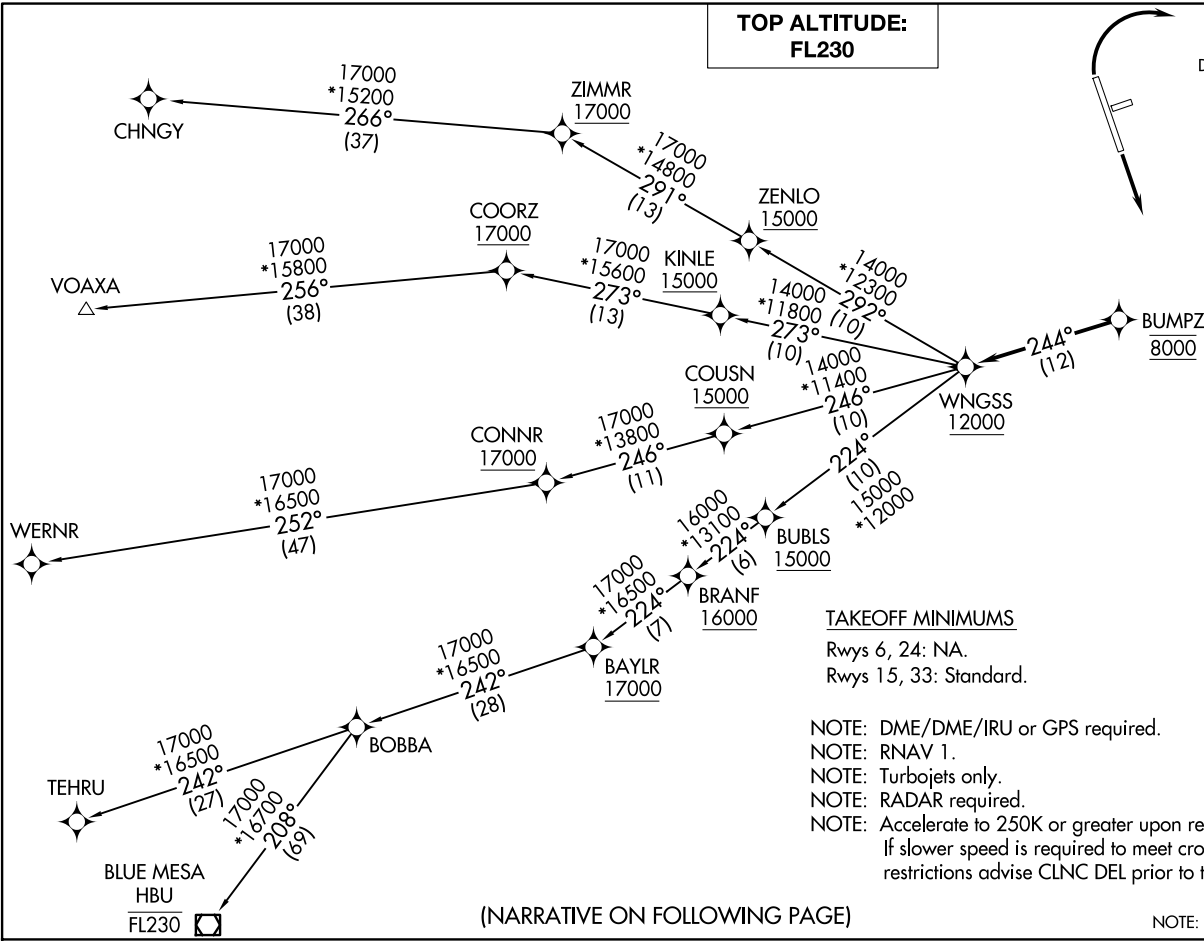


**TOP ALTITUDE:  
FL230**

CLNC DEL 120.25  
DENVER DEP CON 134.85 251.125



TAKEOFF MINIMUMS  
Rwys 6, 24: NA.  
Rwys 15, 33: Standard.

NOTE: DME/DME/IRU or GPS required.  
NOTE: RNAV 1.  
NOTE: Turbojets only.  
NOTE: RADAR required.  
NOTE: Accelerate to 250K or greater upon reaching 10000.  
If slower speed is required to meet crossing restrictions advise CLNC DEL prior to taxi.

(NARRATIVE ON FOLLOWING PAGE)

NOTE: Chart not to scale.

WNGSS ONE DEPARTURE (RNAV) (WNGSS1, WNGSS) 26MAY20  
FORT COLLINS/LOVELAND, COLORADO  
NORTHERN COLORADO RGNL (FNTL)

(WNGSS1, WNGSS) 20086  
WNGSS ONE DEPARTURE (RNAV) A1-5677 (FAA)  
NORTHERN COLORADO RGNL (FNTL)  
FORT COLLINS/LOVELAND, COLORADO



DEPARTURE ROUTE DESCRIPTION

TAKEOFF RUNWAY 15: Climb on a heading between 350° CW 180° as assigned by ATC. Thence. . . .

TAKEOFF RUNWAY 33: Climbing right turn on a heading between 350° CW 150° as assigned by ATC. Thence. . . .

. . . .expect RADAR vectors to cross BUMPZ at 8000 then on track 244° to cross WNGSS at or above 12000 then on (transition) maintain FL230 or filed lower altitude. Expect higher filed altitude ten minutes after departure.

BLUE MESA TRANSITION (WNGSS1.HBU)

CHNGY TRANSITION (WNGSS1.CHNGY)

TEHRU TRANSITION (WNGSS1.TEHRU)

VOAXA TRANSITION (WNGSS1.VOAXA)

WERNR TRANSITION (WNGSS1.WERNR)

SW-1, 16 APR 2026 to 14 MAY 2026

SW-1, 16 APR 2026 to 14 MAY 2026