

APP CRS	Rwy Ldg	4001
294°	TDZE	1158
	Apt Elev	1158

RNAV (GPS) RWY 29

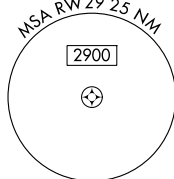
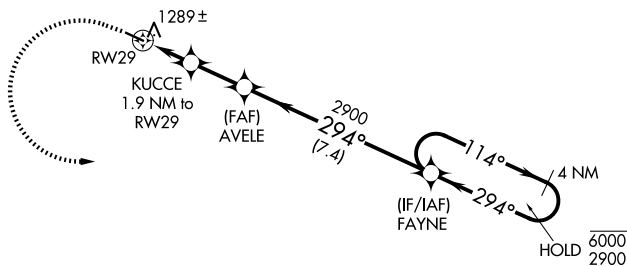
DECORAH MUNI (DEH)

RNP APCH - GPS.

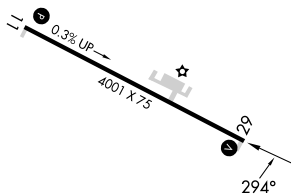
▼
▲ Rwy 29 helicopter visibility reduction below 1 SM NA.

MISSED APPROACH: Climb to 1800 then climbing left turn to 2900 direct FAYNE and hold.

AWOS-3 120.925	MINNEAPOLIS CENTER 118.85	UNICOM 122.8 (CTAF) 0
--------------------------	-------------------------------------	---------------------------------



ELEV 1158	TDZE 1158
-----------	-----------



1800	2900	FAYNE	VGSI and descent angles not coincident (VGSI Angle 4.00/TCH 58).	
			AVELE	FAYNE
			4 NM Holding Pattern	
	KUCCE 1.9 NM to RWY 29	≤ 4.00° TCH 40	2900	6000 / 2900
	2000	294°	114°	
	1.9 NM	2.1 NM	7.4 NM	
CATEGORY	A	B	C	D
LNAV MDA	1540-1	382 (400-1)	NA	
CIRCLING	1620-1	462 (500-1)	NA	

REIL Rwy 11 and 29 **0**
MIRL Rwy 11-29 **0**