


WAAS CH <b>78415</b> <b>W18A</b>	APP CRS <b>185°</b>	Rwy Ldg TDZE <b>1197</b> Apt Elev <b>1197</b>
--	------------------------	---

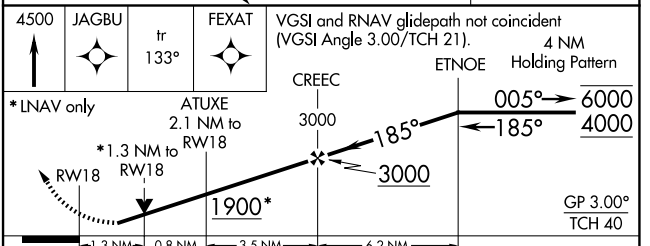
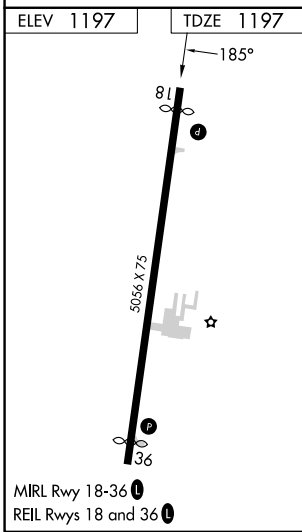
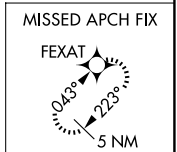
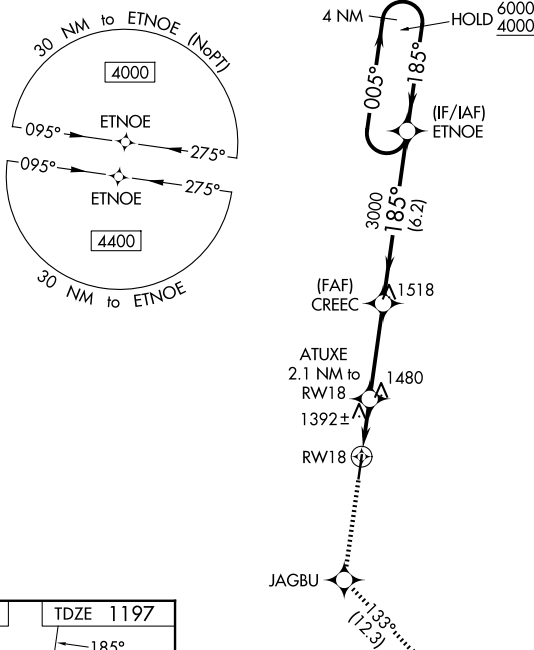
# RNAV (GPS) RWY 18

LE MARS MUNI (L.R.J)

RNP APCH.  

 Rwy 18 helicopter visibility reduction below 3/4 SM NA.  
 For uncompensated Baro-VNAV systems, LNAV/VNAV NA below -17°C or above 54°C.

MISSED APPROACH: Climb to 4500 direct JAGBU and on track 133° to FEXAT and hold.

AWOS-3P <b>120.975</b>	SIOUX CITY APP CON * <b>124.6 307.0</b>	UNICOM <b>122.8 (CTAF) 0</b>
---------------------------	--	---------------------------------



CATEGORY	A	B	C	D
LPV DA	1479-1 282 (300-1)			NA
LNAV/VNAV DA	1691-1 3/8 494 (500-1 3/8)			NA
LNAV MDA	1660-1 463 (500-1)	1660-1 3/8 463 (500-1 3/8)		NA
CIRCLING	1760-1 563 (600-1)	1780-1 583 (600-1)	1840-1 3/4 643 (700-1 3/4)	NA

NC-3, 16 APR 2026 to 14 MAY 2026

NC-3, 16 APR 2026 to 14 MAY 2026