

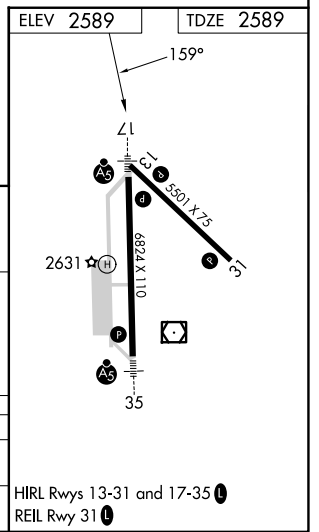
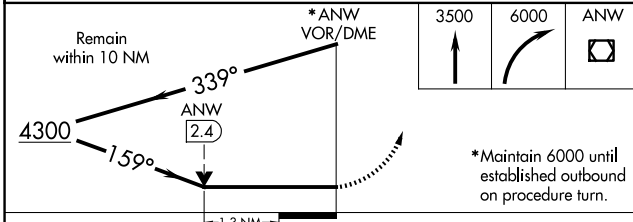
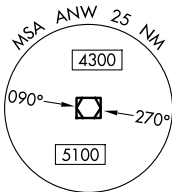
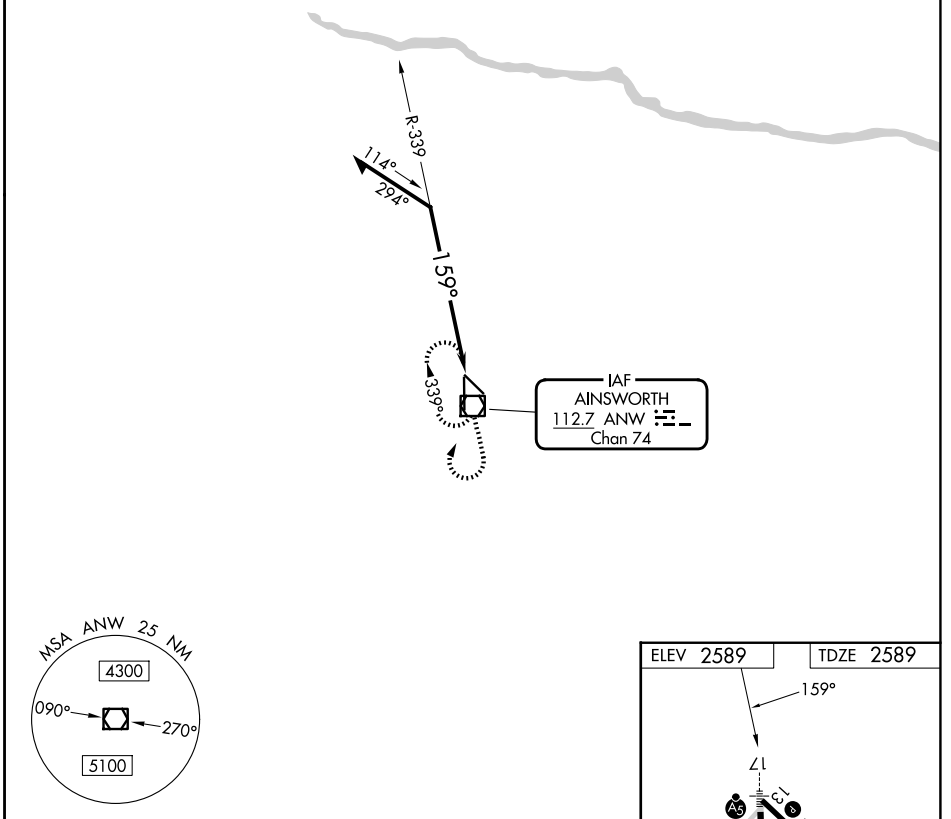
VOR/DME ANW <b>112.7</b> Chan <b>74</b>	APP CRS <b>159°</b>	Rwy Ldg TDZE Apt Elev	<b>6824</b> <b>2589</b> <b>2589</b>
---	------------------------	-----------------------------	---

# VOR RWY 17

AINSWORTH RGNL (A.N.W)

	MALS R	MISSED APPROACH: Climb to 3500 then climbing right turn to 6000 direct ANW VOR/DME and hold.

AWOS-3 <b>118.325</b>	DENVER CENTER <b>127.95 338.2</b>	UNICOM <b>122.8 (CTAF)</b>
--------------------------	--------------------------------------	-------------------------------



CATEGORY	A	B	C	D
S-17	3060-1/2	471 (500-1/2)	3060-3/4 471 (500-3/4)	3060-1 471 (500-1)
CIRCLING	3060-1	471 (500-1)	3060-1 1/2 471 (500-1 1/2)	3200-2 611 (700-2)

NC-2, 16 APR 2026 to 14 MAY 2026

NC-2, 16 APR 2026 to 14 MAY 2026