

WAAS CH <b>72704</b> W13A	APP CRS <b>133°</b>	Rwy Ldg TDZE Apt Elev	<b>4300</b> <b>896</b> <b>897</b>
---------------------------------	------------------------	-----------------------------	---

# RNAV (GPS) RWY 13

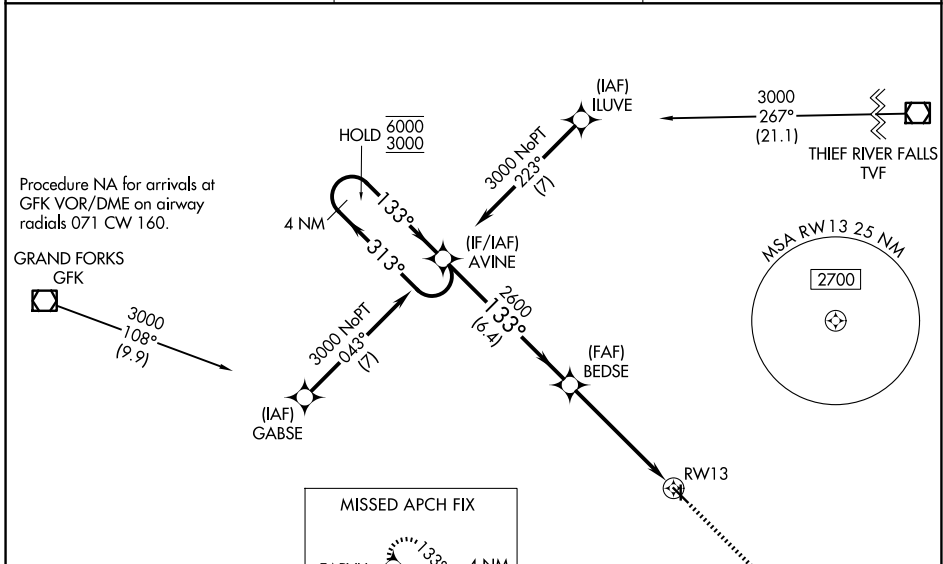
CROOKSTON MUNI/KIRKWOOD FLD (CKN)

RNP APCH - GPS.

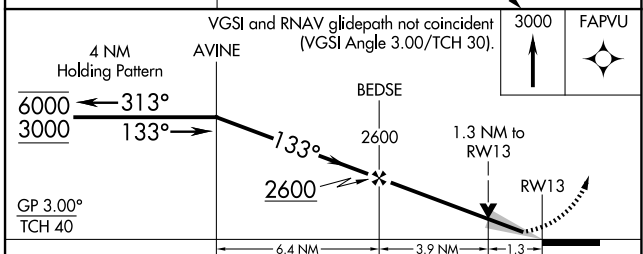
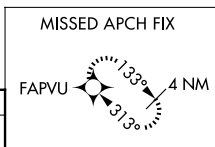
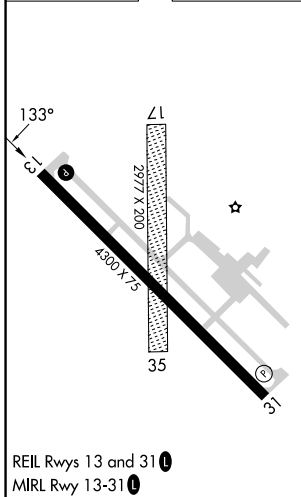
**⚠** For uncompensated Baro-VNAV systems, LNAV/VNAV NA below -16°C or above 54°C. Circling NA to Rwy 17 and 35. Baro-VNAV and VDP NA when using GFK altimeter setting. When local altimeter setting not received, use GFK altimeter setting and increase LPV DA to 1159 feet. Increase LNAV/VNAV DA to 1347 feet and all visibilities ¼ SM. Increase all MDAs 80 feet and LNAV visibility Cat C ½ SM, and Circling visibility Cat C ¼ SM.

MISSED APPROACH: Climb to 3000 direct FAPVU and hold.

AWOS-3 <b>126.425</b>	GRAND FORKS APP CON* <b>118.1 318.1</b>	UNICOM <b>122.7 (CTAF) 0</b>
--------------------------	--	---------------------------------



ELEV 897	TDZE 896
----------	----------



CATEGORY	A	B	C	D
LPV DA	1096-1 200 (200-1)			NA
LNAV/VNAV DA	1284-1½ 388 (400-1½)			NA
LNAV MDA	1340-1	444 (500-1)	1340-1¾ 444 (500-1¾)	NA
CIRCLING	1340-1 443 (500-1)	1360-1 463 (500-1)	1480-1½ 583 (600-1½)	NA

NC-1, 16 APR 2026 to 14 MAY 2026

NC-1, 16 APR 2026 to 14 MAY 2026