

RNAV (GPS) RWY 31

CROOKSTON MUNI/KIRKWOOD FLD (CKN)

WAAS CH 69304 W31A	APP CRS 313°	Rwy Ldg TDZE Apt Elev	4300 897 897
---------------------------------	------------------------	-----------------------------	---

RNP APCH - GPS.

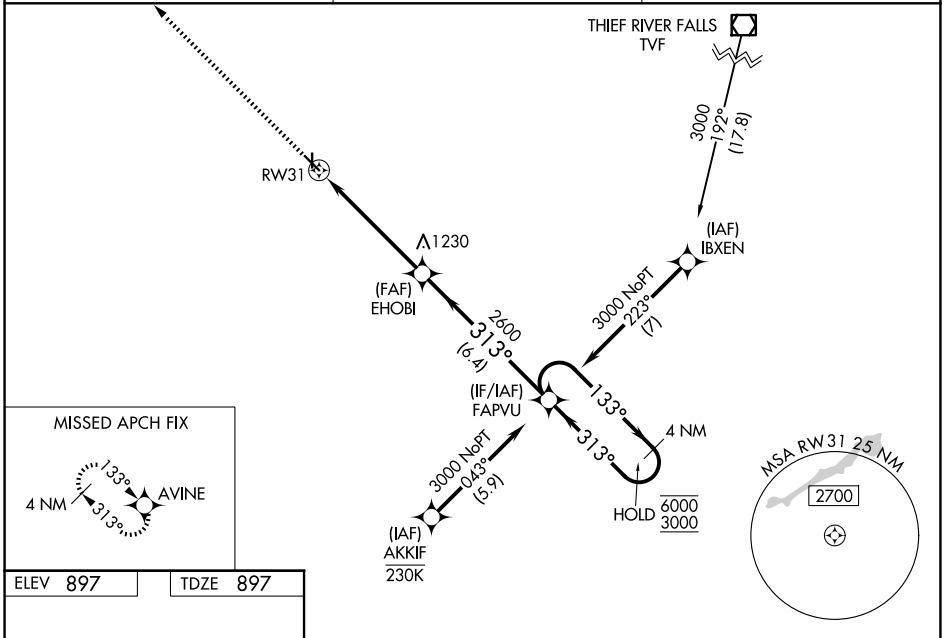
⚠ For uncompensated Baro-VNAV systems, LNAV/VNAV NA below -16°C or above 54°C. Circling NA to Rwy 17 and 35. Baro-VNAV and VDP NA when using GFK altimeter setting. When local altimeter setting not received, use GFK altimeter setting and increase LPV DA to 1160 feet. Increase LNAV/VNAV DA to 1358 feet and all visibilities ¼ SM. Increase all MDAs 80 feet and LNAV and Circling visibility Cat C ¼ SM.

MISSED APPROACH: Climb to 3000 direct AVINE and hold.

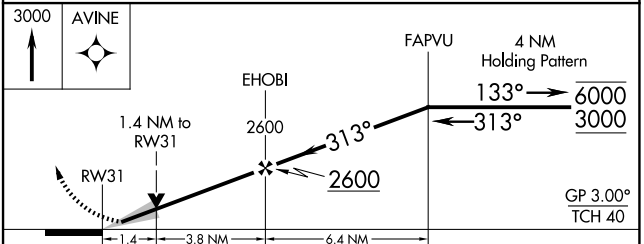
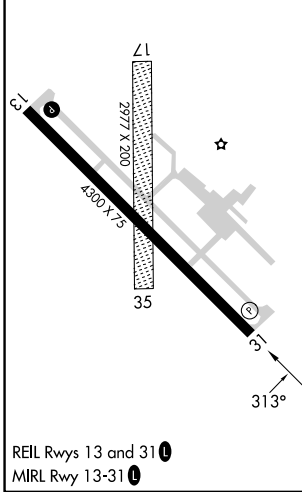
AWOS-3
126.425

GRAND FORKS APP CON*
118.1 318.1

UNICOM
122.7 (CTAF) 0



ELEV 897	TDZE 897
----------	----------



CATEGORY	A	B	C	D
LPV DA	1097-1 200 (200-1)			NA
LNAV/VNAV DA	1295-1½ 398 (400-1½)			NA
LNAV MDA	1380-1	483 (500-1)	1380-1¾ 483 (500-1¾)	NA
CIRCLING	1380-1	483 (500-1)	1480-1½ 583 (600-1½)	NA