

# CHIEF NINE DEPARTURE

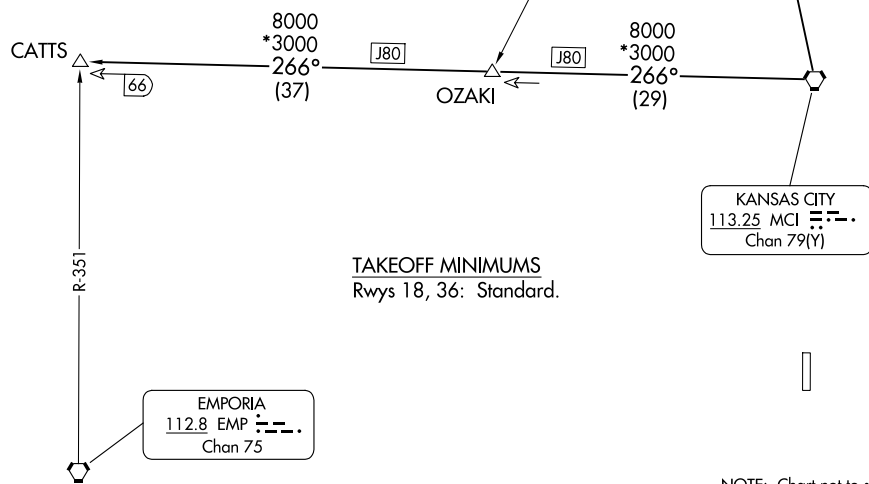
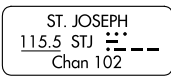
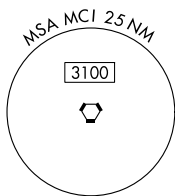
AL-5687 (FAA)

JOHNSON COUNTY EXEC (OJC)  
OLATHE, KANSAS

**TOP ALTITUDE:  
10000**

RADAR required.

KANSAS CITY DEP CON  
118.9 251.075  
ATIS  
119.35



NOTE: Chart not to scale.



## DEPARTURE ROUTE DESCRIPTION

TAKEOFF ALL RUNWAYS: Climb on assigned heading for RADAR vectors to appropriate route. Maintain 10000 or as assigned by ATC, expect filed altitude 10 minutes after departure.

CATTS TRANSITION (CHIEF9.CATTS): From over MCI VORTAC on MCI R-266 to CATTS.

ST. JOSEPH TRANSITION (CHIEF9.STJ): From over MCI VORTAC on MCI R-343 and STJ R-160 to STJ VORTAC.

# CHIEF NINE DEPARTURE