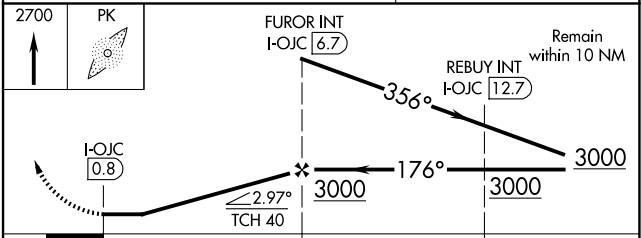
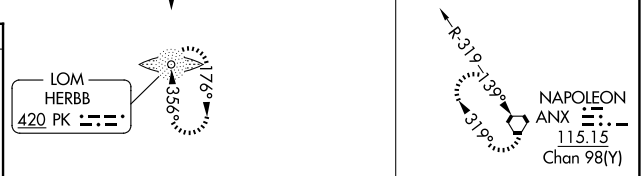
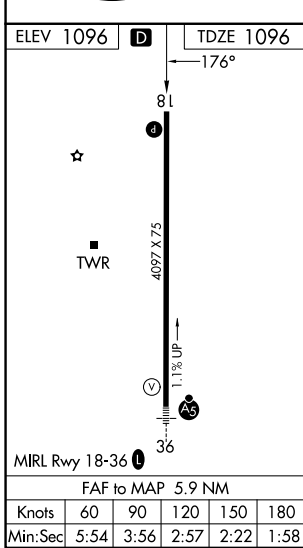
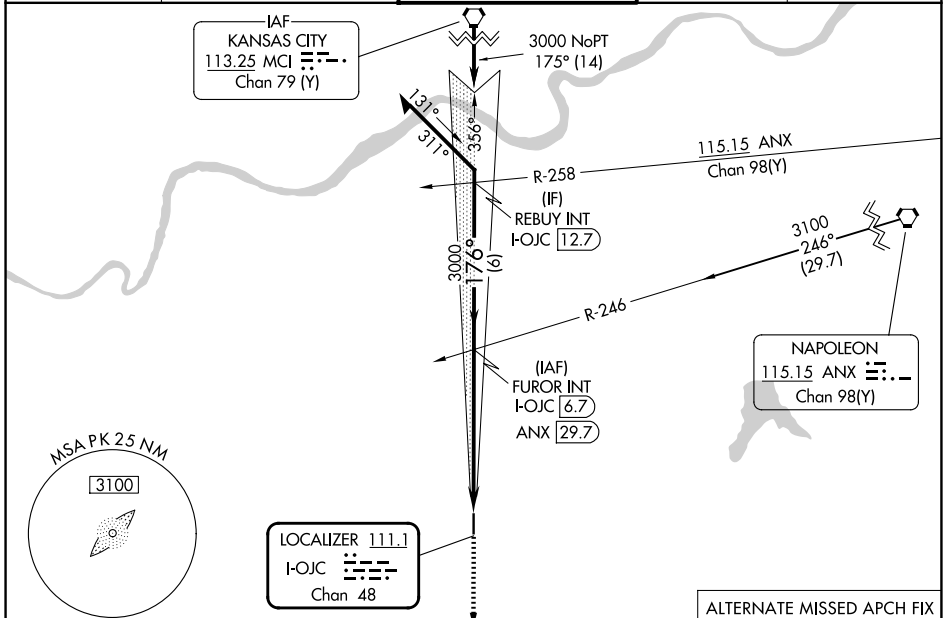


LOC/DME I-OJC <b>111.1</b> Chan <b>48</b>	APP CRS <b>176°</b>	Rwy Ldg TDZE Apt Elev	<b>4097</b> <b>1096</b> <b>1096</b>
---	------------------------	-----------------------------	---

**LOC RWY 18**  
JOHNSON COUNTY EXEC (OJC)

ADF required.		MISSED APPROACH: Climb to 2700 direct HERBB LOM and hold.		
▽ ▲ NA				

ATIS <b>119.35</b>	KANSAS CITY APP CON <b>118.9 251.075</b>	EXECUTIVE TOWER * <b>126.0 (CTAF) 225.4</b>	GND CON <b>121.6</b>	UNICOM <b>122.95</b>
-----------------------	---	--	-------------------------	-------------------------



CATEGORY	A	B	C	D
S-18	1540-1	444 (500-1)	1540-1 3/8 444 (500-1 3/8)	NA
CIRCLING	1620-1	524 (600-1)	1620-1 1/2 524 (600-1 1/2)	NA

NC-2, 16 APR 2026 to 14 MAY 2026

NC-2, 16 APR 2026 to 14 MAY 2026