

WAAS CH 69332 W36A	APP CRS 001°	Rwy Idg TDZE 1734 Apt Elev 1737
---------------------------------	------------------------	---

RNAV (GPS) RWY 36

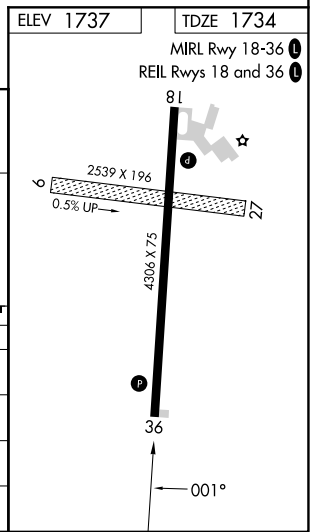
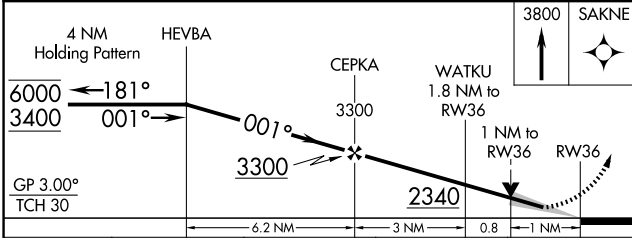
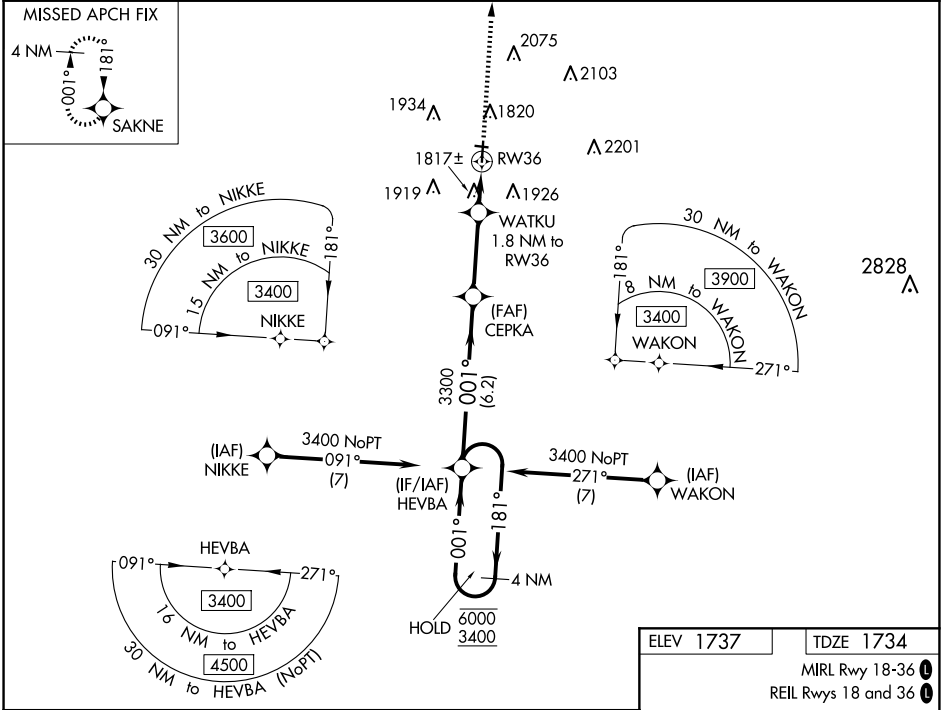
PIPESTONE MUNI (PQN)

RNP APCH-GPS.

⚠ Circling NA to Rwy's 9 and 27. For uncompensated Baro-VNAV systems, LNAV/VNAV NA below -18°C or above 54°C.

MISSED APPROACH: Climb to 3800 direct SAKNE and hold.

AWOS-3PT 118.375	MINNEAPOLIS CENTER 132.05 317.4	GCO 121.725	UNICOM 122.8 (CTAF) 0
----------------------------	---	-----------------------	---------------------------------



CATEGORY	A	B	C	D
LPV DA	1934-1	200 (200-1)		NA
LNAV/ VNAV DA	1984-1	250 (300-1)		NA
LNAV MDA	2080-1	346 (400-1)		NA
C CIRCLING	2200-1 463 (500-1)	2280-1 543 (600-1)	2280-1½ 543 (600-1½)	NA

NC-1, 16 APR 2026 to 14 MAY 2026

NC-1, 16 APR 2026 to 14 MAY 2026