

WAAS CH 45618 W11A	APP CRS 113°	Rwy Idg 6200 TDZE 2976 Apt Elev 3004
----------------------------------------	------------------------	-----------------------------------------------------------------

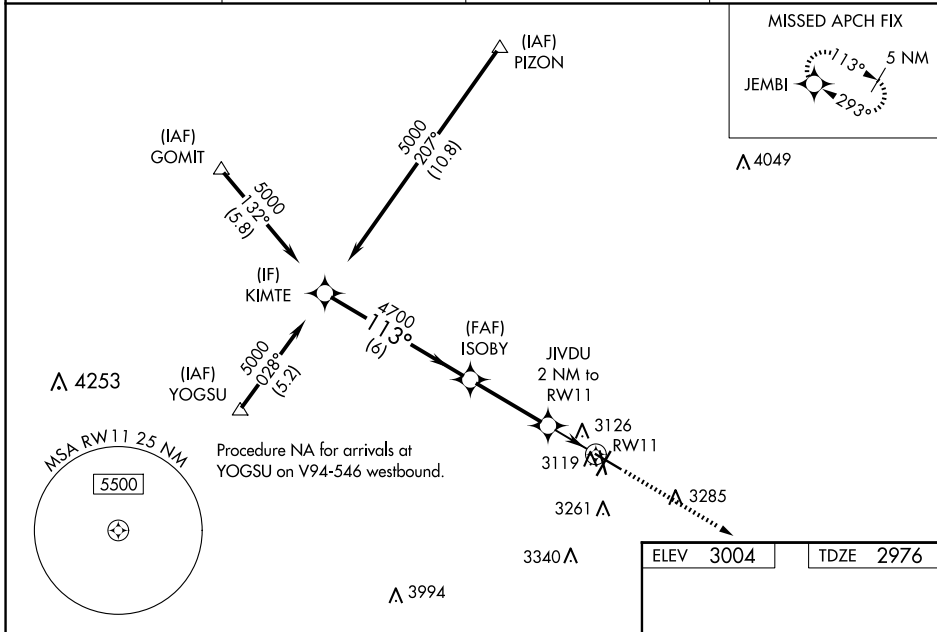
RNAV (GPS) RWY 11

ODESSA-SCHLEMEYER FLD (ODO)

⚠ Circling to Rwy 16 and 20 NA at night. For uncompensated Baro-VNAV systems, LNAV/VNAV NA below -20°C (-4°F) or above 54°C (130°F). DME/DME RNP-0.3 NA. Circling NA S of Rws 2 and 34. When local altimeter setting not received use Midland Intl Air and Space Port altimeter setting and increase all DA 41 feet and all MDA 60 feet and increase LNAV/VNAV all Cats visibility 1/8 mile, LNAV Cat C and D and Circling Cat C visibility 1/4 mile. VDP NA with Midland Intl Air and Space Port altimeter setting. Baro-VNAV NA when using Midland Intl Air and Space Port altimeter setting.

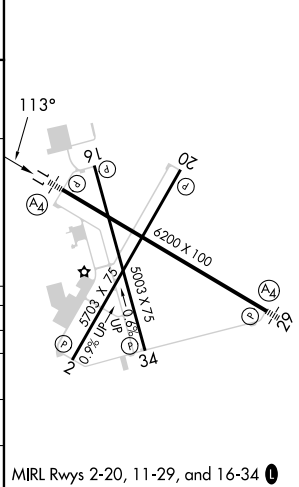
MALS MISSED APPROACH: Climb to 5000 direct JEMBI and hold.

ASOS 119.275	MIDLAND APP CON * 124.6 256.875	CLNC DEL 121.7	UNICOM 123.0 (CTAF)
------------------------	-------------------------------------------	--------------------------	-------------------------------



	KIMTE	ISOBY	JIVDU 2 NM to RW11	5000	JEMBI
	5000	4700	4700		
	GP 3.00° TCH 40	113°	*1.2 NM to RW11	*LNAV only	
			*3640		
	6 NM	3.2 NM	0.8	1.2	
CATEGORY	A	B	C	D	
LPV DA		3176-3/4	200 (200-3/4)		
LNAV/VNAV DA		3347-1 1/4	371 (400-1 1/4)		
LNAV MDA	3380-1	404 (400-1)	3380-1 1/8	404 (400-1 1/8)	
CIRCLING	3460-1	456 (500-1)	3600-1 1/2 596 (600-1 1/2)	3600-2 596 (600-2)	

ELEV	3004	TDZE	2976
------	------	------	------



SC-3, 16 APR 2026 to 14 MAY 2026

SC-3, 16 APR 2026 to 14 MAY 2026