


WAAS CH 49115 W36A	APP CRS 001°	Rwy Ldg TDZE Apt Elev	5150 1627 1630
--	------------------------	-----------------------------	---

RNAV (GPS) RWY 36

LAKELAND/NOBLE F LEE MEML FLD (A.R.V)

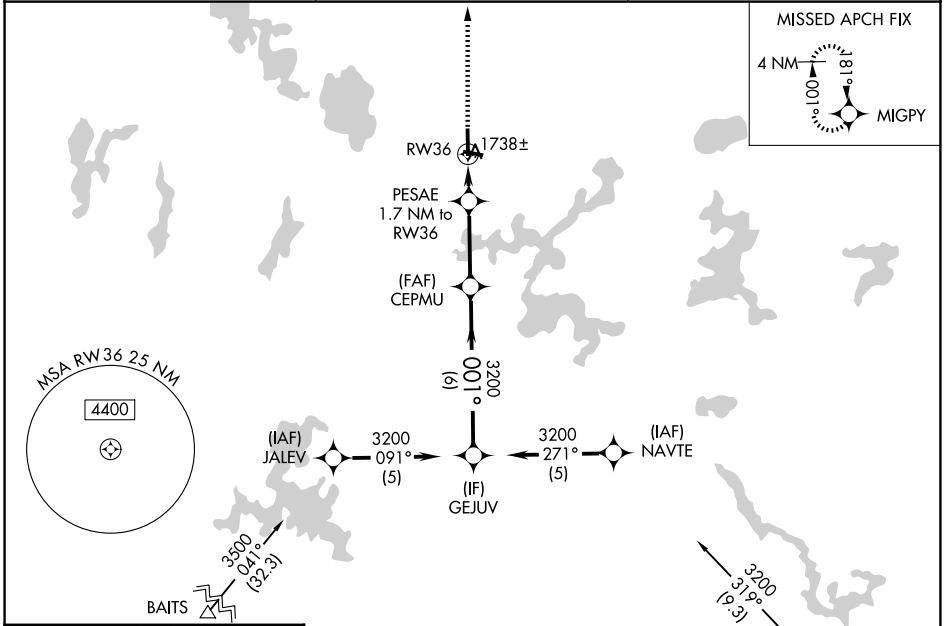
RNP APCH.


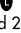

⚠ Circling Rwy 10, 28 NA at night. Rwy 36 helicopter visibility reduction below ¾ SM NA. Inop table does not apply. For uncompensated Baro-VNAV systems, LNAV/VNAV NA below -18°C or above 54°C.

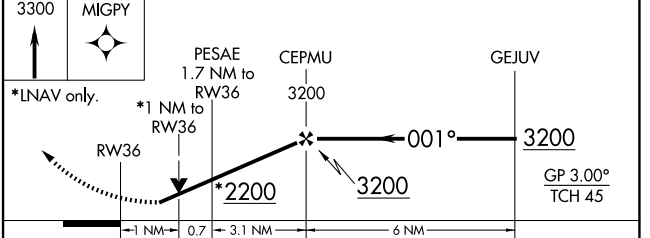
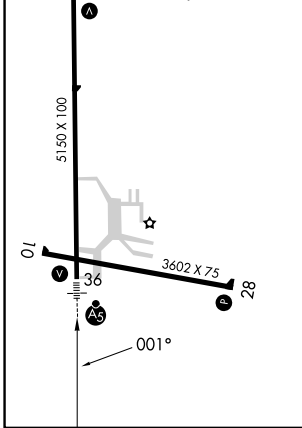
MALSR 

MISSED APPROACH: Climb to 3300 direct MIGPY and hold.

AWOS-3 121.125	MINNEAPOLIS CENTER 133.65 281.5	UNICOM 122.7 (CTAF) 
--------------------------	---	---



ELEV 1630	TDZE 1627
MIRL Rwy 10-28 	
HIRL Rwy 18-36 	
REIL Rws 18 and 28 	



CATEGORY	A	B	C	D
LPV DA		1948-1	321 (400-1)	
LNAV/VNAV DA		1999-1	372 (400-1)	
LNAV MDA		2000-1	373 (400-1)	
CIRCLING	2100-1 470 (500-1)	2200-1 570 (600-1)	2200-1½ 570 (600-1½)	2220-2 590 (600-2)

EC-3, 16 APR 2026 to 14 MAY 2026

EC-3, 16 APR 2026 to 14 MAY 2026