

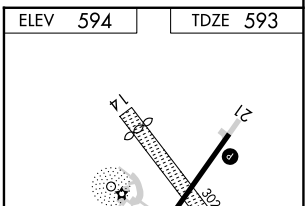
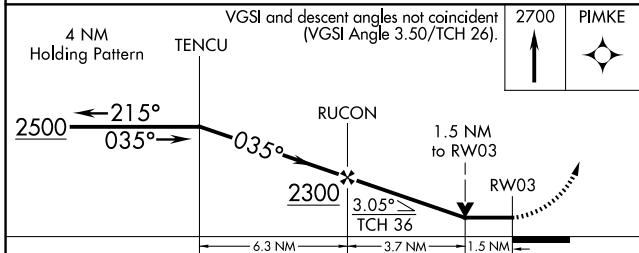
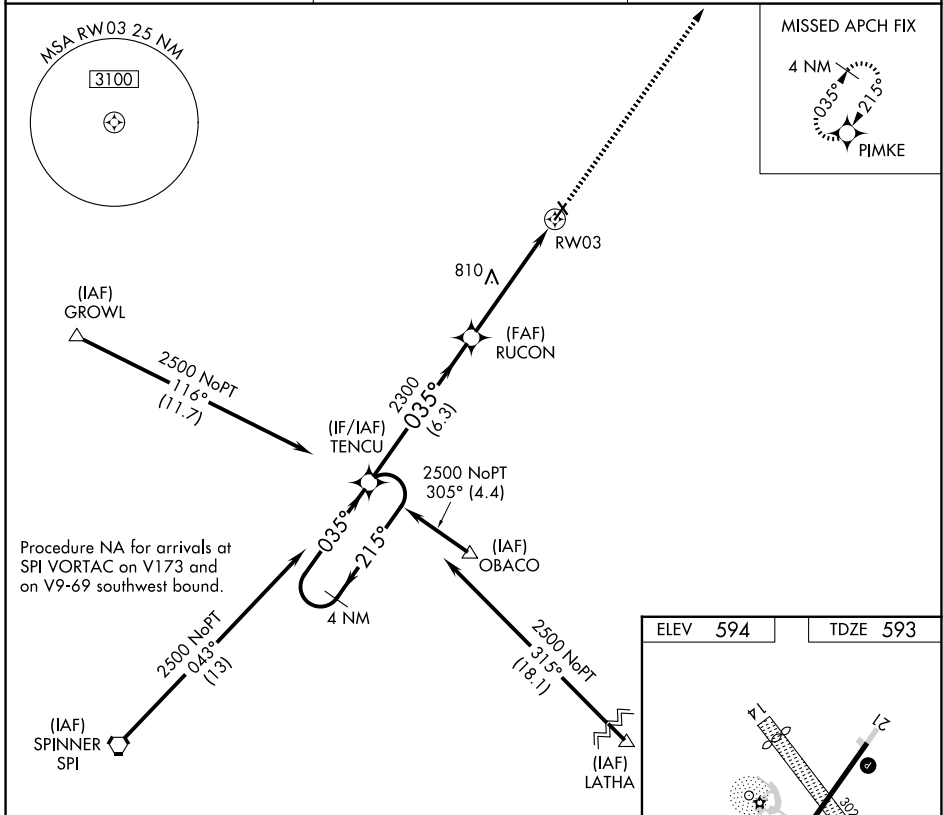
APP CRS	Rwy Ldg	4000
035°	TDZE	593
	Apf Elev	594

RNAV (GPS) RWY 3

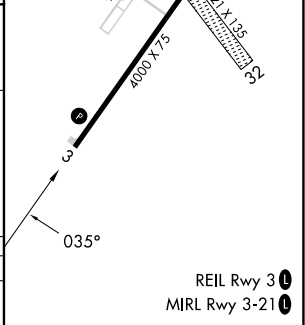
LOGAN COUNTY (AAA)

RNP APCH.	MISSED APPROACH: Climb to 2700 direct PIMKE and hold.
<p>▼ If local altimeter setting not received, use Springfield, IL altimeter setting and increase all MDAs 60 feet. VDP NA with Springfield, IL altimeter setting. Rwy 3 helicopter visibility reduction below $\frac{3}{4}$ SM NA.</p> <p>▲</p>	

AWOS-3 118.775	SAINT LOUIS APP CON 126.15 323.0	UNICOM 122.8 (CTAF) 0
--------------------------	--	---------------------------------



CATEGORY	A	B	C	D
LNAV MDA	1120-1	527 (600-1)	1120-1½ 527 (600-1½)	1120-1¾ 527 (600-1¾)



EC-3, 16 APR 2026 to 14 MAY 2026

EC-3, 16 APR 2026 to 14 MAY 2026