

RNAV (GPS) RWY 18

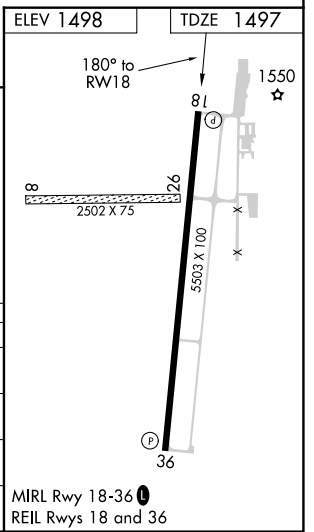
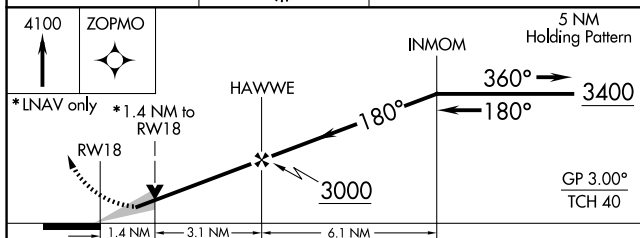
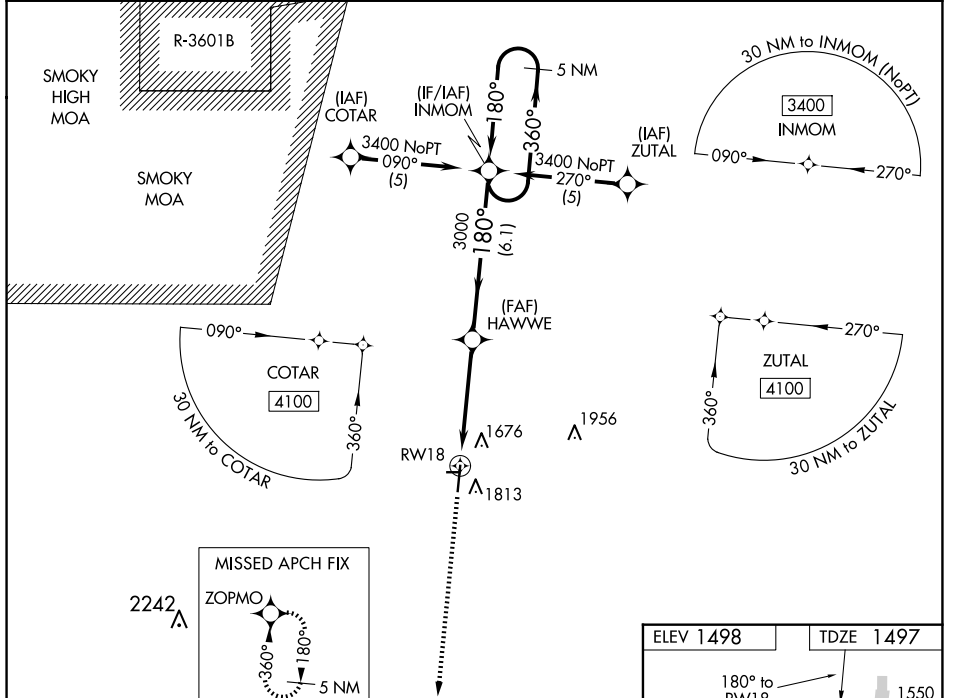
MC PHERSON (MPR)

WAAS CH 99505 W18A	APP CRS 180°	Rwy Idg 5503 TDZE 1497 Apt Elev 1498
--	------------------------	---

▼ When local altimeter setting not received, use Salina altimeter setting: increase LPV DA to 1917 feet, LNAV/VNAV DA to 2120 feet and all visibilities $\frac{3}{8}$ mile; increase all MDA 100 feet and visibility Cat C $\frac{3}{8}$ mile. For uncompensated Baro-VNAV systems, LNAV/VNAV NA below -17°C (2°F) or above 54°C (130°F). Baro-VNAV and VDP NA when using Salina altimeter setting. DME/DME RNP-0.3 NA. Circling NA to Rwy 8 and 26.

▲ NA MISSED APPROACH: Climb to 4100 direct ZOPMO and hold.

AWOS-3P 119.025	WICHITA APP CON 125.5 306.2	UNICOM 122.8 (CTAF) 0
---------------------------	---------------------------------------	---------------------------------



CATEGORY	A	B	C	D
LPV DA	1826-1 $\frac{1}{8}$	329 (400-1 $\frac{1}{8}$)		NA
LNAV/ VNAV DA	2029-1 $\frac{7}{8}$	532 (600-1 $\frac{7}{8}$)		NA
LNAV MDA	1980-1	483 (500-1)	1980-1 $\frac{3}{8}$ 483 (500-1 $\frac{3}{8}$)	NA
CIRCLING	2120-1	622 (700-1)	2120-1 $\frac{3}{4}$ 622 (700-1 $\frac{3}{4}$)	NA

NC-2, 16 APR 2026 to 14 MAY 2026

NC-2, 16 APR 2026 to 14 MAY 2026