

VOR/DME CZI 117.3 Chan 120	APP CRS 319°	Rwy Ldg 6143 TDZE 4940 Apt Elev 4970
--	------------------------	---

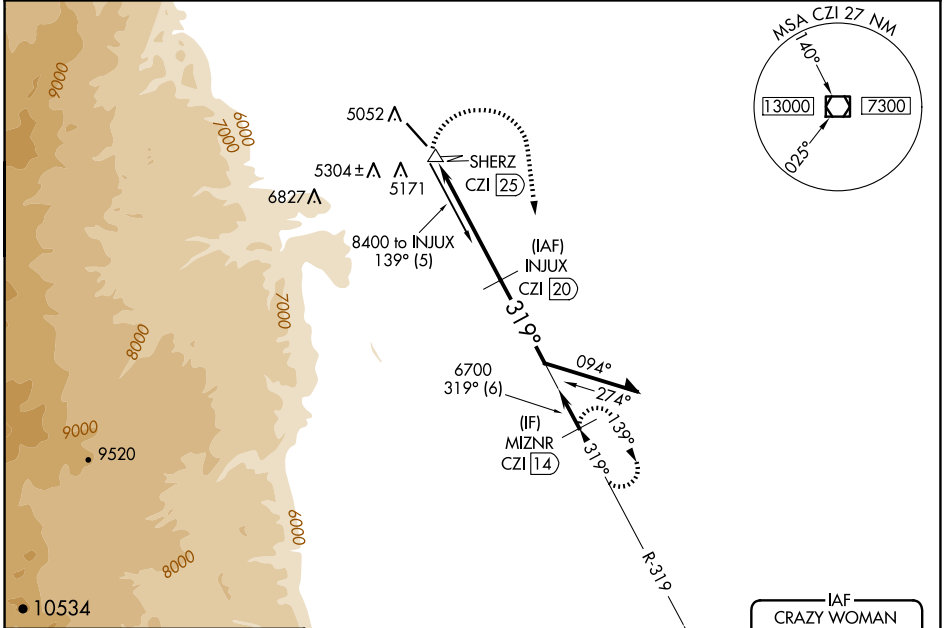
VOR/DME RWY 31

JOHNSON COUNTY (BYG)

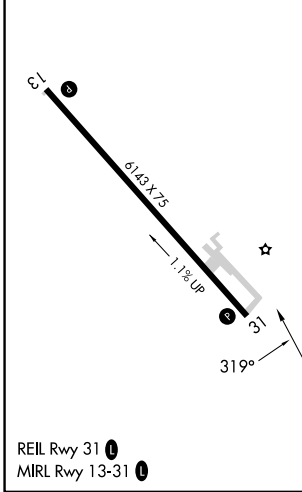
⚠ Visibility reduction by helicopters NA. If local altimeter setting not received, use Sheridan altimeter setting and increase all MDAs 600 feet. When VGSI inoperative, procedure NA at night. Circling NA southwest of Rwy 13-31.

MISSED APPROACH: Climbing right turn to 7600 via heading 160° and CZI VOR/DME R-319 to MIZNR/14 DME and hold.

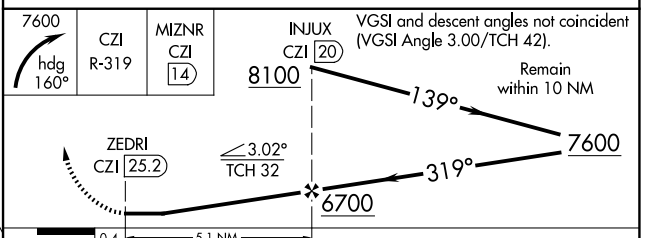
ASOS 135.425	SALT LAKE CENTER 127.75 351.9	UNICOM 122.8 (CTAF)
------------------------	---	-------------------------------



ELEV 4970	TDZE 4940
-----------	-----------



Procedure NA for arrivals at CZI VOR/DME via V247 southbound.



CATEGORY	A	B	C	D
S-31	5680-1 740 (800-1)	5680-1¼ 740 (800-1¼)	5680-2¼ 740 (800-2¼)	5680-2½ 740 (800-2½)
C CIRCLING	5680-1 710 (800-1)	5680-1¼ 710 (800-1¼)	5680-2¼ 710 (800-2¼)	5680-2½ 710 (800-2½)

NW-1, 16 APR 2026 to 14 MAY 2026

NW-1, 16 APR 2026 to 14 MAY 2026