

| | | |
|-------------|----------|-------------|
| APP CRS | Rwy Ldg | 6000 |
| 235° | TDZE | 681 |
| | Apt Elev | 681 |

RNAV (GPS) RWY 24

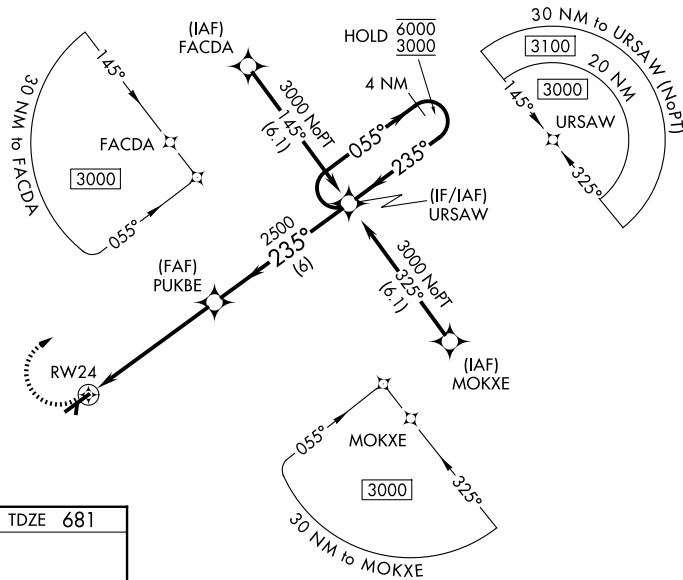
MAURY COUNTY RGNL (MRC)

RNP APCH - GPS.

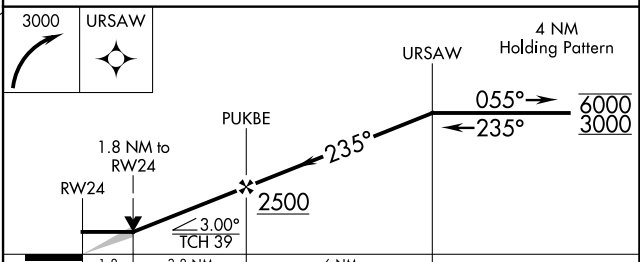
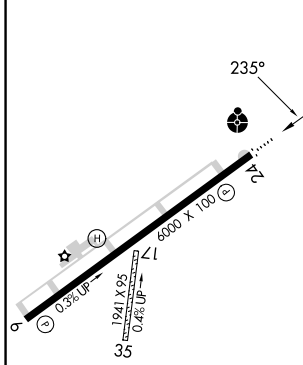
⚠ Inp table does not apply to LNAV Cats C and D. VDP NA when using BNA altimeter setting. Circling NA to Rwy 17 and 35. When local altimeter setting not received, use BNA altimeter setting and increase all MDAs 120 feet and LNAV visibility Cat C/D 3/8 SM, and Circling visibility Cat C 1/2 SM.

ODALS **⚠** MISSED APPROACH: Climbing right turn to 3000 direct URSAW and hold.

| | | |
|--------------------------|--|---------------------------------|
| AWOS-3 128.625 | MEMPHIS CENTER 125.85 379.25 | UNICOM 122.8 (CTAF) ① |
|--------------------------|--|---------------------------------|



| | | |
|----------|----------|----------|
| ELEV 681 | D | TDZE 681 |
|----------|----------|----------|



| CATEGORY | A | B | C | D |
|----------|-----------------------|-----------------------|-----------------------|------------------------|
| LNAV MDA | 1300-3/4 | 619 (700-3/4) | 1300-15/8 | 619 (700-15/8) |
| CIRCLING | 1320-1 639 (700-1) | 1360-1 679 (700-1) | 1400-2 719 (800-2) | 1620-3 939 (1000-3) |

MIRL Rwy 6-24
REIL Rwy 6
REIL Rwy 24 ①

SE-1, 16 APR 2026 to 14 MAY 2026

SE-1, 16 APR 2026 to 14 MAY 2026