

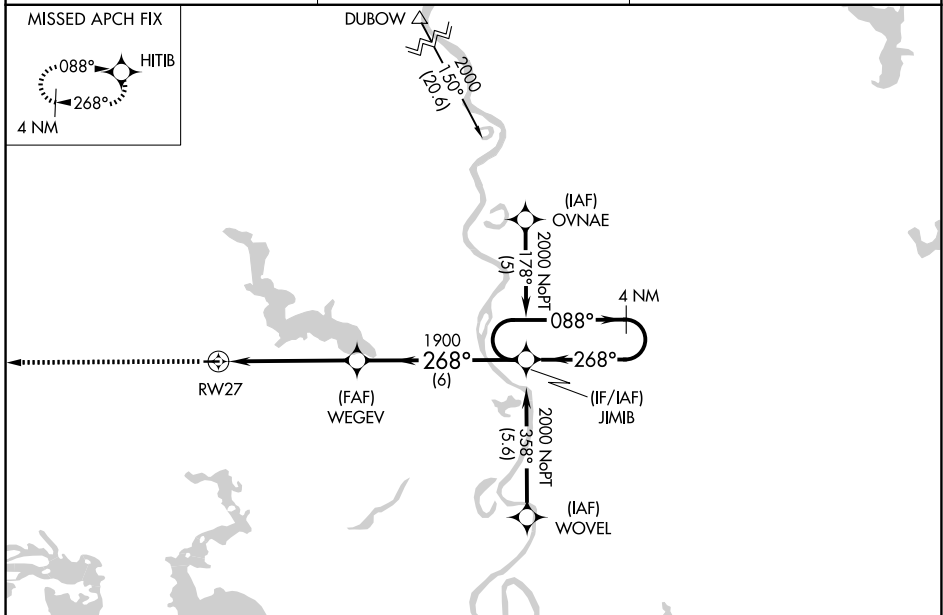
APP CRS	Rwy Ldg	<b>2998</b>
<b>268°</b>	TDZE	<b>260</b>
	Apr Elev	<b>260</b>

# RNAV (GPS) RWY 27

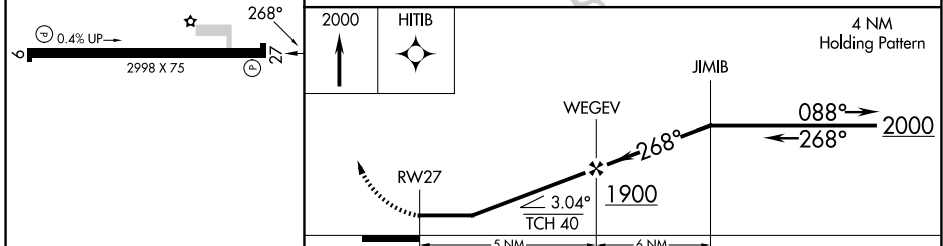
VIVIAN (3F4)

RNP APCH.	MISSED APPROACH: Climb to 2000 direct HITB and hold.
▼ Use Shreveport Rgnl altimeter setting; when not received, use Shreveport Downtown altimeter setting. Procedure NA at night. Rwy 27 helicopter visibility reduction below 1 SM NA.	

SHREVEPORT APP CON <b>119.9 335.55</b>	GCO <b>135.075</b>	UNICOM <b>122.8 (CTAF) 0</b>
---	-----------------------	---------------------------------



ELEV 260	TDZE 260
----------	----------



MIRL Rwy 9-27 0				
REIL Rwy 9 0				
REIL Rwy 27				
CATEGORY	A	B	C	D
LNAV MDA	860-1	600 (600-1)	860-1¾ 600 (600-1¾)	NA

SC-4, 16 APR 2026 to 14 MAY 2026

SC-4, 16 APR 2026 to 14 MAY 2026