

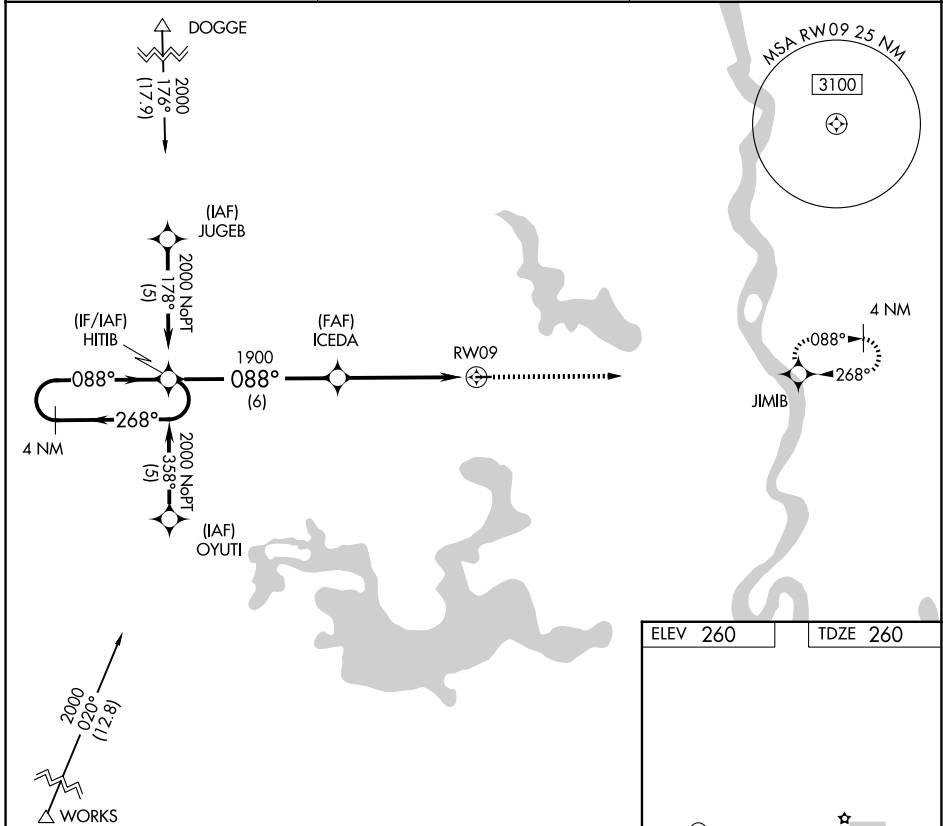
APP CRS	Rwy Ldg	2998
088°	TDZE	260
	Apt Elev	260

RNAV (GPS) RWY 9

VIVIAN (3F4)

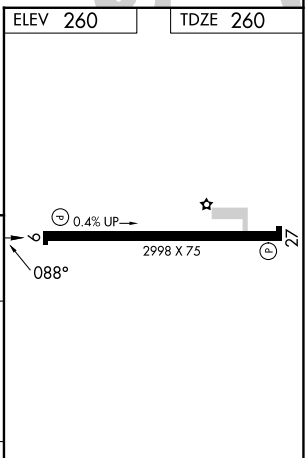
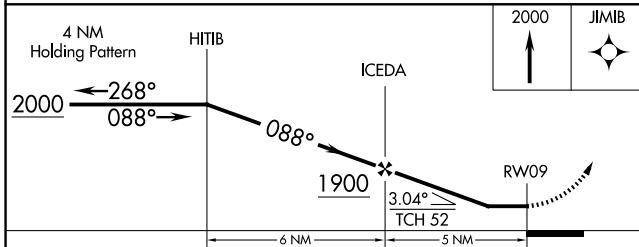
RNP APCH.	MISSED APPROACH: Climb to 2000 direct JIMB and hold.
<p>▼ Use Shreveport Rgnl altimeter setting; when not received, use Shreveport Downtown altimeter setting. Procedure NA at night. Rwy 9 helicopter visibility reduction below 1 SM NA.</p> <p>▲ NA</p>	

SHREVEPORT APP CON 119.9 335.55	GCO 135.075	UNICOM 122.8 (CTAF) 0
---	-----------------------	---------------------------------



SC-4, 16 APR 2026 to 14 MAY 2026

SC-4, 16 APR 2026 to 14 MAY 2026



CATEGORY	A	B	C	D
LNAV MDA	860-1	600 (600-1)	860-1 ³ / ₄ 600 (600-1 ³ / ₄)	NA

MIRL Rwy 9-27 0
REIL Rwy 9 0
REIL Rwy 27