

RNAV 1 - GPS.
RADAR required.

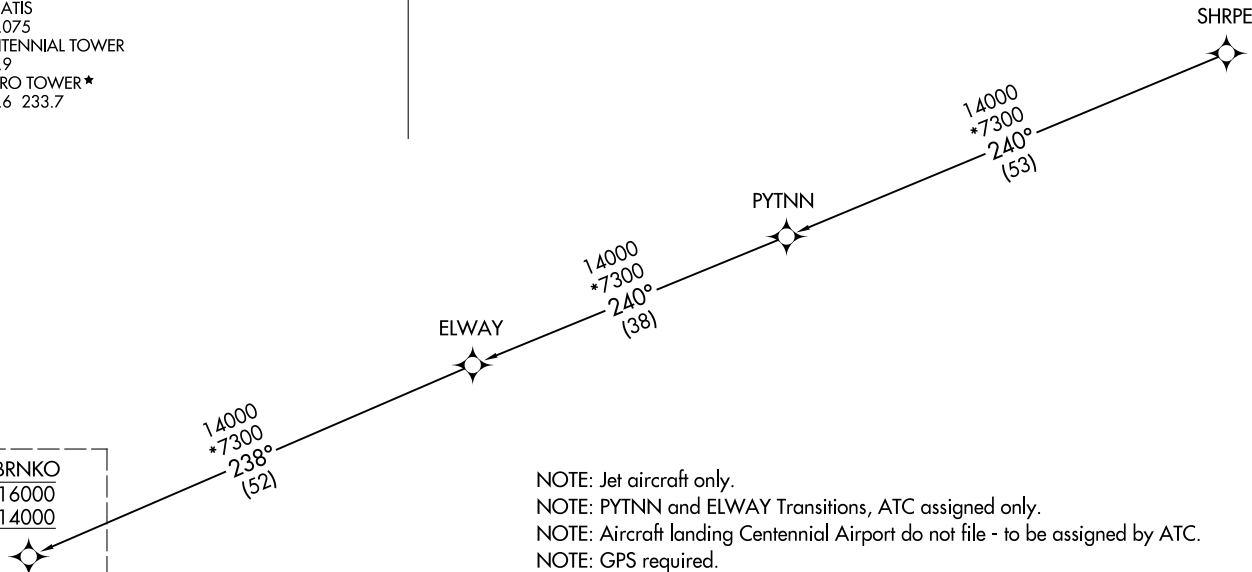
(BRNKO.BRNKO4) 25107
AL-5715 (FAA)
DENVER, COLORADO

BRNKO FOUR ARRIVAL (RNAV) Transition Routes
(BRNKO.BRNKO4) 17APR25
DENVER, COLORADO

DENVER CENTER
133.4 377.175
DENVER APP CON
127.05 363.25
APA ATIS
120.3
BJC ATIS
126.25
FNL ATIS
135.075
CENTENNIAL TOWER
118.9
METRO TOWER ★
118.6 233.7



BRNKO
16000
14000
See following page
for arrival routes.



NOTE: Jet aircraft only.
NOTE: PYTNN and ELWAY Transitions, ATC assigned only.
NOTE: Aircraft landing Centennial Airport do not file - to be assigned by ATC.
NOTE: GPS required.

ELWAY TRANSITION (ELWAY.BRNKO4)
PYTNN TRANSITION (PYTNN.BRNKO4)
SHRPE TRANSITION (SHRPE.BRNKO4)

NOTE: Chart not to scale.

(CONTINUED ON FOLLOWING PAGE)

(BRNKO.BRNKO4) 25107

AL-5715 (FAA)

BRNKO FOUR ARRIVAL (RNAV) Arrival Routes

DENVER, COLORADO

DENVER CENTER
133.4 377.175
DENVER APP CON
127.05 363.25
APA ATIS
120.3
BJC ATIS
126.25
FNL ATIS
135.075
CENTENNIAL TOWER
118.9
METRO TOWER*
118.6 233.7

RNAV 1 - GPS.
RADAR required.

BRNKO
16000
14000

ORRNG
9000
Ldg FNL and GXY

BLTZZ
12000 250K

PICKK
14000

BWLIN
10000

NORTHERN
COLORADO
RGNL

GREELEY-WELD COUNTY

REDZN
10000

VANCE
BRAND

HBALL
9000

Ldg LMO

PYDRT
9000

Ldg BJC

KAYOO

WOLTS

ROCKY
MOUNTAIN
METRO

AAYES
9000

Ldg APA

LOWRE

NOTE: Jet aircraft only.
NOTE: PYTNN and ELWAY Transitions, ATC assigned only.
NOTE: Aircraft landing Centennial Airport do not file - to be assigned by ATC.
NOTE: GPS required.

NOTE: Chart not to scale.

 CENTENNIAL

(CONTINUED ON FOLLOWING PAGE)

BRNKO FOUR ARRIVAL (RNAV) Arrival Routes

DENVER, COLORADO

(BRNKO.BRNKO4) 17APR25

SW-1, 16 APR 2026 to 14 MAY 2026

SW-1, 16 APR 2026 to 14 MAY 2026

ARRIVAL ROUTE DESCRIPTION

LANDING APA: From BRNKO on track 247° to cross PICKK at or below 14000, then on track 247° to cross BLTZZ at 12000 and at or below 250K, then on track 247° to cross BWLIN at 10000, then on track 189° to cross REDZN at 10000, then on track 176° to cross PYDRT at 9000, then on track 176° to cross AAYES at 9000, then on track 150°. Expect RADAR vectors to final approach course.

LANDING BJC: From BRNKO on track 247° to cross PICKK at or below 14000, then on track 247° to cross BLTZZ at 12000 and at or below 250K, then on track 247° to cross BWLIN at 10000, then on track 189° to cross REDZN at 10000, then on track 176° to cross PYDRT at 9000. Expect RNAV (GPS) RWY 12L approach.

LANDING FNL/GXY: From BRNKO on track 247° to cross PICKK at or below 14000, then on track 247° to cross BLTZZ at 12000 and at or below 250K, then on track 247° to cross ORRNG at 9000, then on track 247°. Expect RADAR vectors to final approach course.

LANDING LMO: From BRNKO on track 247° to cross PICKK at or below 14000, then on track 247° to cross BLTZZ at 12000 and at or below 250K, then on track 247° to cross BWLIN at 10000, then on track 189° to cross REDZN at 10000, then on track 176° to cross HBALL at 9000, then on track 176°. Expect RADAR vectors to final approach course.

LOST COMMUNICATIONS

LANDING APA: From AAYES proceed to LOWRE and proceed on the RNAV (GPS) RWY 17L approach.

LANDING BJC: From PYDRT proceed on the RNAV (GPS) RWY 12L approach.

LANDING LMO: From HBALL proceed to KAYOO then to WOLTS and proceed on the RNAV (GPS) RWY 29 approach.

LANDING FNL/GXY: Proceed to GLL VOR/DME, and proceed on the approach.

SW-1, 16 APR 2026 to 14 MAY 2026

SW-1, 16 APR 2026 to 14 MAY 2026