

(DUNNN.DUNNN6) 17AR25

DUNNN SIX ARRIVAL (RNAV) Transition Routes

DENVER, COLORADO

See following page for Arrival Routes

DUNNN
FL220
FL190



139°

14000
*8100
302°
(24)

14000
*8200
319°
(24)

12 NM

XPAIN

079°

14000
*8100
259°
(24)

MORSN
FL300

FL180
*8100
260°
(61)

FRAAY

126°

LAYLA

17000
*8200
309°
(45)

CAARS



RNAV 1 - DME/DME/IRU or GPS.
RADAR required.

- DENVER CENTER 133.4 377.175
- SPRINGS APP CON 124.0 257.875
- DENVER APP CON 128.45 251.075
- APA ATIS 120.3
- BJC ATIS 126.25
- CENTENNIAL TOWER 118.9
- METRO TOWER* 118.6 233.7

NOTE: Jet aircraft only.
 NOTE: Expect runway assignment from DENVER TRACON upon initial contact.
 NOTE: Aircraft landing BJC: ATC assigned only.

NOTE: Chart not to scale.

CAARS TRANSITION (CAARS.DUNNN6)
FRAAY TRANSITION (FRAAY.DUNNN6)

(CONTINUED ON FOLLOWING PAGE)

(DUNNN.DUNNN6) 25107

AL-5715 (FAA) Transition Routes

DENVER, COLORADO

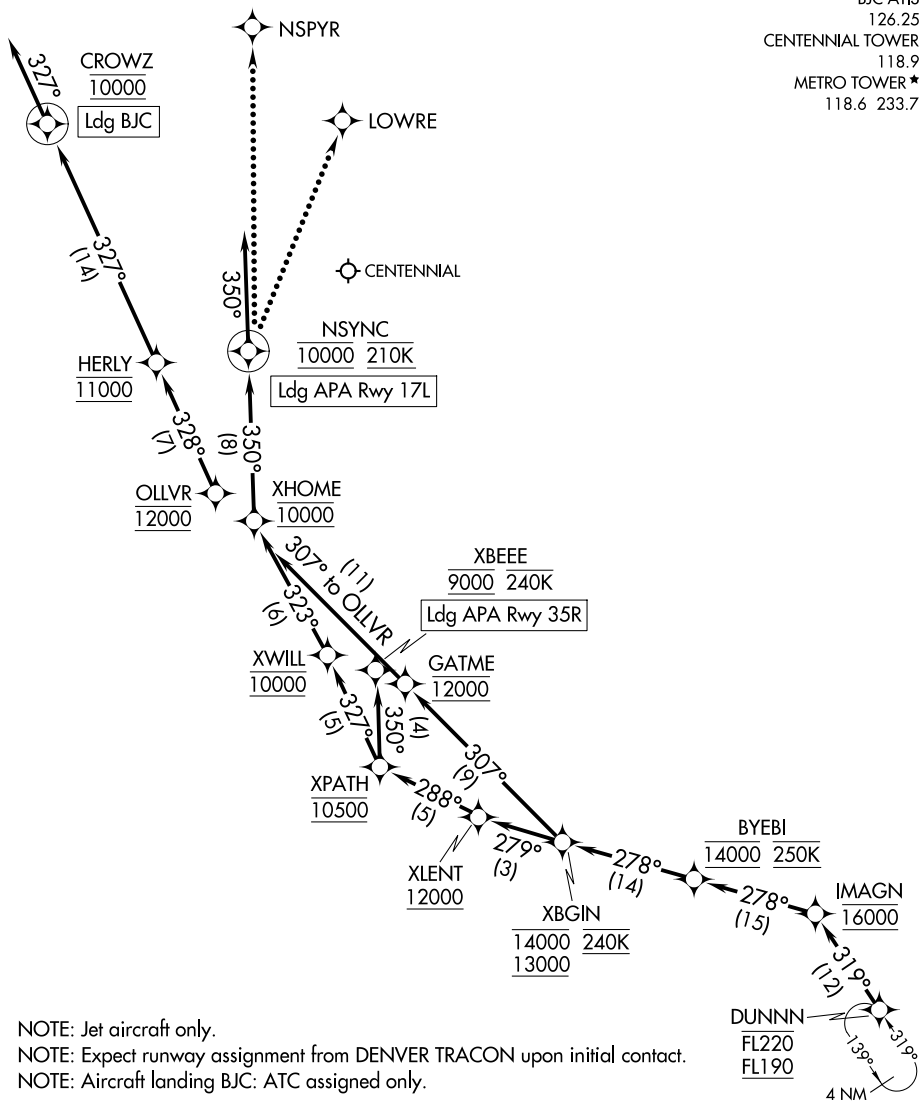
DUNNN SIX ARRIVAL (RNAV) Arrival Routes

DENVER, COLORADO

ROCKY MOUNTAIN METRO

RNAV 1 - DME/DME/IRU or GPS.
RADAR required.

DENVER CENTER
133.4 377.175
SPRINGS APP CON
124.0 257.875
DENVER APP CON
128.45 251.075
APA ATIS
120.3
BJC ATIS
126.25
CENTENNIAL TOWER
118.9
METRO TOWER *
118.6 233.7



NOTE: Jet aircraft only.
NOTE: Expect runway assignment from DENVER TRACON upon initial contact.
NOTE: Aircraft landing BJC: ATC assigned only.

NOTE: Chart not to scale.

(CONTINUED ON FOLLOWING PAGE)

DUNNN SIX ARRIVAL (RNAV) Arrival Routes

DENVER, COLORADO

SW-1, 16 APR 2026 to 14 MAY 2026

SW-1, 16 APR 2026 to 14 MAY 2026

ARRIVAL ROUTE DESCRIPTION

APA: From DUNNN on track 319° to cross IMAGN at 16000, then on track 278° to cross BYEBI at 14000 and at 250K.

LANDING APA RUNWAY 17L: From BYEBI on track 278° to cross XBGIN between 13000 and 14000 and at 240K, then on track 279° to cross XLENT at or above 12000, then on track 288° to cross XPATH at 10500, then on track 327° to cross XWILL at 10000, then on track 323° to cross XHOME at 10000, then on track 350° to cross NSYNC at 10000 and at 210K, then on track 350°. Expect RADAR vectors to final approach course.

LANDING APA RUNWAY 35R: From BYEBI on track 278° to cross XBGIN between 13000 and 14000 and at 240K, then on track 279° to cross XLENT at or above 12000, then on track 288° to cross XPATH at 10500, then on track 350° to cross XBEEE at 9000 and at or below 240K. Expect ILS or RNAV RWY 35 approach.

LANDING BJC: From DUNNN on track 319° to cross IMAGN at 16000, then on track 278° to cross BYEBI at 14000 and at 250K, then on track 278° to cross XBGIN between 13000 and 14000 and at 240K, then on track 307° to cross GATME at 12000, then on track 307° to cross OLLVR at 12000 then on track 328° to cross HERLY at 11000, then on track 327° to cross CROWZ at 10000, then on track 327°. Expect RADAR vectors to final approach course.

LOST COMMUNICATIONS

LANDING CENTENNIAL:

From over NSYNC- proceed to LOWRE and proceed on the RNAV (GPS) RWY 17L approach.

From over XBEEE- execute the RNAV (GPS) RWY 35R approach.

Non-GPS equipped aircraft- execute the ILS or LOC RWY 35R approach.

LANDING ROCKY MOUNTAIN METRO:

From over NSYNC- proceed to NSPYR and proceed on the ILS or LOC RWY 30R approach.

SW-1, 16 APR 2026 to 14 MAY 2026

SW-1, 16 APR 2026 to 14 MAY 2026