

DENVER, COLORADO

AL-5715 (FAA)

25219

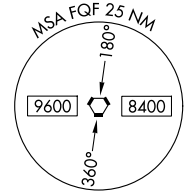
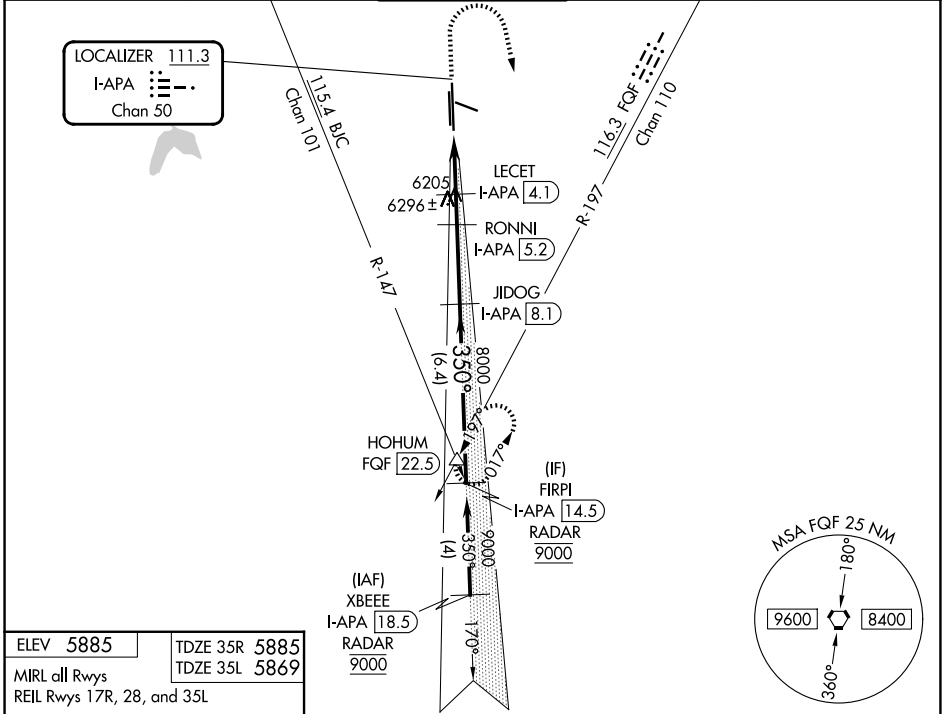
LOC/DME I-APA 111.3 Chan 50	APP CRS 350°	Rwy Ldg 35R 10001 TDZE 5885 Apt Elev 5885	35L 7001 5869 5885
--	------------------------	--	--

ILS or LOC RWY 35R

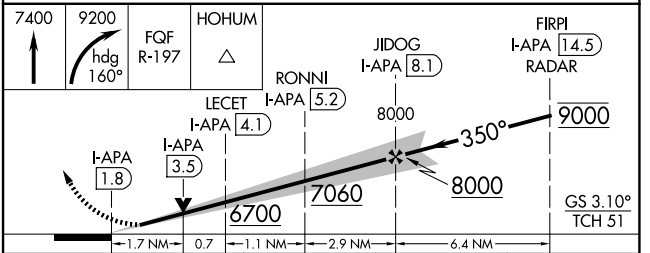
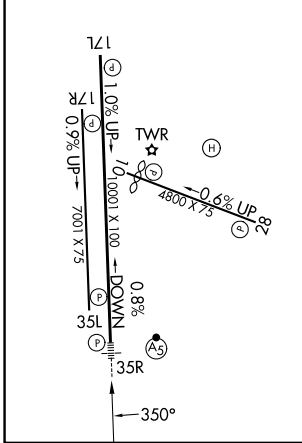
CENTENNIAL (APA)

DME required for LOC only. RADAR required for procedure entry.		MALSR Rwy 35R	MISSED APPROACH: Climb to 7400 then climbing right turn to 9200 on heading 160° and FQF VORTAC R-197 to HOHUM INT/FQF 22.5 DME and hold.
▼	Rwy 35L helicopter visibility reduction below 1 SM NA. For inop ALS, increase S-LOC 35R Cat C/D visibility to 1½ SM. Sidestep and Circling Rwy 35L NA at night.		

ATIS 120.3	DENVER APP CON 132.75 269.3	CENTENNIAL TOWER 118.9	GND CON 121.8	CLNC DEL 128.6
----------------------	---------------------------------------	----------------------------------	-------------------------	--------------------------



ELEV 5885	TDZE 35R 5885
MIRL all Rwys	TDZE 35L 5869
REIL Rwys 17R, 28, and 35L	



CATEGORY	A	B	C	D
S-ILS 35R	6085-½ 200 (200-½)			
S-LOC 35R	6460-½	575 (600-½)	6460-1¼	575 (600-1¼)
SIDESTEP 35L	6460-1	591 (600-1)	6460-1½	6460-2
CIRCLING	6460-1	6540-1	6740-2½	6760-2¾
	575 (600-1)	655 (700-1)	855 (900-2½)	875 (900-2¾)

DENVER, COLORADO
Amdt 11B 23FEB23

39°34'N-104°51'W

CENTENNIAL (APA)

ILS or LOC RWY 35R

SW-1, 16 APR 2026 to 14 MAY 2026

SW-1, 16 APR 2026 to 14 MAY 2026