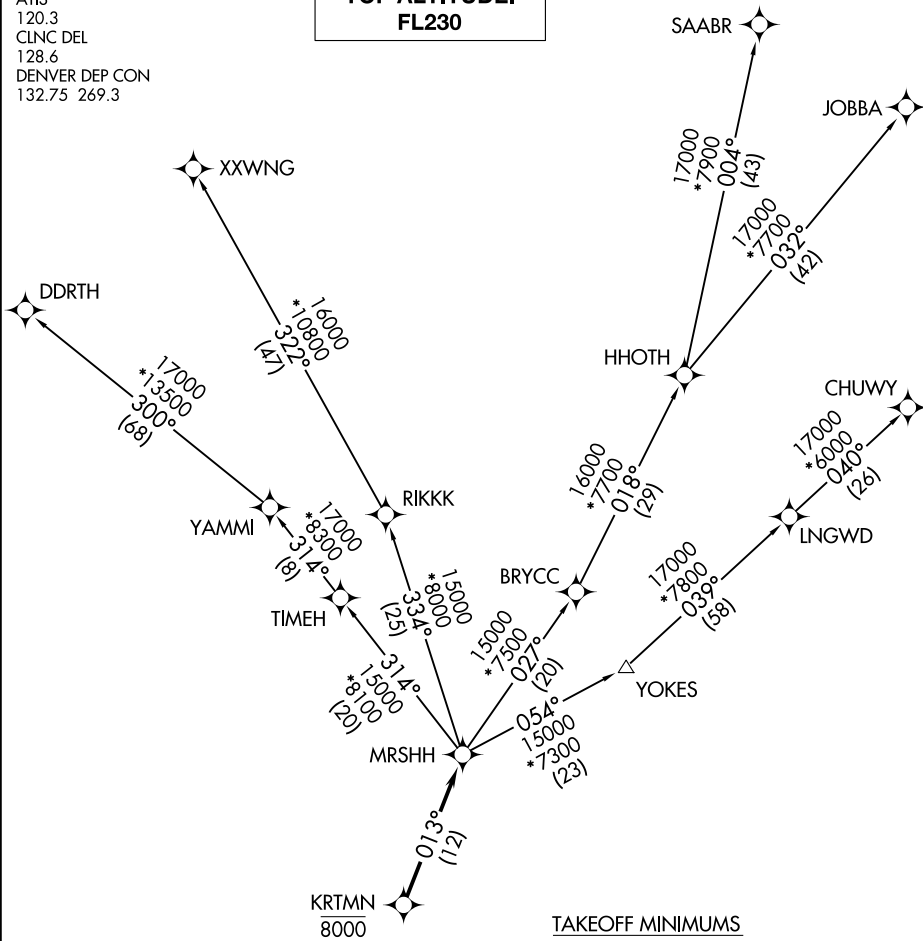


ATIS
120.3
CLNC DEL
128.6
DENVER DEP CON
132.75 269.3

**TOP ALTITUDE:
FL230**



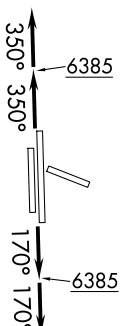
SW-1, 16 APR 2026 to 14 MAY 2026

SW-1, 16 APR 2026 to 14 MAY 2026

TAKEOFF MINIMUMS

- Rwys 10, 28: NA.
- Rwy 17L: Standard with minimum climb of 257' per NM to 8000.
- Rwy 17R: Standard with minimum climb of 372' per NM to 8000.
- Rwys 35L/R: Standard.

- NOTE: DME/DME/IRU or GPS required.
- NOTE: RNAV 1.
- NOTE: Turbojets only.
- NOTE: RADAR required.



NOTE: Chart not to scale.

(NARRATIVE ON FOLLOWING PAGE)



DEPARTURE ROUTE DESCRIPTION

TAKEOFF RUNWAYS 17L/R: Climb on heading 170° to 6385, then on heading 170° or as assigned by ATC. Thence. . . .

TAKEOFF RUNWAYS 35L/R: Climb on heading 350° to 6385, then on heading 350° or as assigned by ATC. Thence. . . .

. . . .expect RADAR vectors to cross KRTMN at 8000 then on track 013° to MRS HH, then on (transition) maintain FL230 or filed lower altitude. Expect higher filed altitude ten minutes after departure.

CHUWY TRANSITION (MRS HH2.CHUWY)

DDRTH TRANSITION (MRS HH2.DDRTH)

JOBBA TRANSITION (MRS HH2.JOBBA)

SAABR TRANSITION (MRS HH2.SAABR)

XXWNG TRANSITION (MRS HH2.XXWNG)

SW-1, 16 APR 2026 to 14 MAY 2026

SW-1, 16 APR 2026 to 14 MAY 2026