


# PIKES THREE DEPARTURE

AL-5715 (FAA)

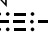
CENTENNIAL (APA)  
DENVER, COLORADO

DENVER DEP CON  
132.75 269.3  
ATIS  
120.3  
CLNC DEL  
128.6

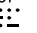
RADAR required.

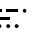
DENVER  
117.9 DEN   
Chan 126

**TOP ALTITUDE:  
ASSIGNED BY ATC**

FALCON  
116.3 FGF   
Chan 110

HUGO  
112.1 HGO   
Chan 58

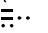
BLACK FOREST  
112.5 BRK   
Chan 72

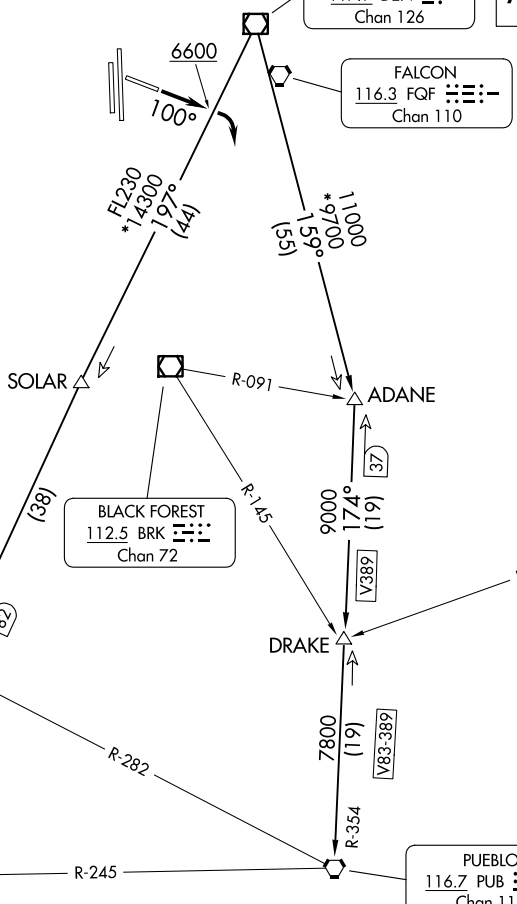
PUEBLO  
116.7 PUB   
Chan 114

MOCA 14300  
for ALAMOSA  
Transition.

TEHEV  
FL230  
\*16600  
182°  
(35)

BINKE  
FL230  
\*14300  
182°  
(41)  
JT3-44

ALAMOSA  
113.9 ALS   
Chan 86



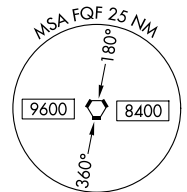
### TAKEOFF MINIMUMS

Rwys 10, 35L/R: Standard.

Rwy 17L: Standard with minimum climb of 255'/NM to 8000.

Rwy 17R: Standard with minimum climb of 372'/NM to 8000.

Rwy 28: Standard with minimum climb of 300'/NM to 8000.



NOTE: Chart not to scale.

(CONTINUED ON FOLLOWING PAGE)

# PIKES THREE DEPARTURE

SW-1, 16 APR 2026 to 14 MAY 2026

SW-1, 16 APR 2026 to 14 MAY 2026



DEPARTURE ROUTE DESCRIPTION

TAKEOFF RUNWAYS 17L/R, 28, 35L/R: Fly assigned heading and altitude for RADAR vectors to assigned route. Expect filed altitude 10 minutes after departure.

TAKEOFF RUNWAY 10: Climb on heading 100° to 6600 before turning right.

LOST COMMUNICATIONS: If no transmissions are received within one minute after departure, maintain assigned heading until 7000, then climb to filed altitude direct to DEN VOR/DME, then on assigned route. If filed altitude is above 10000, cross DEN VOR/DME at or above 11000.

ALAMOSA TRANSITION (PIKES3.ALS): From over DEN VOR/DME on DEN R-197 to TEHEV, then on ALS R-002 to ALS VORTAC.

BINKE TRANSITION (PIKES3.BINKE): From over DEN VOR/DME on DEN R-197 to TEHEV, then on ALS R-002 to BINKE.

PUEBLO TRANSITION (PIKES3.PUB): From over DEN VOR/DME on DEN R-159 to ADANE, then on PUB R-354 to PUB VORTAC.

SW-1, 16 APR 2026 to 14 MAY 2026

SW-1, 16 APR 2026 to 14 MAY 2026