

ROCKIES SEVEN DEPARTURE
(ROCK17.DEN) 12JUN25

DENVER DEP CON
132.75 269.3
ATIS
120.3
CLNC DEL
128.6

RADAR required.

TOP ALTITUDE:
ASSIGNED BY ATC

ROCKIES SEVEN DEPARTURE
25133

AL-5715 (FAA)

CENTENNIAL (A/P A)
DENVER, COLORADO



MEEKER
115.2 EKR
Chan 99

KREMMLING
113.8 RLG
Chan 85

DENVER
117.9 DEN
Chan 126

FALCON
116.3 FGF
Chan 110

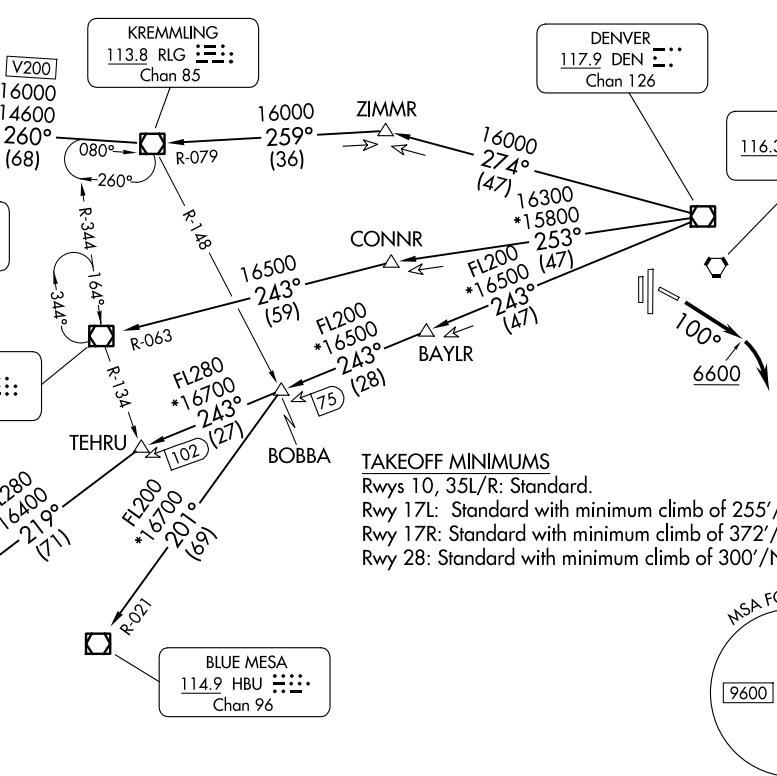
RIFLE
113.35 RIL
Chan 80(Y)

RED TABLE
113.0 DBL
Chan 77

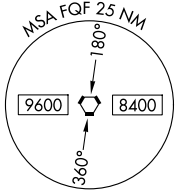
MONTROSE
117.1 MTJ
Chan 118

DOVE CREEK
114.6 DVC
Chan 93

BLUE MESA
114.9 HBU
Chan 96



TAKEOFF MINIMUMS
 Rws 10, 35L/R: Standard.
 Rwy 17L: Standard with minimum climb of 255'/NM to 8000.
 Rwy 17R: Standard with minimum climb of 372'/NM to 8000.
 Rwy 28: Standard with minimum climb of 300'/NM to 8000.



(CONTINUED ON FOLLOWING PAGE)

NOTE: Chart not to scale.

DENVER, COLORADO
CENTENNIAL (A/P A)



DEPARTURE ROUTE DESCRIPTION

TAKEOFF RUNWAYS 17L/R, 28, 35L/R: Fly assigned heading and altitude for RADAR vectors to assigned route. Expect filed altitude 10 minutes after departure.

TAKEOFF RUNWAY 10: Climb heading 100° to 6600 before turning right.

LOST COMMUNICATIONS: If no transmissions are received within one minute after departure, maintain assigned heading until 7000, then climb to filed altitude direct to DEN VOR/DME, then on assigned route. If filed altitude is above 10000, cross DEN VOR/DME at or above 11000.

BLUE MESA TRANSITION (ROCKI7.HBU): From over DEN VOR/DME on DEN R-243 and HBU R-021 to HBU VOR/DME.

DOVE CREEK TRANSITION (ROCKI7.DVC): From over DEN VOR/DME on DEN R-243 and MTJ R-039 to MTJ VOR/DME, then on MTJ R-218 and DVC R-035 to DVC VORTAC.

KREMMLING TRANSITION (ROCKI7.RLG): From over DEN VOR/DME on DEN R-274 and RLG R-079 to RLG VOR/DME.

MEEKER TRANSITION (ROCKI7.EKR): From over DEN VOR/DME on DEN R-274 and RLG R-079 to RLG VOR/DME, then on RLG R-260 and EKR R-084 to EKR VOR/DME.

MONTROSE TRANSITION (ROCKI7.MTJ): From over DEN VOR/DME on DEN R-243 and MTJ R-039 to MTJ VOR/DME.

RED TABLE TRANSITION (ROCKI7.DBL): From over DEN VOR/DME on DEN R-253 and DBL R-063 to DBL VOR/DME.

SW-1, 16 APR 2026 to 14 MAY 2026

SW-1, 16 APR 2026 to 14 MAY 2026