

YELLOWSTONE FIVE DEPARTURE  
(YELLOW5.DEN) 12JUN25

YELLOWSTONE FIVE DEPARTURE  
(YELLOW5.DEN) 25163

AL-5715 (FAA)

CENTENNIAL (A/P A)  
DENVER, COLORADO

DENVER DEP CON  
132.75 269.3  
ATIS  
120.3  
CLNC DEL  
128.6

MEDICINE BOW  
116.85 MBW  
Chan 115(Y)

RAPID CITY  
112.3 RAP  
Chan 70

SCOTTSBLUFF  
112.6 BFF  
Chan 73

CHEYENNE  
113.1 CYS  
Chan 78

LARAMIE  
117.6 LAR  
Chan 123

GILL  
114.2 GLL  
Chan 89

DENVER  
117.9 DEN  
Chan 126

FALCON  
116.3 FQF  
Chan 110

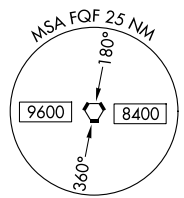
RADAR required.

TOP ALTITUDE:  
ASSIGNED BY ATC



YAMMI  
12000 (For MEDICINE BOW  
Transition only)

MOCA 7900 for SCOTTSBLUFF Transition.



NOTE: Chart not to scale.

TAKEOFF MINIMUMS

- Rwys 10, 35L/R: Standard.
- Rwy 17L: Standard with minimum climb of 255'/NM to 8000.
- Rwy 17R: Standard with minimum climb of 372'/NM to 8000.
- Rwy 28: Standard with minimum climb of 300'/NM to 8000.

(CONTINUED ON FOLLOWING PAGE)

DENVER, COLORADO  
CENTENNIAL (A/P A)



DEPARTURE ROUTE DESCRIPTION

TAKEOFF RUNWAYS 17L/R, 28, 35L/R: Fly assigned heading and altitude or RADAR vectors to assigned route. Expect filed altitude 10 minutes after departure.

TAKEOFF RUNWAY 10: Climb on heading 100° to 6600 before turning right.

LOST COMMUNICATIONS: If no transmissions are received within one minute after departure, maintain assigned heading until 7000, then climb to filed altitude direct to DEN VOR/DME, then on assigned route. If filed altitude is above 10000, cross DEN VOR/DME at or above 11000.

CHEYENNE TRANSITION (YELLOW5.CYS): From over DEN VOR/DME on DEN R-349 and CYS R-163 to CYS VORTAC.

HANKI TRANSITION (YELLOW5.HANKI): From over DEN VOR/DME on DEN R-015 and GLL R-034 to HANKI.

LARAMIE TRANSITION (YELLOW5.LAR): From over DEN VOR/DME on DEN R-334 and LAR R-125 to LAR VOR/DME.

MEDICINE BOW TRANSITION (YELLOW5.MBW): From over DEN VOR/DME on DEN R-334 and MBW R-133 to MBW VOR/DME.

NATTI TRANSITION (YELLOW5.NATTI): From over DEN VOR/DME on DEN R-334 and LAR R-125 to LAR VOR/DME, then on LAR R-273 to NATTI.

RAPID CITY TRANSITION (YELLOW5.RAP): From over DEN VOR/DME on DEN R-359 and GLL R-174 to GLL VOR/DME, then on GLL R-005 and RAP R-186 to RAP VORTAC.

SCOTTSBLUFF TRANSITION (YELLOW5.BFF): From over DEN VOR/DME on DEN R-015 and BFF R-191 to BFF VORTAC.

SW-1, 16 APR 2026 to 14 MAY 2026

SW-1, 16 APR 2026 to 14 MAY 2026