

(ZOMBZ.ZOMBZ6) 25107

AL-5715 (FAA)

ZOMBZ SIX ARRIVAL (RNAV) Transition Routes

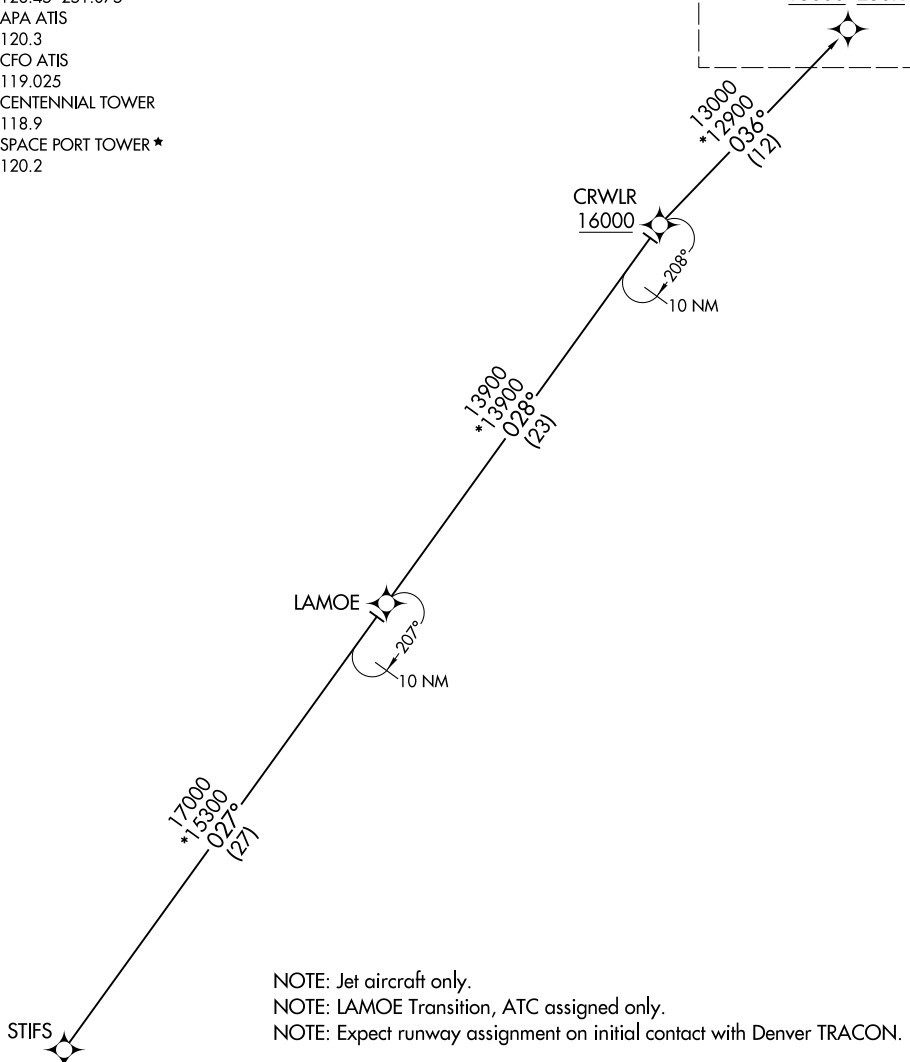
DENVER, COLORADO

DENVER CENTER
 133.4 377.175
 DENVER APP CON
 128.45 251.075
 APA ATIS
 120.3
 CFO ATIS
 119.025
 CENTENNIAL TOWER
 118.9
 SPACE PORT TOWER ★
 120.2

RNAV 1 - DME/DME IRU or GPS.
RADAR required.

See following page for arrival routes

<u>ZOMBZ</u>	
15000	250K



NOTE: Jet aircraft only.
 NOTE: LAMOE Transition, ATC assigned only.
 NOTE: Expect runway assignment on initial contact with Denver TRACON.

NOTE: Chart not to scale.

LAMOE TRANSITION (LAMOE.ZOMBZ6)
STIFS TRANSITION (STIFS.ZOMBZ6)

(CONTINUED ON FOLLOWING PAGE)

ZOMBZ SIX ARRIVAL (RNAV) Transition Routes

DENVER, COLORADO

(ZOMBZ.ZOMBZ6) 17APR25

SW-1, 16 APR 2026 to 14 MAY 2026

SW-1, 16 APR 2026 to 14 MAY 2026

ZOMBZ SIX ARRIVAL (RNAV) Arrival Routes

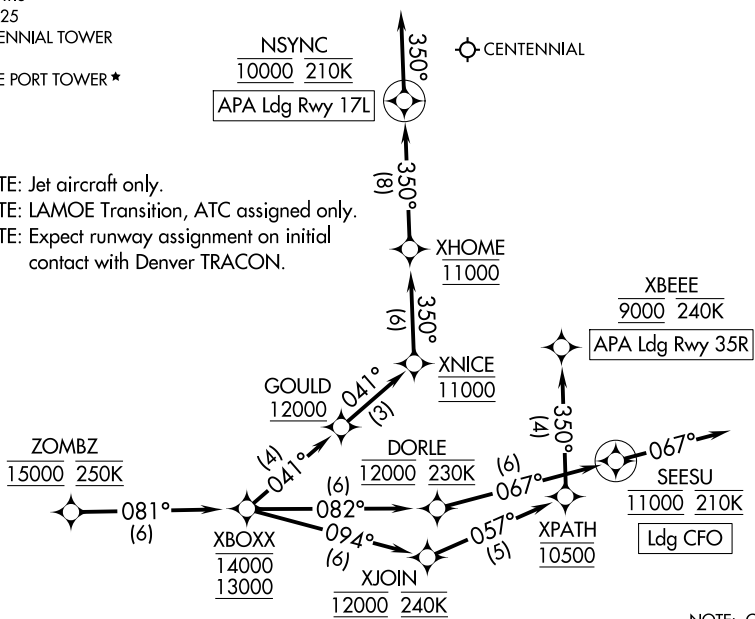
DENVER, COLORADO

DENVER CENTER
133.4 377.175
DENVER APP CON
128.45 251.075
APA ATIS
120.3
CFO ATIS
119.025
CENTENNIAL TOWER
118.9
SPACE PORT TOWER ★
120.2

RNAV 1 - DME/DME IRU or GPS.
RADAR required.

LOWRE
CENTENNIAL
COLORADO AIR AND SPACE PORT
SKIPI

NOTE: Jet aircraft only.
NOTE: LAMOE Transition, ATC assigned only.
NOTE: Expect runway assignment on initial contact with Denver TRACON.



NOTE: Chart not to scale.

ARRIVAL ROUTE DESCRIPTION

LANDING APA RUNWAY 17L: From ZOMBZ on track 081° to cross XBOXX between 13000 and 14000, then on track 041° to cross GOULD at or above 12000, then on track 041° to cross XNICE at 11000, then on track 350° to cross XHOME at 11000, then on track 350° to cross NSYNC at 10000 and at 210K, then on track 350°. Expect RADAR vectors to final approach course.

LANDING APA RUNWAY 35R: From ZOMBZ on track 081° to cross XBOXX between 13000 and 14000, then on track 094° to cross XJOIN at 12000 and at 240K, then on track 057° to cross XPATH at 10500, then on track 350° to cross XBEEB at 9000 and at or below 240K. Expect ILS or RNAV RWY 35R approach.

LANDING CFO: From ZOMBZ on track 081° to cross XBOXX between 13000 and 14000, then on track 082° to cross DORLE at 12000 and at 230K, then on track 067° to cross SEESU at 11000 and at 210K, then on track 067°. Expect RADAR vectors to final approach course.

LOST COMMUNICATIONS

In the event of lost communications prior to runway transition assignment, when APA is landing north, proceed on the ILS RWY 35R approach, when APA is landing south, proceed on the RNAV (GPS) RWY 17L from LOWRE.

LANDING CFO: proceed on the ILS RWY 26 approach from SKIPI.