

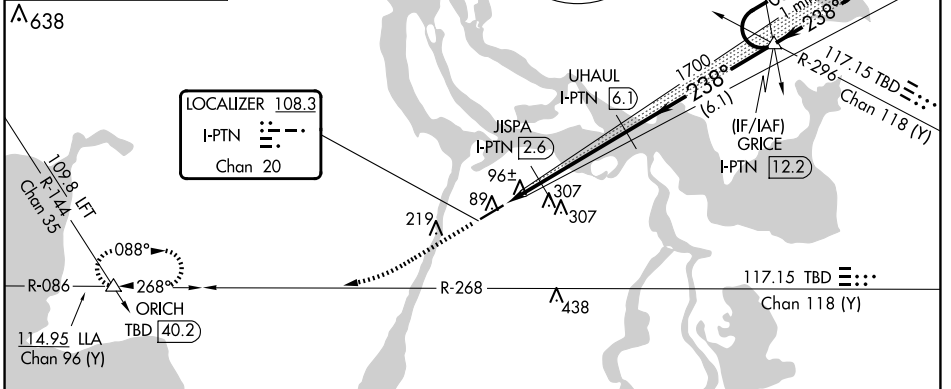
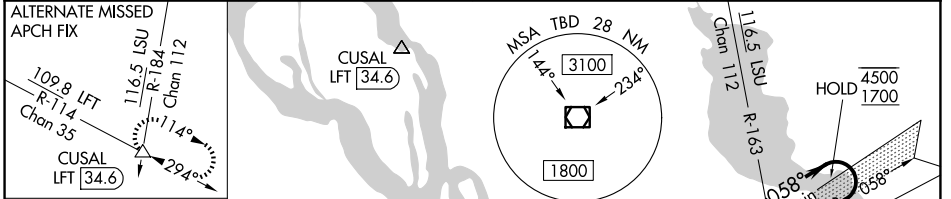
LOC/DME I-PTN <b>108.3</b> Chan <b>20</b>	APP CRS <b>238°</b>	Rwy ldg <b>5399</b> TDZE <b>9</b> Apt Elev <b>9</b>
---	------------------------	---

# ILS or LOC RWY 24

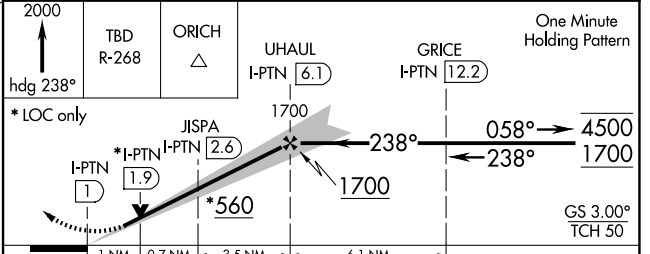
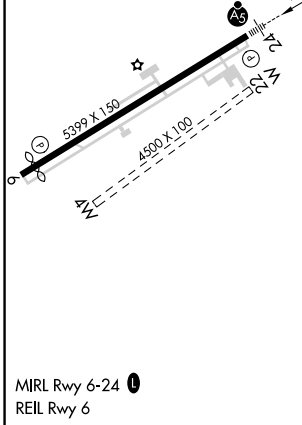
HARRY P WILLIAMS MEML (PTN)

DME required.	MALSR	MISSED APPROACH: Climb to 2000 on heading 238° and TBD VOR/DME R-268 to ORICH INT/ TBD 40.2 DME and hold.
Circling NA to Rwys 4W and 22W. For inop ALS, increase S-LOC 24 Cat C visibility to 1 SM. NA		

AWOS-3PT <b>134.575</b>	NEW ORLEANS APP CON <b>124.3 350.35</b>	CLNC DEL <b>124.3</b>	UNICOM <b>122.8 (CTAF)</b>
----------------------------	--	--------------------------	-------------------------------



ELEV 9	TDZE 9
--------	--------



CATEGORY	A	B	C	D
S-ILS 24	209-1/2		200 (200-1/2)	NA
S-LOC 24	360-1/2	351 (400-1/2)	360-5/8 351 (400-5/8)	NA
CIRCLING	520-1 511 (600-1)	660-1 651 (700-1)	660-1 3/4 651 (700-1 3/4)	NA

SC-4, 16 APR 2026 to 14 MAY 2026

SC-4, 16 APR 2026 to 14 MAY 2026